

Product datasheet for **TA350235**

NCF2 Rabbit Polyclonal Antibody

Product data:

Product Type:	Primary Antibodies
Applications:	IHC, WB
Recommended Dilution:	WB: 200-1000 WB positive control: Human brain malignant glioma tissue IHC: 50-200 Positive control: Human liver cancer Predicted cell location: Cytoplasm
Reactivity:	Human, Mouse
Host:	Rabbit
Isotype:	IgG
Clonality:	Polyclonal
Immunogen:	Fusion protein of human NCF2
Formulation:	pH7.4 PBS, 0.05% NaN ₃ , 40% Glycerol
Concentration:	lot specific
Purification:	Antigen affinity purification
Conjugation:	Unconjugated
Storage:	Store at -20°C as received.
Stability:	Stable for 12 months from date of receipt.
Predicted Protein Size:	60 kDa
Gene Name:	neutrophil cytosolic factor 2
Database Link:	NP_000424 Entrez Gene 17970 Mouse Entrez Gene 4688 Human P19878



[View online »](#)

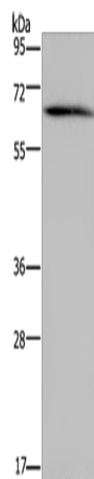
Background: This gene encodes neutrophil cytosolic factor 2, the 67-kilodalton cytosolic subunit of the multi-protein NADPH oxidase complex found in neutrophils. This oxidase produces a burst of superoxide which is delivered to the lumen of the neutrophil phagosome. Mutations in this gene, as well as in other NADPH oxidase subunits, can result in chronic granulomatous disease, a disease that causes recurrent infections by catalase-positive organisms. Alternative splicing results in multiple transcript variants encoding different isoforms.

Synonyms: NCF-2; NOXA2; P67-PHOX; P67PHOX

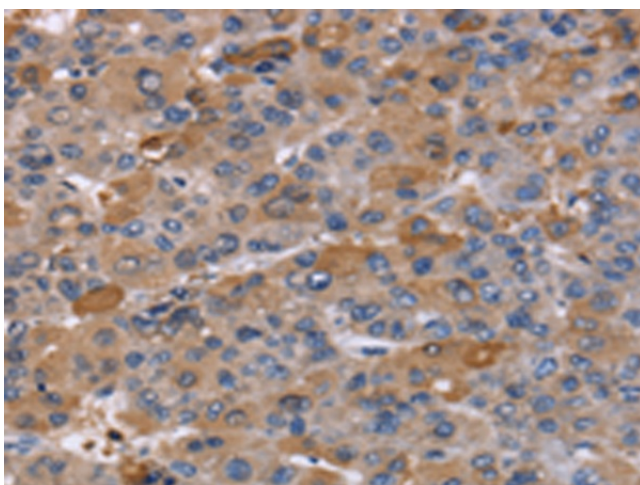
Protein Families: Druggable Genome

Protein Pathways: Leukocyte transendothelial migration

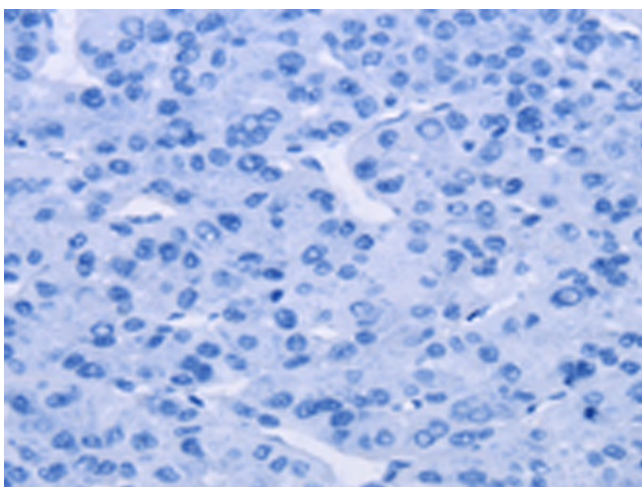
Product images:



Gel: 8%SDS-PAGE
Lysate: 40 µg
Lane: Human brain malignant glioma tissue
Primary antibody: TA350235 (NCF2 Antibody) at dilution 1/200
Secondary antibody: Goat anti rabbit IgG at 1/8000 dilution
Exposure time: 5 seconds



Immunohistochemistry of paraffin-embedded Human liver cancer tissue using TA350235 (NCF2 Antibody) at dilution 1/60 (Original magnification: ×200)



Immunohistochemistry of paraffin-embedded Human liver cancer tissue using TA350235 (NCF2 Antibody) at dilution 1/60, treated with fusion protein. (Original magnification: x200)