

## Product datasheet for **TA350233**

### **NOC2L Rabbit Polyclonal Antibody**

#### **Product data:**

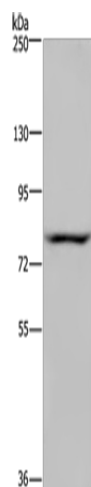
Product Type:	Primary Antibodies
Applications:	IHC, WB
Recommended Dilution:	WB: 200-1000 WB positive control: Hela cells IHC: 25-100 Positive control: Human prostate cancer Predicted cell location: Cytoplasm or Nucleus
Reactivity:	Human, Mouse
Host:	Rabbit
Isotype:	IgG
Clonality:	Polyclonal
Immunogen:	Fusion protein of human NOC2L
Formulation:	pH7.4 PBS, 0.05% NaN <sub>3</sub> , 40% Glycerol
Concentration:	lot specific
Purification:	Antigen affinity purification
Conjugation:	Unconjugated
Storage:	Store at -20°C as received.
Stability:	Stable for 12 months from date of receipt.
Predicted Protein Size:	85 kDa
Gene Name:	NOC2 like nucleolar associated transcriptional repressor
Database Link:	<a href="#">NP_056473</a> <a href="#">Entrez Gene 57741 Mouse</a> <a href="#">Entrez Gene 26155 Human</a> <a href="#">Q9Y3T9</a>
Background:	Histone modification by histone acetyltransferases (HAT) and histone deacetylases (HDAC) can control major aspects of transcriptional regulation. NOC2L represents a novel HDAC-independent inhibitor of histone acetyltransferase (INHAT)
Synonyms:	NET7; NET15; NIR; PPP1R112



[View online »](#)

Protein Families: Stem cell - Pluripotency

### Product images:



Gel: 6%SDS-PAGE

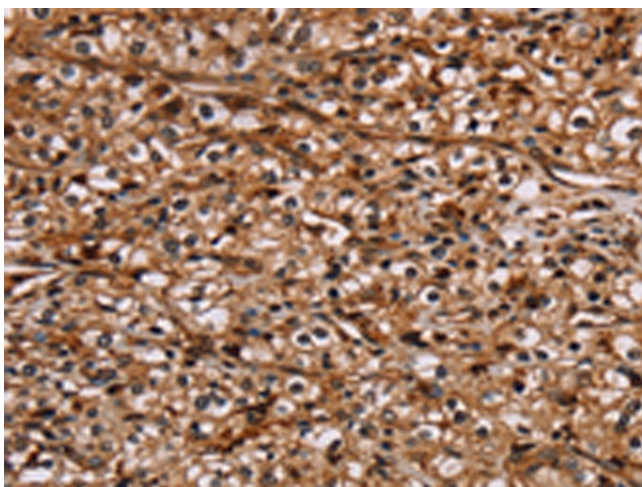
Lysate: 40 µg

Lane: HeLa cells

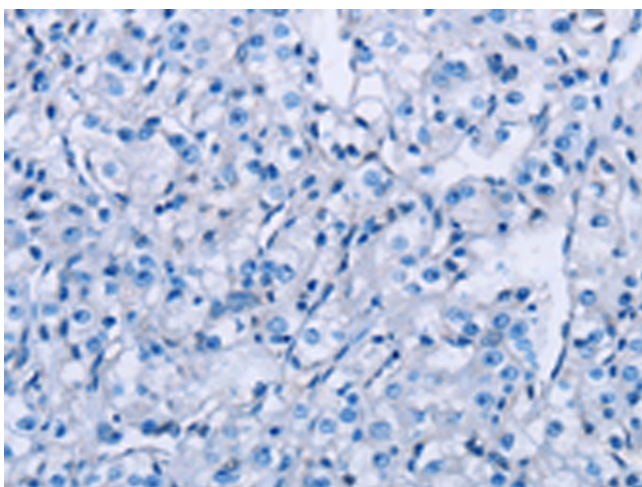
Primary antibody: TA350233 (NOC2L Antibody) at dilution 1/200

Secondary antibody: Goat anti rabbit IgG at 1/8000 dilution

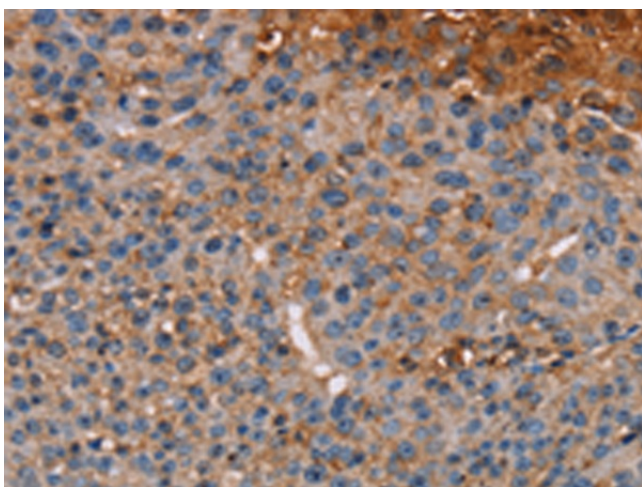
Exposure time: 5 seconds



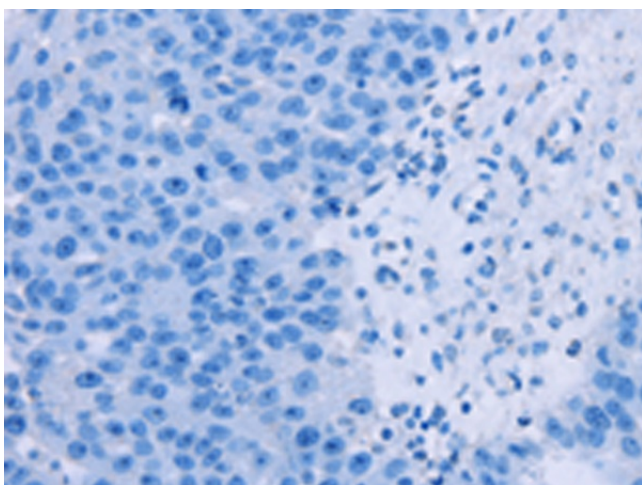
Immunohistochemistry of paraffin-embedded Human prostate cancer tissue using TA350233 (NOC2L Antibody) at dilution 1/20 (Original magnification: ×200)



Immunohistochemistry of paraffin-embedded Human prostate cancer tissue using TA350233 (NOC2L Antibody) at dilution 1/20, treated with fusion protein. (Original magnification: ×200)



Immunohistochemistry of paraffin-embedded Human breast cancer tissue using TA350233 (NOC2L Antibody) at dilution 1/20 (Original magnification: ×200)



Immunohistochemistry of paraffin-embedded Human breast cancer tissue using TA350233 (NOC2L Antibody) at dilution 1/20, treated with fusion protein. (Original magnification: ×200)