

## Product datasheet for **TA350231S**

### **KIRREL2 Rabbit Polyclonal Antibody**

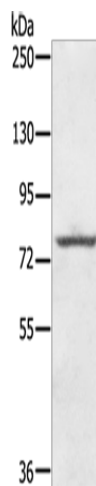
#### **Product data:**

Product Type:	Primary Antibodies
Applications:	WB
Recommended Dilution:	WB: 200-1000 WB positive control: Hela cells
Reactivity:	Human, Mouse
Host:	Rabbit
Isotype:	IgG
Clonality:	Polyclonal
Immunogen:	Fusion protein of human KIRREL2
Formulation:	pH7.4 PBS, 0.05% NaN <sub>3</sub> , 40% Glycerol
Purification:	Antigen affinity purification
Conjugation:	Unconjugated
Storage:	Store at -20°C as received.
Stability:	Stable for 12 months from date of receipt.
Predicted Protein Size:	75 kDa
Gene Name:	kin of IRRE like 2 (Drosophila)
Database Link:	<a href="#">NP_954648</a> <a href="#">Entrez Gene 243911 Mouse</a> <a href="#">Entrez Gene 84063 Human</a> <a href="#">Q6UWL6</a>
Background:	NEPH3 (nephrin-like protein 3), also referred to as NLG1, FILTRIN or KIRREL2 (kin of IRRE like 2), is a 708 amino acid protein that is a member of the immunoglobulin superfamily of cell adhesion molecules. NEPH3 consists of five extracellular Ig-like repeats, a transmembrane domain, several glycosylation sites and a cytoplasmic domain that has a stretch of nine conserved residues. NEPH3 localizes to the interpodocyte filtration slit in the kidney and to the Langerhans islet beta cells in the pancreas. NEPH3 is thought to be involved in the maintenance of the glomerular filtration barrier in the kidney and in pancreas development.
Synonyms:	FILTRIN; NEPH3; NLG1
Protein Families:	Transmembrane



[View online »](#)

## Product images:



Gel: 6%SDS-PAGE

Lysate: 60  $\mu$ g

Lane: HeLa cells

Primary antibody: [TA350231] (KIRREL2 Antibody)  
at dilution 1/400

Secondary antibody: Goat anti rabbit IgG at  
1/8000 dilution

Exposure time: 30 seconds