

Product datasheet for **TA350229S**

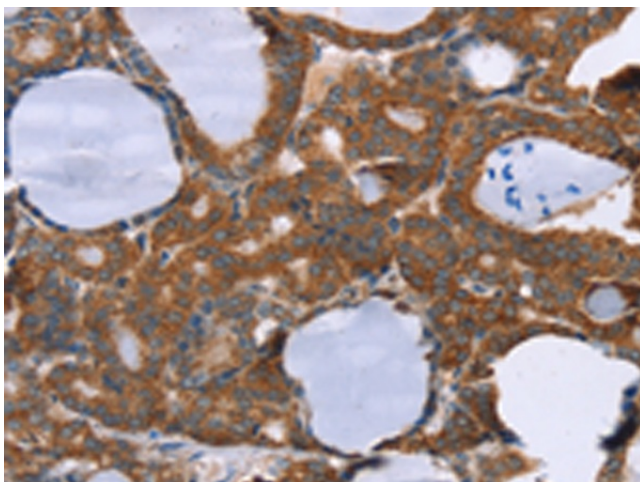
NIR2 (PITPNM1) Rabbit Polyclonal Antibody

Product data:

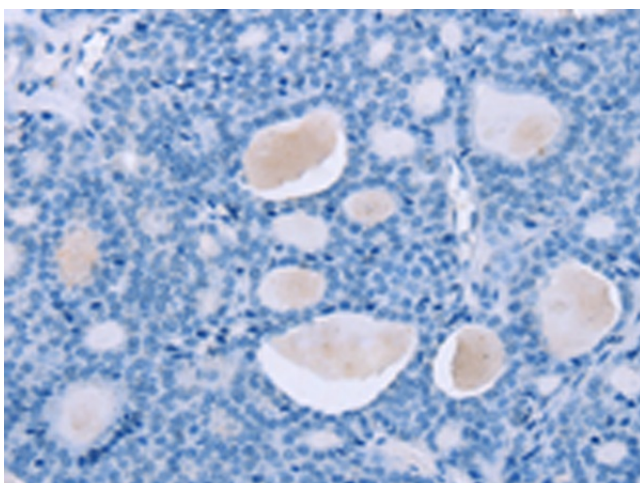
Product Type:	Primary Antibodies
Applications:	IHC
Recommended Dilution:	IHC: 25-100 Positive control: Human thyroid cancer Predicted cell location: Cytoplasm
Reactivity:	Human, Mouse, Rat
Host:	Rabbit
Isotype:	IgG
Clonality:	Polyclonal
Immunogen:	Fusion protein of human PITPNM1
Formulation:	pH7.4 PBS, 0.05% NaN ₃ , 40% Glycerol
Purification:	Antigen affinity purification
Conjugation:	Unconjugated
Storage:	Store at -20°C as received.
Stability:	Stable for 12 months from date of receipt.
Gene Name:	phosphatidylinositol transfer protein membrane associated 1
Database Link:	NP_004901 Entrez Gene 18739 Mouse Entrez Gene 361694 Rat Entrez Gene 9600 Human O00562
Background:	PITPNM1 belongs to a family of membrane-associated phosphatidylinositol transfer domain-containing proteins that share homology with the Drosophila retinal degeneration B (rdgB) protein.
Synonyms:	DRES9; NIR2; PITPNM; Rd9; RDGB; RDGB1; RDGBA; RDGBA1
Protein Families:	Druggable Genome



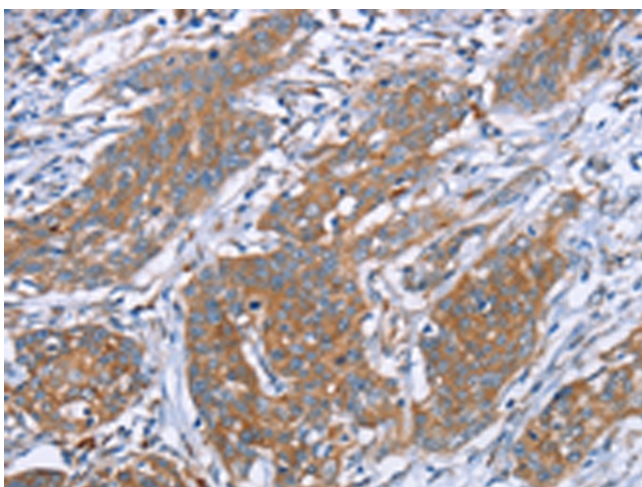
[View online »](#)

Product images:

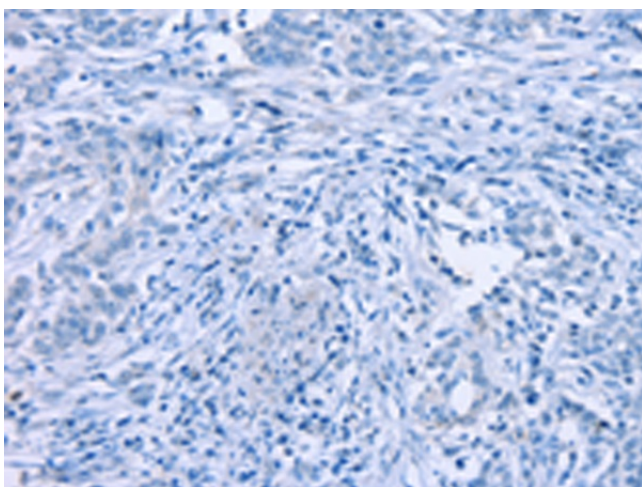
Immunohistochemistry of paraffin-embedded Human thyroid cancer tissue using [TA350229] (PITPNM1 Antibody) at dilution 1/40 (Original magnification: $\times 200$)



Immunohistochemistry of paraffin-embedded Human thyroid cancer tissue using [TA350229] (PITPNM1 Antibody) at dilution 1/40, treated with fusion protein. (Original magnification: $\times 200$)



Immunohistochemistry of paraffin-embedded Human cervical cancer tissue using [TA350229] (PITPNM1 Antibody) at dilution 1/40 (Original magnification: $\times 200$)



Immunohistochemistry of paraffin-embedded Human cervical cancer tissue using [TA350229] (PITPNM1 Antibody) at dilution 1/40, treated with fusion protein. (Original magnification: $\times 200$)