

## Product datasheet for **TA350226S**

### **NEDD4 2 (NEDD4L) Rabbit Polyclonal Antibody**

#### **Product data:**

Product Type:	Primary Antibodies
Applications:	IHC
Recommended Dilution:	IHC: 100-300 Positive control: Human prostate cancer Predicted cell location: Cytoplasm
Reactivity:	Human, Mouse
Host:	Rabbit
Isotype:	IgG
Clonality:	Polyclonal
Immunogen:	Fusion protein of human NEDD4L
Formulation:	pH7.4 PBS, 0.05% NaN <sub>3</sub> , 40% GlycerolIn
Purification:	Antigen affinity purification
Conjugation:	Unconjugated
Storage:	Store at -20°C as received.
Stability:	Stable for 12 months from date of receipt.
Gene Name:	neural precursor cell expressed, developmentally down-regulated 4-like, E3 ubiquitin protein ligase
Database Link:	<a href="#">NP_056092</a> <a href="#">Entrez Gene 83814 Mouse</a> <a href="#">Entrez Gene 23327 Human</a> <a href="#">Q96PU5</a>
Background:	This gene encodes a member of the Nedd4 family of HECT domain E3 ubiquitin ligases. HECT domain E3 ubiquitin ligases transfer ubiquitin from E2 ubiquitin-conjugating enzymes to protein substrates, thus targeting specific proteins for lysosomal degradation. The encoded protein mediates the ubiquitination of multiple target substrates and plays a critical role in epithelial sodium transport by regulating the cell surface expression of the epithelial sodium channel, ENaC. Single nucleotide polymorphisms in this gene may be associated with essential hypertension.
Synonyms:	hNEDD4-2; NEDD4-2; NEDD4.2; RSP5

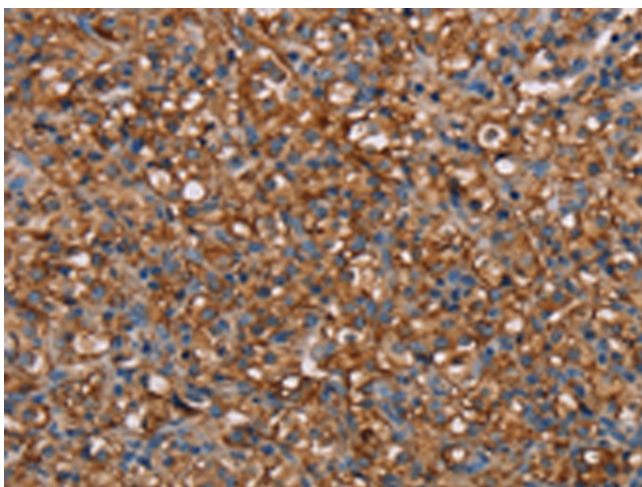


[View online »](#)

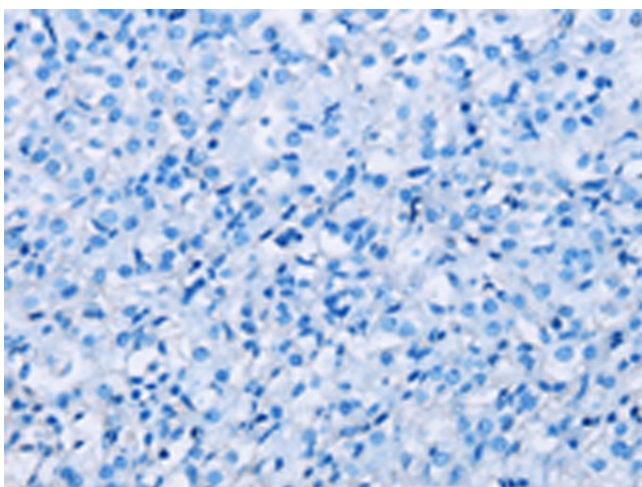
Protein Families: Druggable Genome

Protein Pathways: Endocytosis, Ubiquitin mediated proteolysis

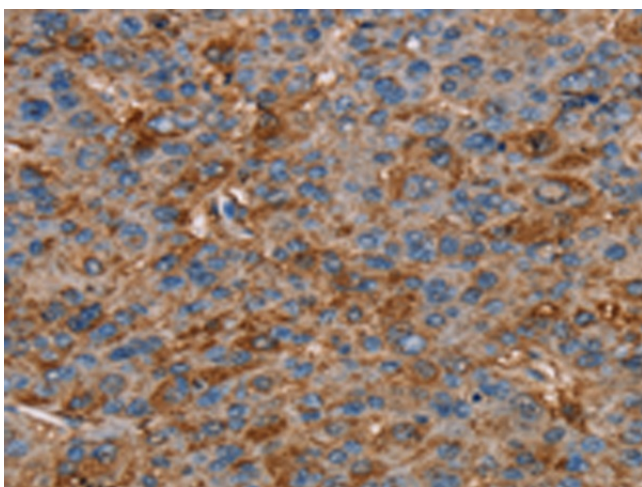
### Product images:



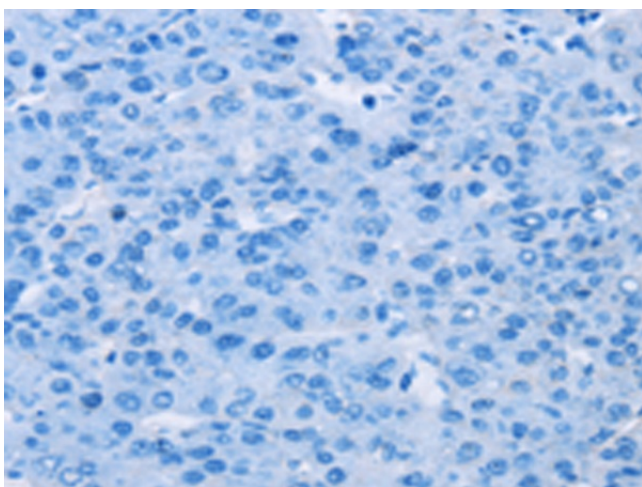
Immunohistochemistry of paraffin-embedded Human prostate cancer tissue using [TA350226] (NEDD4L Antibody) at dilution 1/60 (Original magnification:  $\times 200$ )



Immunohistochemistry of paraffin-embedded Human prostate cancer tissue using [TA350226] (NEDD4L Antibody) at dilution 1/60, treated with fusion protein. (Original magnification:  $\times 200$ )



Immunohistochemistry of paraffin-embedded Human liver cancer tissue using [TA350226] (NEDD4L Antibody) at dilution 1/60 (Original magnification:  $\times 200$ )



Immunohistochemistry of paraffin-embedded Human liver cancer tissue using [TA350226] (NEDD4L Antibody) at dilution 1/60, treated with fusion protein. (Original magnification:  $\times 200$ )