

Product datasheet for **TA350226**

NEDD4 2 (NEDD4L) Rabbit Polyclonal Antibody

Product data:

Product Type:	Primary Antibodies
Applications:	IHC
Recommended Dilution:	IHC: 100-300 Positive control: Human prostate cancer Predicted cell location: Cytoplasm
Reactivity:	Human, Mouse
Host:	Rabbit
Isotype:	IgG
Clonality:	Polyclonal
Immunogen:	Fusion protein of human NEDD4L
Formulation:	pH7.4 PBS, 0.05% NaN3, 40% GlycerolIn
Concentration:	lot specific
Purification:	Antigen affinity purification
Conjugation:	Unconjugated
Storage:	Store at -20°C as received.
Stability:	Stable for 12 months from date of receipt.
Gene Name:	neural precursor cell expressed, developmentally down-regulated 4-like, E3 ubiquitin protein ligase
Database Link:	NP_056092 Entrez Gene 83814 Mouse Entrez Gene 23327 Human Q96PU5

Background: This gene encodes a member of the Nedd4 family of HECT domain E3 ubiquitin ligases. HECT domain E3 ubiquitin ligases transfer ubiquitin from E2 ubiquitin-conjugating enzymes to protein substrates, thus targeting specific proteins for lysosomal degradation. The encoded protein mediates the ubiquitination of multiple target substrates and plays a critical role in epithelial sodium transport by regulating the cell surface expression of the epithelial sodium channel, ENaC. Single nucleotide polymorphisms in this gene may be associated with essential hypertension.



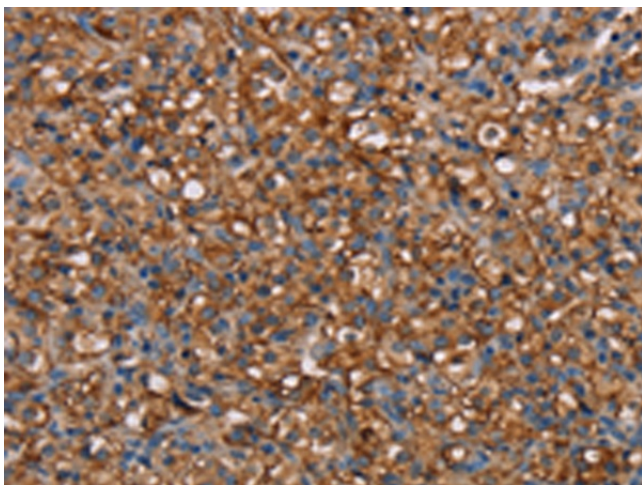
[View online »](#)

Synonyms: hNEDD4-2; NEDD4-2; NEDD4.2; RSP5

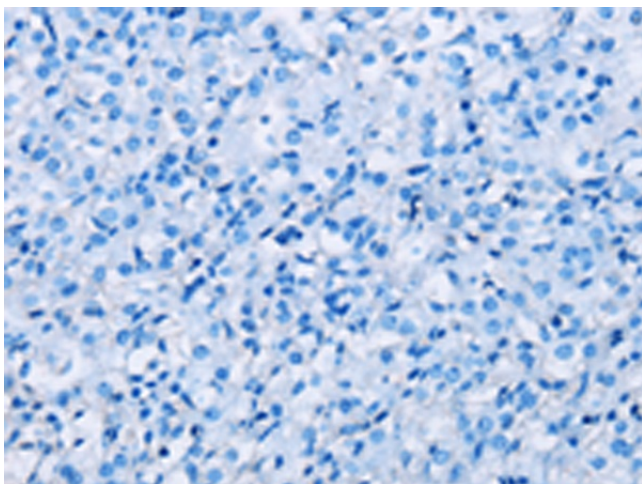
Protein Families: Druggable Genome

Protein Pathways: Endocytosis, Ubiquitin mediated proteolysis

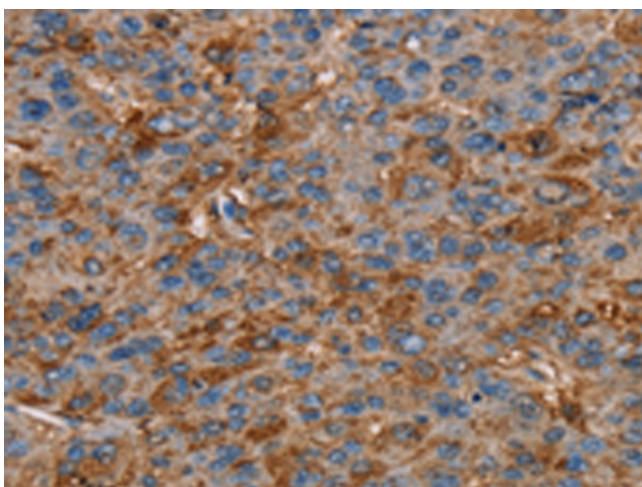
Product images:



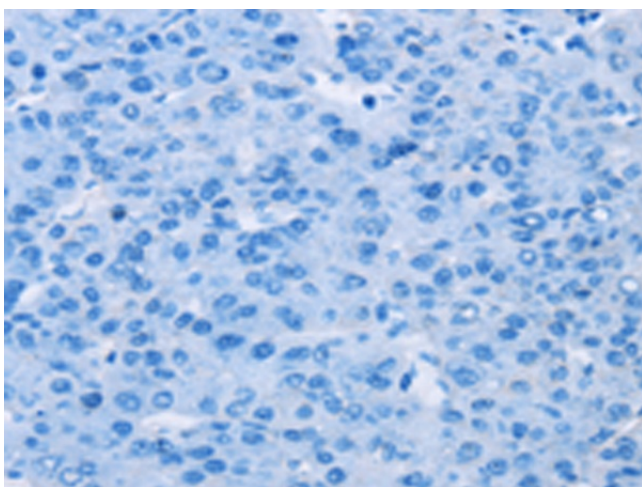
Immunohistochemistry of paraffin-embedded Human prostate cancer tissue using TA350226 (NEDD4L Antibody) at dilution 1/60 (Original magnification: $\times 200$)



Immunohistochemistry of paraffin-embedded Human prostate cancer tissue using TA350226 (NEDD4L Antibody) at dilution 1/60, treated with fusion protein. (Original magnification: $\times 200$)



Immunohistochemistry of paraffin-embedded Human liver cancer tissue using TA350226 (NEDD4L Antibody) at dilution 1/60 (Original magnification: $\times 200$)



Immunohistochemistry of paraffin-embedded Human liver cancer tissue using TA350226 (NEDD4L Antibody) at dilution 1/60, treated with fusion protein. (Original magnification: $\times 200$)