

Product datasheet for **TA350223**

Nectin 2 (NECTIN2) Rabbit Polyclonal Antibody

Product data:

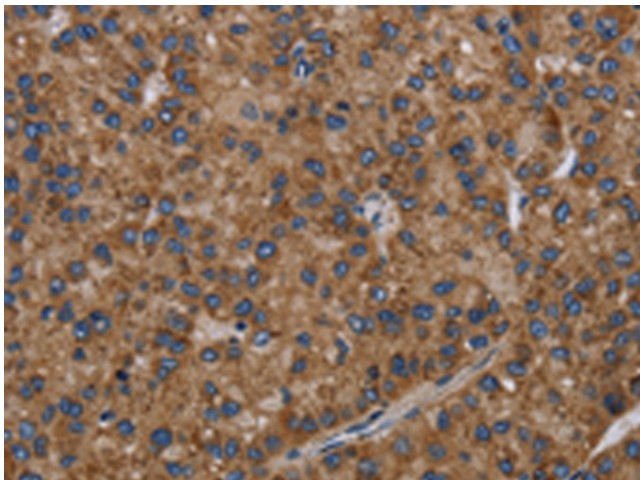
Product Type:	Primary Antibodies
Applications:	IHC
Recommended Dilution:	IHC: 50-200 Positive control: Human liver cancer Predicted cell location: Cytoplasm
Reactivity:	Human
Host:	Rabbit
Isotype:	IgG
Clonality:	Polyclonal
Immunogen:	Fusion protein of human PVRL2
Formulation:	pH7.4 PBS, 0.05% NaN ₃ , 40% Glycerol
Concentration:	lot specific
Purification:	Antigen affinity purification
Conjugation:	Unconjugated
Storage:	Store at -20°C as received.
Stability:	Stable for 12 months from date of receipt.
Gene Name:	nectin cell adhesion molecule 2
Database Link:	NP_001036189 Entrez Gene 5819 Human Q92692
Background:	This gene encodes a single-pass type I membrane glycoprotein with two Ig-like C2-type domains and an Ig-like V-type domain. This protein is one of the plasma membrane components of adherens junctions. It also serves as an entry for certain mutant strains of herpes simplex virus and pseudorabies virus, and it is involved in cell to cell spreading of these viruses. Variations in this gene have been associated with differences in the severity of multiple sclerosis.
Synonyms:	CD112; HVEB; PRR2; PVRL2; PVRR2
Protein Families:	Druggable Genome, Transmembrane



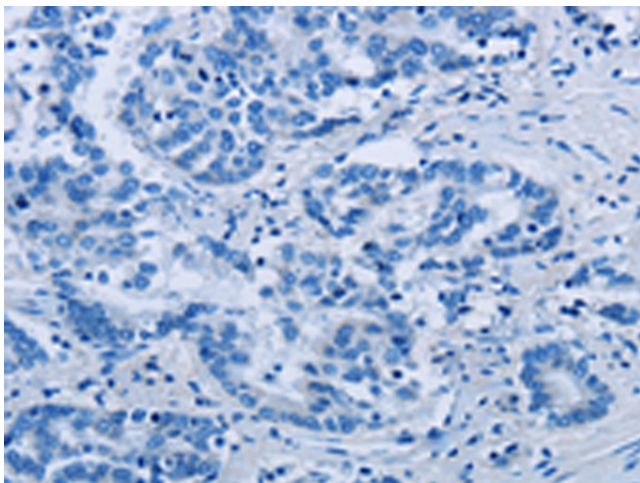
[View online »](#)

Protein Pathways: Adherens junction, Cell adhesion molecules (CAMs)

Product images:



Immunohistochemistry of paraffin-embedded Human liver cancer tissue using TA350223 (NECTIN2 Antibody) at dilution 1/40 (Original magnification: $\times 200$)



Immunohistochemistry of paraffin-embedded Human liver cancer tissue using TA350223 (NECTIN2 Antibody) at dilution 1/40, treated with fusion protein. (Original magnification: $\times 200$)