

Product datasheet for **TA350220**

NDUFS8 Rabbit Polyclonal Antibody

Product data:

| | |
|-------------------------|--|
| Product Type: | Primary Antibodies |
| Applications: | IHC, WB |
| Recommended Dilution: | WB: 500-2000 WB positive control: K562, Hela and Jurkat cells, mouse heart and spleen tissue IHC: 50-200 Positive control: Human liver cancer Predicted cell location: Cytoplasm |
| Reactivity: | Human, Mouse |
| Host: | Rabbit |
| Isotype: | IgG |
| Clonality: | Polyclonal |
| Immunogen: | Fusion protein of human NDUFS8 |
| Formulation: | pH7.4 PBS, 0.05% NaN ₃ , 40% Glycerol |
| Concentration: | lot specific |
| Purification: | Antigen affinity purification |
| Conjugation: | Unconjugated |
| Storage: | Store at -20°C as received. |
| Stability: | Stable for 12 months from date of receipt. |
| Predicted Protein Size: | 24 kDa |
| Gene Name: | NADH:ubiquinone oxidoreductase core subunit S8 |
| Database Link: | NP_002487 Entrez Gene 225887 Mouse Entrez Gene 4728 Human O00217 |



[View online »](#)

Background:

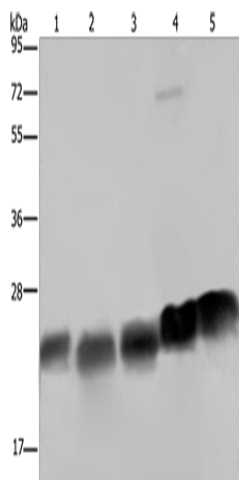
This gene encodes a subunit of mitochondrial NADH:ubiquinone oxidoreductase, or Complex I, a multimeric enzyme of the respiratory chain responsible for NADH oxidation, ubiquinone reduction, and the ejection of protons from mitochondria. The encoded protein is involved in the binding of two of the six to eight iron-sulfur clusters of Complex I and, as such, is required in the electron transfer process. Mutations in this gene have been associated with Leigh syndrome.

Synonyms:

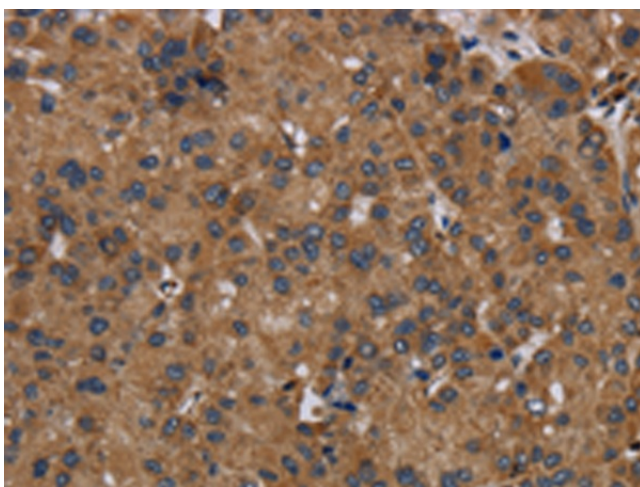
CI-23k; CI23KD; TYKY

Protein Pathways:

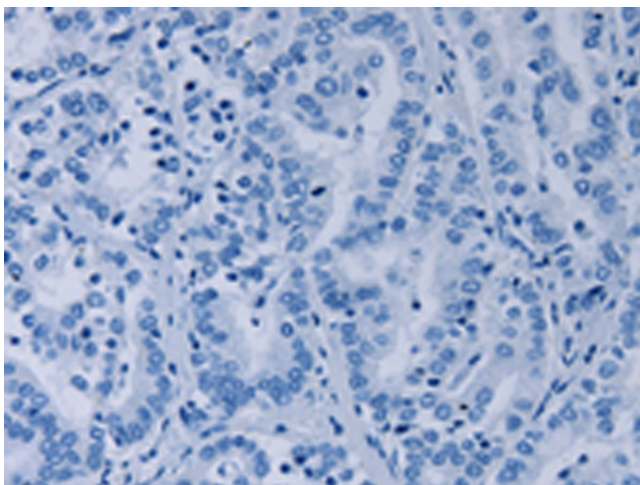
Alzheimer's disease, Huntington's disease, Metabolic pathways, Oxidative phosphorylation, Parkinson's disease

Product images:


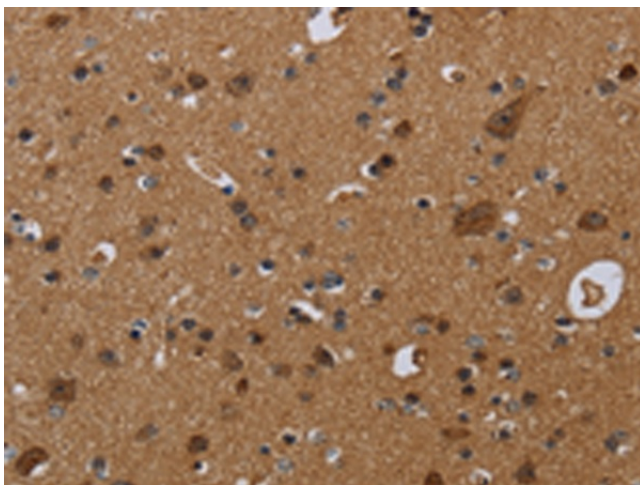
Gel: 10%SDS-PAGE
 Lysate: 40 µg
 Lane 1-5: K562 cells
 HeLa cells
 Jurkat cells
 mouse heart tissue
 Mouse spleen tissue
 Primary antibody: TA350220 (NDUFS8 Antibody)
 at dilution 1/250
 Secondary antibody: Goat anti rabbit IgG at
 1/8000 dilution
 Exposure time: 5 seconds



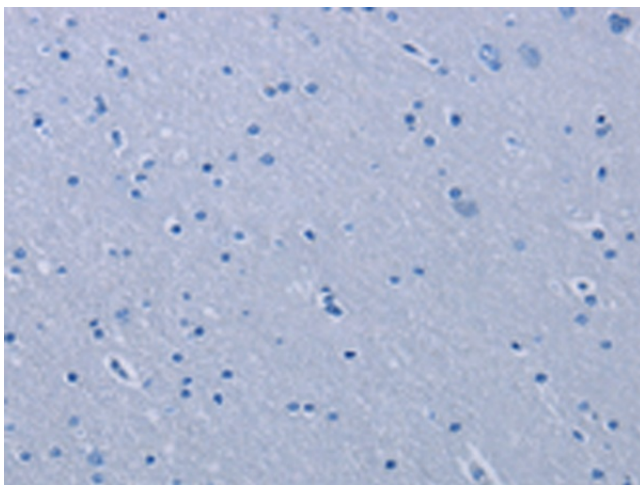
Immunohistochemistry of paraffin-embedded
 Human liver cancer tissue using TA350220
 (NDUFS8 Antibody) at dilution 1/50 (Original
 magnification: x200)



Immunohistochemistry of paraffin-embedded Human liver cancer tissue using TA350220 (NDUFS8 Antibody) at dilution 1/50, treated with fusion protein. (Original magnification: ×200)



Immunohistochemistry of paraffin-embedded Human brain tissue using TA350220 (NDUFS8 Antibody) at dilution 1/50 (Original magnification: ×200)



Immunohistochemistry of paraffin-embedded Human brain tissue using TA350220 (NDUFS8 Antibody) at dilution 1/50, treated with fusion protein. (Original magnification: ×200)