

Product datasheet for **TA350216**

NDUFS1 Rabbit Polyclonal Antibody

Product data:

Product Type:	Primary Antibodies
Applications:	IHC, WB
Recommended Dilution:	WB: 1000-5000 WB positive control: Raji, Jurkat and hela cells IHC: 50-200 Positive control: Human breast cancer Predicted cell location: Cytoplasm
Reactivity:	Human, Mouse, Rat
Host:	Rabbit
Isotype:	IgG
Clonality:	Polyclonal
Immunogen:	Fusion protein of human NDUFS1
Formulation:	pH7.4 PBS, 0.05% NaN ₃ , 40% Glycerol
Concentration:	lot specific
Purification:	Antigen affinity purification
Conjugation:	Unconjugated
Storage:	Store at -20°C as received.
Stability:	Stable for 12 months from date of receipt.
Predicted Protein Size:	79 kDa
Gene Name:	NADH:ubiquinone oxidoreductase core subunit S1
Database Link:	NP_004997 Entrez Gene 227197 Mouse Entrez Gene 301458 Rat Entrez Gene 4719 Human P28331



[View online »](#)

Background:

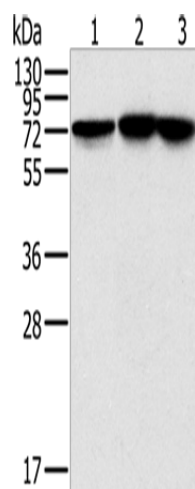
The protein encoded by this gene belongs to the complex I 75 kDa subunit family. Mammalian complex I is composed of 45 different subunits. It locates at the mitochondrial inner membrane. This protein has NADH dehydrogenase activity and oxidoreductase activity. It transfers electrons from NADH to the respiratory chain. The immediate electron acceptor for the enzyme is believed to be ubiquinone. This protein is the largest subunit of complex I and it is a component of the iron-sulfur (IP) fragment of the enzyme.

Synonyms:

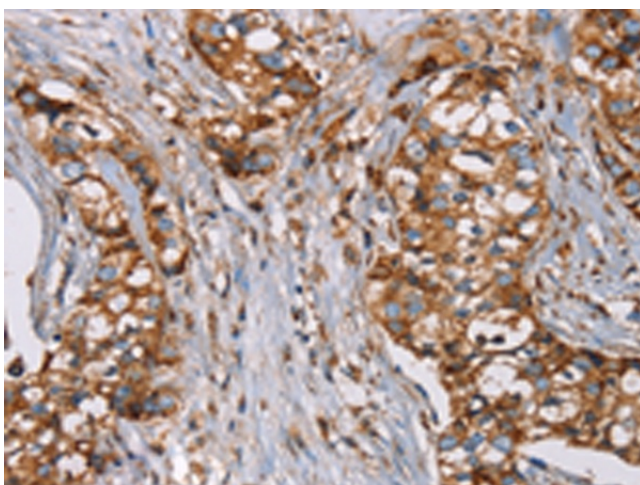
CI-75k; CI-75Kd; PRO1304

Protein Pathways:

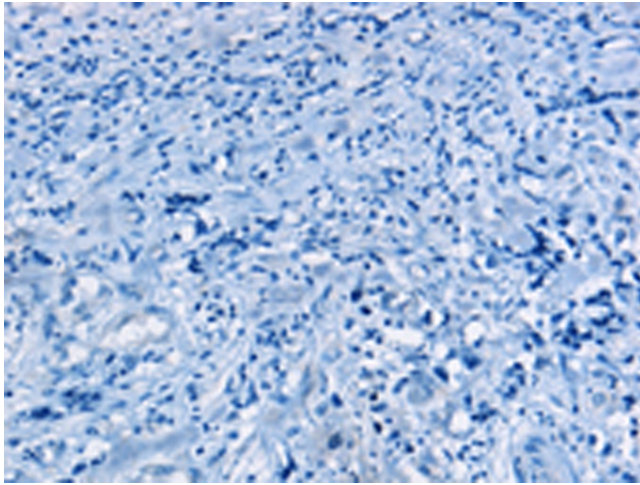
Alzheimer's disease, Huntington's disease, Metabolic pathways, Oxidative phosphorylation, Parkinson's disease

Product images:

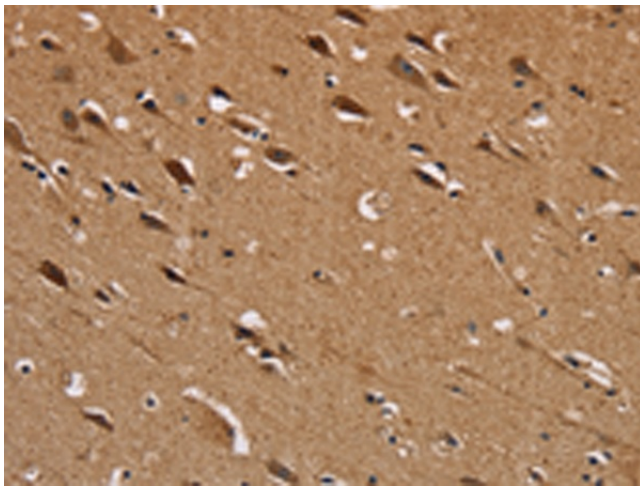
Gel: 10%SDS-PAGE
Lysate: 40 µg
Lane 1-3: Raji cells
Jurkat cells
hela cells
Primary antibody: TA350216 (NDUFS1 Antibody)
at dilution 1/800
Secondary antibody: Goat anti rabbit IgG at
1/8000 dilution
Exposure time: 10 seconds



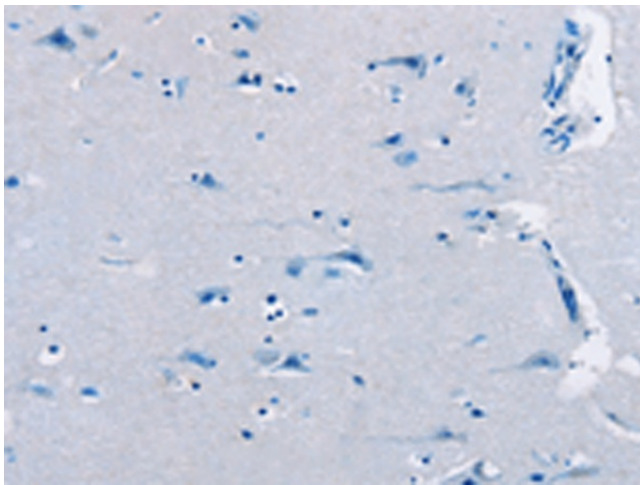
Immunohistochemistry of paraffin-embedded
Human breast cancer tissue using TA350216
(NDUFS1 Antibody) at dilution 1/50 (Original
magnification: ×200)



Immunohistochemistry of paraffin-embedded Human breast cancer tissue using TA350216 (NDUFS1 Antibody) at dilution 1/50, treated with fusion protein. (Original magnification: ×200)



Immunohistochemistry of paraffin-embedded Human brain tissue using TA350216 (NDUFS1 Antibody) at dilution 1/50 (Original magnification: ×200)



Immunohistochemistry of paraffin-embedded Human brain tissue using TA350216 (NDUFS1 Antibody) at dilution 1/50, treated with fusion protein. (Original magnification: ×200)