

## Product datasheet for **TA350212S**

### NDUFA2 Rabbit Polyclonal Antibody

#### Product data:

Product Type:	Primary Antibodies
Applications:	IHC, WB
Recommended Dilution:	WB: 200-1000 WB positive control: Mouse heart tissue lysate IHC: 50-200 Positive control: Human esophagus cancer Predicted cell location: Cytoplasm
Reactivity:	Human, Mouse
Host:	Rabbit
Isotype:	IgG
Clonality:	Polyclonal
Immunogen:	Fusion protein of human NDUFA2
Formulation:	pH7.4 PBS, 0.05% NaN <sub>3</sub> , 40% Glycerol
Purification:	Antigen affinity purification
Conjugation:	Unconjugated
Storage:	Store at -20°C as received.
Stability:	Stable for 12 months from date of receipt.
Predicted Protein Size:	11 kDa
Gene Name:	NADH:ubiquinone oxidoreductase subunit A2
Database Link:	<a href="#">NP_002479</a> <a href="#">Entrez Gene 4695 Human</a> <a href="#">O43678</a>

**Background:** The encoded protein is a subunit of the hydrophobic protein fraction of the NADH:ubiquinone oxidoreductase (complex 1), the first enzyme complex in the electron transport chain located in the inner mitochondrial membrane, and may be involved in regulating complex I activity or its assembly via assistance in redox processes. Mutations in this gene are associated with Leigh syndrome, an early-onset progressive neurodegenerative disorder.



[View online »](#)

**Synonyms:** B8; CD14; CIB8

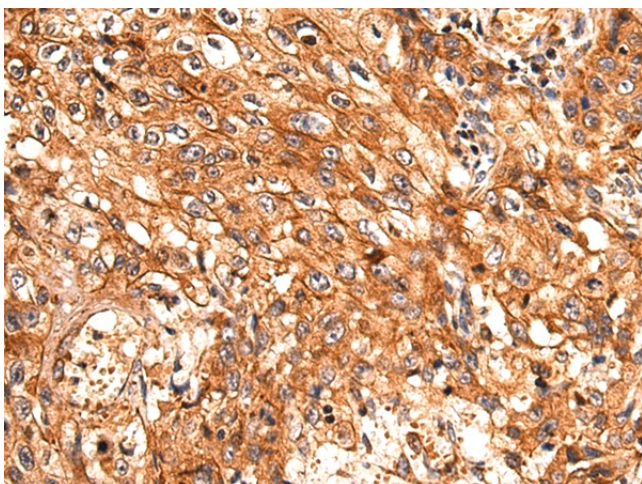
**Protein Pathways:** Alzheimer's disease, Huntington's disease, Metabolic pathways, Oxidative phosphorylation, Parkinson's disease

**Product images:**

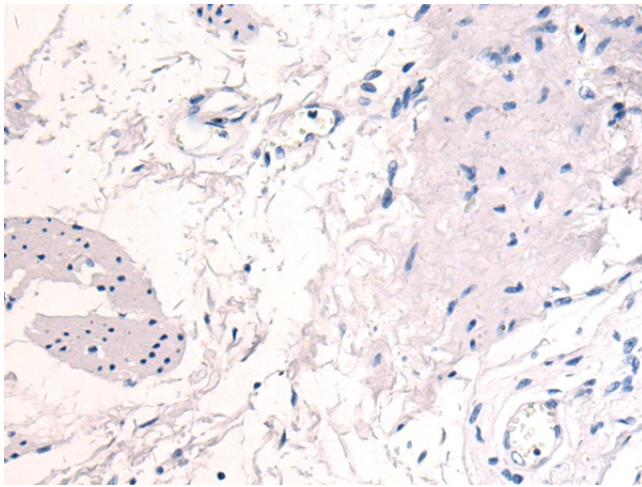
kDa  
95—  
72—  
55—  
36—  
28—  
17—  
10—



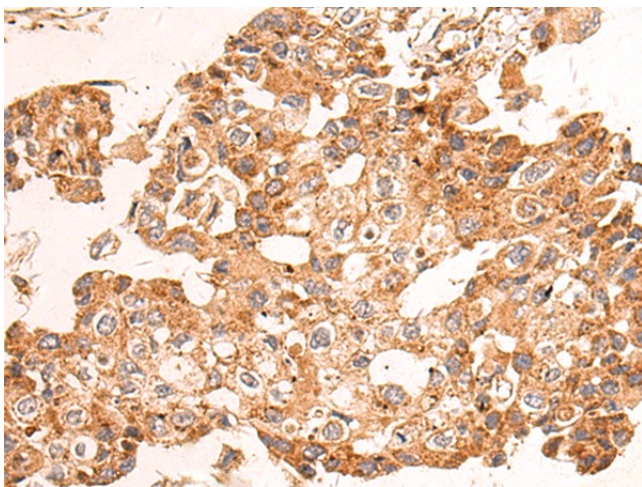
Gel: 12%SDS-PAGE  
Lysate: 40  $\mu$ g  
Lane: Mouse heart tissue lysate  
Primary antibody: [TA350212] (NDUFA2 Antibody) at dilution 1/400  
Secondary antibody: Goat anti rabbit IgG at 1/5000 dilution  
Exposure time: 2 minutes



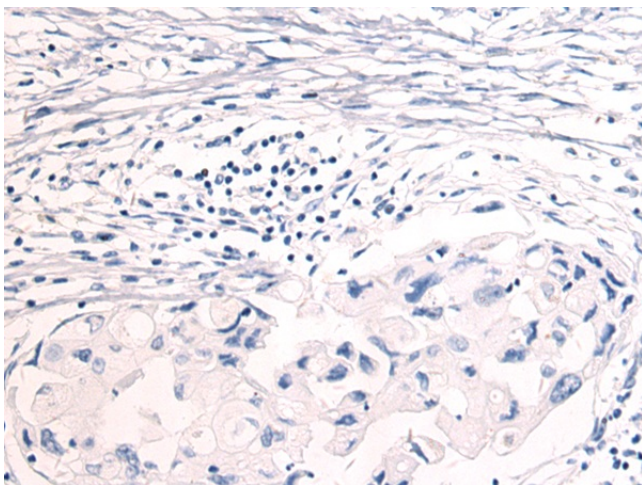
Immunohistochemistry of paraffin-embedded Human esophagus cancer tissue using [TA350212] (NDUFA2 Antibody) at dilution 1/60 (Original magnification:  $\times$ 200)



Immunohistochemistry of paraffin-embedded Human esophagus cancer tissue using [TA350212] (NDUFA2 Antibody) at dilution 1/60, treated with fusion protein. (Original magnification: x200)



Immunohistochemistry of paraffin-embedded Human breast cancer tissue using [TA350212] (NDUFA2 Antibody) at dilution 1/60 (Original magnification: x200)



Immunohistochemistry of paraffin-embedded Human breast cancer tissue using [TA350212] (NDUFA2 Antibody) at dilution 1/60, treated with fusion protein. (Original magnification: x200)