

Product datasheet for **TA350201**

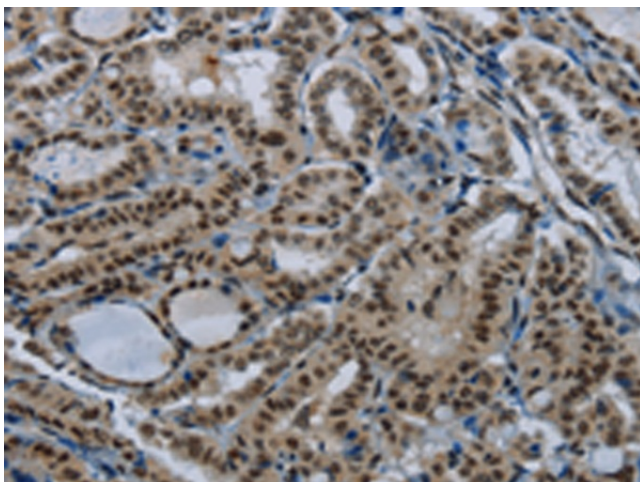
NBL1 Rabbit Polyclonal Antibody

Product data:

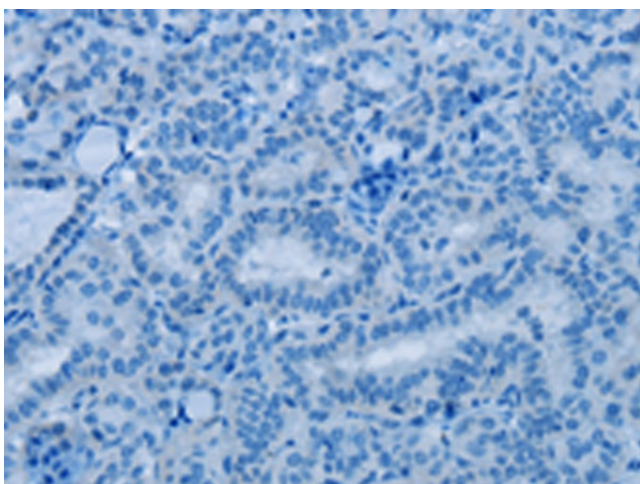
Product Type:	Primary Antibodies
Applications:	IHC
Recommended Dilution:	IHC: 50-200 Positive control: Human thyroid cancer Predicted cell location: Nucleus
Reactivity:	Human, Mouse, Rat
Host:	Rabbit
Isotype:	IgG
Clonality:	Polyclonal
Immunogen:	Fusion protein of human NBL1
Formulation:	pH7.4 PBS, 0.05% NaN ₃ , 40% Glycerol
Concentration:	lot specific
Purification:	Antigen affinity purification
Conjugation:	Unconjugated
Storage:	Store at -20°C as received.
Stability:	Stable for 12 months from date of receipt.
Gene Name:	neuroblastoma 1, DAN family BMP antagonist
Database Link:	NP_877421 Entrez Gene 17965 Mouse Entrez Gene 50594 Rat Entrez Gene 4681 Human P41271
Background:	This gene product is the founding member of the evolutionarily conserved CAN (Cerberus and DAN) family of proteins, which contain a domain resembling the CTCK (C-terminal cystine knot-like) motif found in a number of signaling molecules. These proteins are secreted, and act as BMP (bone morphogenetic protein) antagonists by binding to BMPs and preventing them from interacting with their receptors. They may thus play an important role during growth and development.
Synonyms:	D1S1733E; DAN; DAND1; NB; NO3
Protein Families:	Secreted Protein



[View online »](#)

Product images:

Immunohistochemistry of paraffin-embedded Human thyroid cancer tissue using TA350201 (NBL1 Antibody) at dilution 1/50 (Original magnification: $\times 200$)



Immunohistochemistry of paraffin-embedded Human thyroid cancer tissue using TA350201 (NBL1 Antibody) at dilution 1/50, treated with fusion protein. (Original magnification: $\times 200$)