

## Product datasheet for **TA350198S**

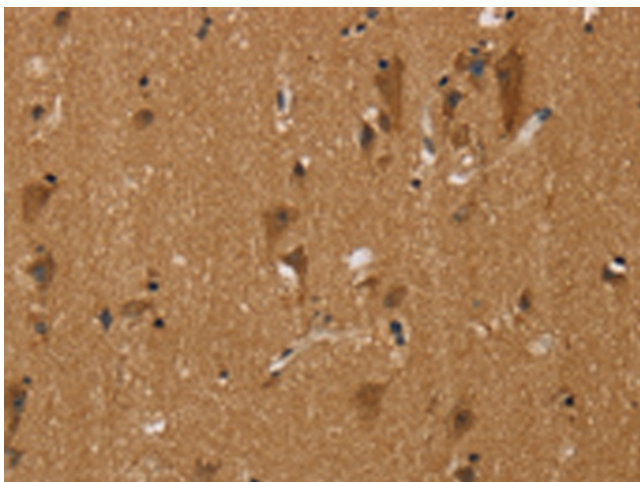
### NADE (BEX3) Rabbit Polyclonal Antibody

#### Product data:

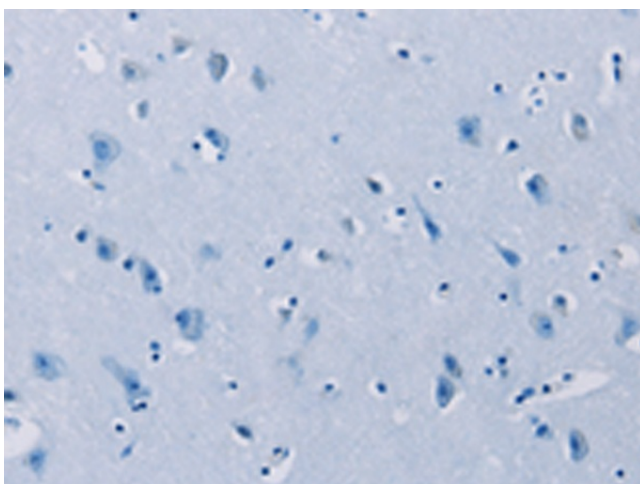
Product Type:	Primary Antibodies
Applications:	IHC
Recommended Dilution:	IHC: 50-200 Positive control: Human brain Predicted cell location: Cytoplasm and Nucleus
Reactivity:	Human
Host:	Rabbit
Isotype:	IgG
Clonality:	Polyclonal
Immunogen:	Fusion protein of human NGFRAP1
Formulation:	pH7.4 PBS, 0.05% NaN <sub>3</sub> , 40% GlycerolIn
Purification:	Antigen affinity purification
Conjugation:	Unconjugated
Storage:	Store at -20°C as received.
Stability:	Stable for 12 months from date of receipt.
Gene Name:	brain expressed X-linked 3
Database Link:	<a href="#">NP_996798</a> <a href="#">Entrez Gene 27018 Human</a> <a href="#">Q00994</a>
Background:	Protein BEX3 is a protein that in humans is encoded by the NGFRAP1 gene. May be a signaling adapter molecule involved in p75NTR-mediated apoptosis induced by NGF. Plays a role in zinc-triggered neuronal death By similarity. May play an important role in the pathogenesis of neurogenetic diseases.
Synonyms:	Bex; DXS6984E; HGR74; NADE; NGFRAP1
Protein Families:	Druggable Genome
Protein Pathways:	Neurotrophin signaling pathway



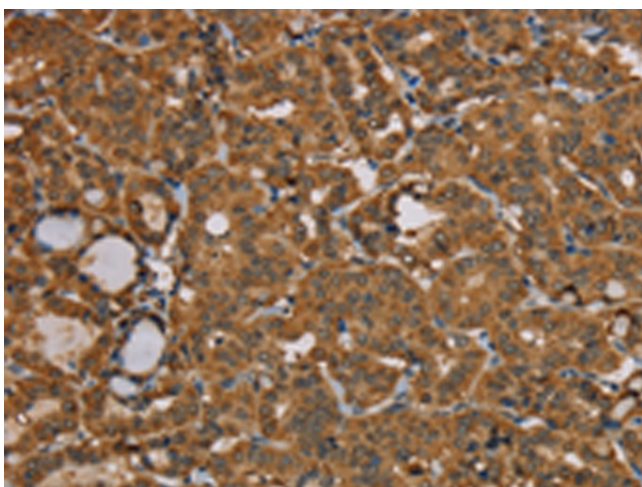
[View online »](#)

**Product images:**

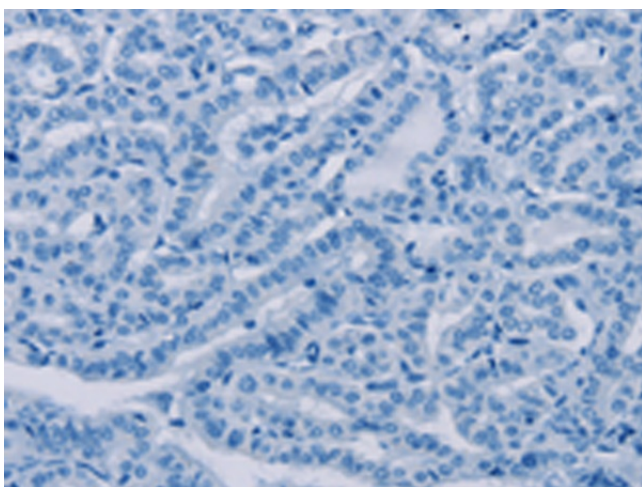
Immunohistochemistry of paraffin-embedded Human brain tissue using [TA350198] (BEX3 Antibody) at dilution 1/40 (Original magnification: ×200)



Immunohistochemistry of paraffin-embedded Human brain tissue using [TA350198] (BEX3 Antibody) at dilution 1/40, treated with fusion protein. (Original magnification: ×200)



Immunohistochemistry of paraffin-embedded Human thyroid cancer tissue using [TA350198] (BEX3 Antibody) at dilution 1/40 (Original magnification:  $\times 200$ )



Immunohistochemistry of paraffin-embedded Human thyroid cancer tissue using [TA350198] (BEX3 Antibody) at dilution 1/40, treated with fusion protein. (Original magnification:  $\times 200$ )