

Product datasheet for **TA350197**

Myosin Phosphatase (PPP1R12A) Rabbit Polyclonal Antibody

Product data:

Product Type:	Primary Antibodies
Applications:	IHC, WB
Recommended Dilution:	WB: 1000-5000 WB positive control: NIH/3T3, A172, hela and PC3 cells IHC: 25-100 Positive control: Human thyroid cancer Predicted cell location: Cytoplasm
Reactivity:	Human, Mouse, Rat
Host:	Rabbit
Isotype:	IgG
Clonality:	Polyclonal
Immunogen:	Fusion protein of human PPP1R12A
Formulation:	pH7.4 PBS, 0.05% NaN ₃ , 40% Glycerol
Concentration:	lot specific
Purification:	Antigen affinity purification
Conjugation:	Unconjugated
Storage:	Store at -20°C as received.
Stability:	Stable for 12 months from date of receipt.
Predicted Protein Size:	115 kDa
Gene Name:	protein phosphatase 1 regulatory subunit 12A
Database Link:	NP_002471 Entrez Gene 17931 Mouse Entrez Gene 116670 Rat Entrez Gene 4659 Human O14974



[View online »](#)

Background:

Myosin phosphatase target subunit 1, which is also called the myosin-binding subunit of myosin phosphatase, is one of the subunits of myosin phosphatase. Myosin phosphatase regulates the interaction of actin and myosin downstream of the guanosine triphosphatase Rho. The small guanosine triphosphatase Rho is implicated in myosin light chain (MLC) phosphorylation, which results in contraction of smooth muscle and interaction of actin and myosin in nonmuscle cells. The guanosine triphosphate (GTP)-bound, active form of RhoA (GTP.RhoA) specifically interacted with the myosin-binding subunit (MBS) of myosin phosphatase, which regulates the extent of phosphorylation of MLC.

Synonyms:

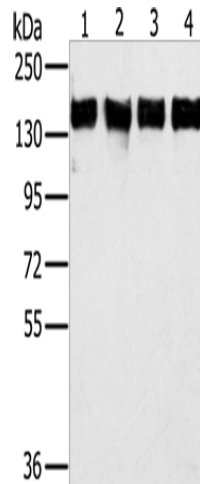
M130; MBS; MYPT1

Protein Families:

Druggable Genome

Protein Pathways:

Focal adhesion, Long-term potentiation, Regulation of actin cytoskeleton, Vascular smooth muscle contraction

Product images:

Gel: 6%SDS-PAGE

Lysate: 40 µg

Lane 1-4: NIH/3T3 cells

A172 cells

hela cells

PC3 cells

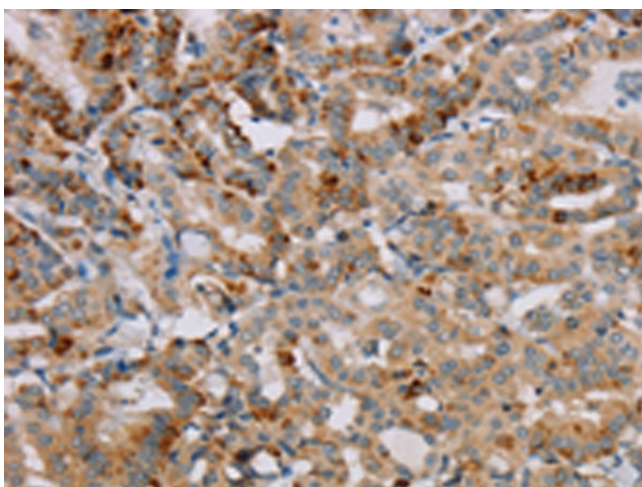
Primary antibody: TA350197 (PPP1R12A

Antibody) at dilution 1/350

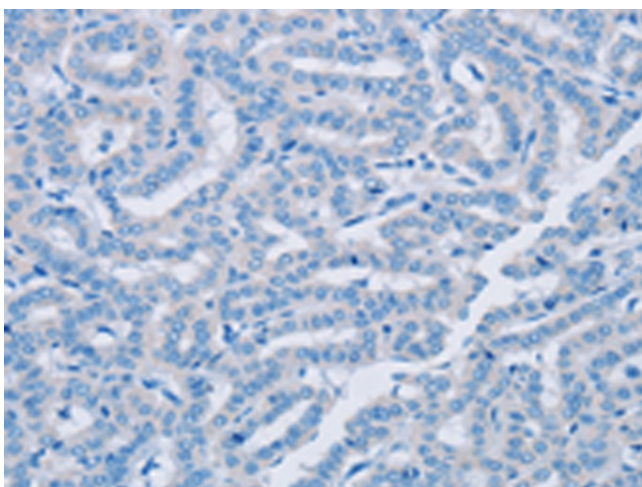
Secondary antibody: Goat anti rabbit IgG at

1/8000 dilution

Exposure time: 40 seconds



Immunohistochemistry of paraffin-embedded Human thyroid cancer tissue using TA350197 (PPP1R12A Antibody) at dilution 1/25 (Original magnification: $\times 200$)



Immunohistochemistry of paraffin-embedded Human thyroid cancer tissue using TA350197 (PPP1R12A Antibody) at dilution 1/25, treated with fusion protein. (Original magnification: $\times 200$)