

## Product datasheet for **TA350191S**

### **MTP18 (MTFP1) Rabbit Polyclonal Antibody**

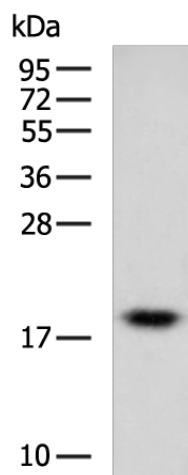
#### **Product data:**

Product Type:	Primary Antibodies
Applications:	IHC, WB
Recommended Dilution:	WB: 500-2000 WB positive control: Mouse heart tissue lysate IHC: 50-200 Positive control: Human cervical cancer Predicted cell location: Cytoplasm
Reactivity:	Human, Mouse
Host:	Rabbit
Isotype:	IgG
Clonality:	Polyclonal
Immunogen:	Fusion protein of human MTFP1
Formulation:	pH7.4 PBS, 0.05% NaN <sub>3</sub> , 40% Glycerol
Purification:	Antigen affinity purification
Conjugation:	Unconjugated
Storage:	Store at -20°C as received.
Stability:	Stable for 12 months from date of receipt.
Predicted Protein Size:	18 kDa
Gene Name:	mitochondrial fission process 1
Database Link:	<a href="#">NP_001003704</a> <a href="#">Entrez Gene 51537 Human</a> <a href="#">Q9UDX5</a>
Background:	MTP18 (mitochondrial 18 kDa protein), also known as HSPC242, is a 166 amino acid protein essential for cell viability. MTP18 may also have a role in maintaining the integrity of the mitochondrial network. Localized to the mitochondrion, expression of MTP18 is regulated by the PI 3-kinase pathway. Loss of function of MTP18 results in the release of cytochrome c, which subsequently activates the caspase cascade and leads to apoptosis.
Synonyms:	HSPC242; MTP18

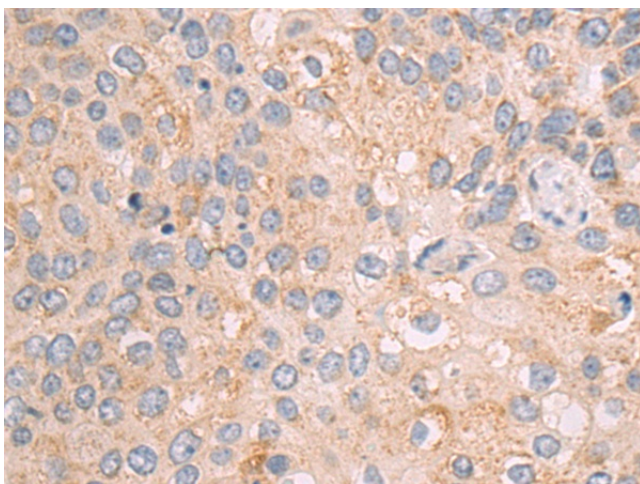


[View online »](#)

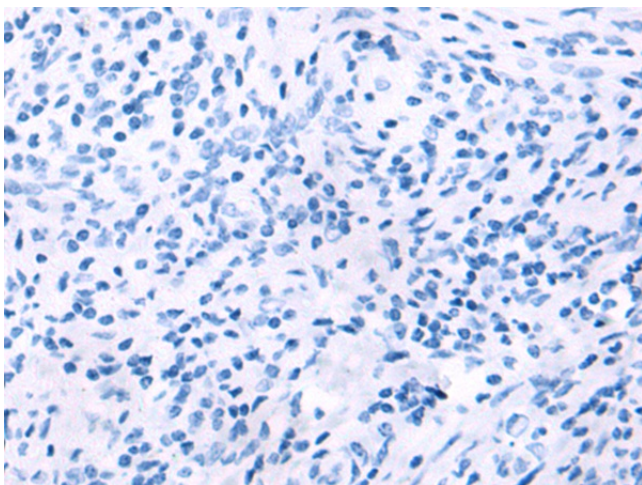
## Product images:



Gel: 12%SDS-PAGE  
Lysate: 40  $\mu$ g  
Lane: Mouse heart tissue lysate  
Primary antibody: [TA350191] (MTPF1 Antibody) at dilution 1/500  
Secondary antibody: Goat anti rabbit IgG at 1/5000 dilution  
Exposure time: 7 seconds



Immunohistochemistry of paraffin-embedded Human cervical cancer tissue using [TA350191] (MTPF1 Antibody) at dilution 1/80 (Original magnification:  $\times$ 200)



Immunohistochemistry of paraffin-embedded Human cervical cancer tissue using [TA350191] (MTP1 Antibody) at dilution 1/80, treated with fusion protein. (Original magnification: ×200)