

Product datasheet for **TA350190S**

MTFR1 Rabbit Polyclonal Antibody

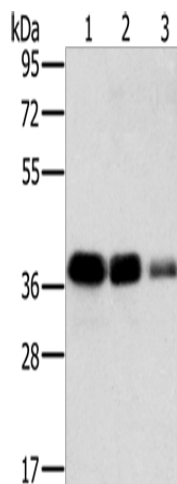
Product data:

Product Type:	Primary Antibodies
Applications:	IHC, WB
Recommended Dilution:	WB: 500-2000 WB positive control: A549, HT-29 and A172 cells IHC: 50-200 Positive control: Human thyroid cancer Predicted cell location: Cytoplasm
Reactivity:	Human
Host:	Rabbit
Isotype:	IgG
Clonality:	Polyclonal
Immunogen:	Fusion protein of human MTFR1
Formulation:	pH7.4 PBS, 0.05% NaN ₃ , 40% Glycerol
Purification:	Antigen affinity purification
Conjugation:	Unconjugated
Storage:	Store at -20°C as received.
Stability:	Stable for 12 months from date of receipt.
Predicted Protein Size:	37 kDa
Gene Name:	mitochondrial fission regulator 1
Database Link:	NP_055452 Entrez Gene 9650 Human Q15390
Background:	This gene encodes a mitochondrial protein that is characterized by a poly-proline rich region. A chicken homolog of this protein promotes mitochondrial fission and the mouse homolog protects cells from oxidative stress. A related pseudogene of this gene is found on chromosome X.
Synonyms:	CHPPR; FAM54A2

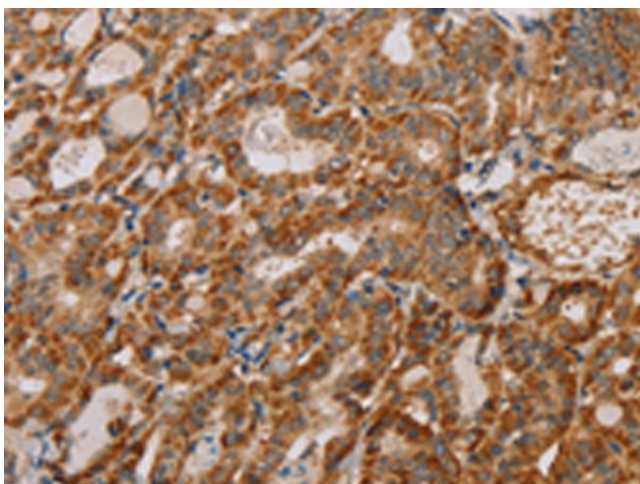


[View online »](#)

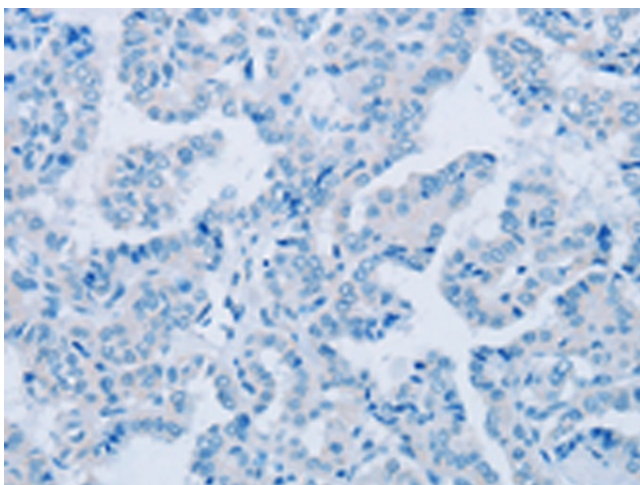
Product images:



Gel: 8%SDS-PAGE
Lysate: 40 μ g
Lane 1-3: A549 cells
HT29 cells
A172 cells
Primary antibody: [TA350190] (MTFR1 Antibody)
at dilution 1/500
Secondary antibody: Goat anti rabbit IgG at
1/8000 dilution
Exposure time: 5 seconds



Immunohistochemistry of paraffin-embedded
Human thyroid cancer tissue using [TA350190]
(MTFR1 Antibody) at dilution 1/40 (Original
magnification: $\times 200$)



Immunohistochemistry of paraffin-embedded
Human thyroid cancer tissue using [TA350190]
(MTFR1 Antibody) at dilution 1/40, treated with
fusion protein. (Original magnification: $\times 200$)