

Product datasheet for **TA350187S**

MTCH2 Rabbit Polyclonal Antibody

Product data:

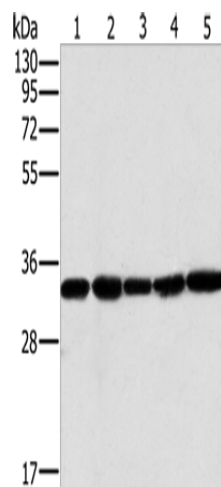
Product Type:	Primary Antibodies
Applications:	IHC, WB
Recommended Dilution:	WB: 1000-5000 WB positive control: Human testis tissue and K562 cells, PC3 cells and human liver cancer tissue, hela cells IHC: 50-200 Positive control: Human thyroid cancer Predicted cell location: Cytoplasm
Reactivity:	Human, Mouse
Host:	Rabbit
Isotype:	IgG
Clonality:	Polyclonal
Immunogen:	Fusion protein of human MTCH2
Formulation:	pH7.4 PBS, 0.05% NaN ₃ , 40% Glycerol
Purification:	Antigen affinity purification
Conjugation:	Unconjugated
Storage:	Store at -20°C as received.
Stability:	Stable for 12 months from date of receipt.
Predicted Protein Size:	33 kDa
Gene Name:	mitochondrial carrier 2
Database Link:	NP_055157 Entrez Gene 56428 Mouse Entrez Gene 23788 Human Q9Y6C9
Background:	Mitochondrial carrier homolog 2 also known as MTCH2 is a protein which in humans is encoded by the MTCH2 gene. MTCH2 (mitochondrial carrier homolog 2), is a 303 amino acid multi-pass mitochondrial membrane protein that contains two solcar repeats and functions to induce mitochondrial depolarization. The substrate transported is not yet known. Induces mitochondrial depolarization.



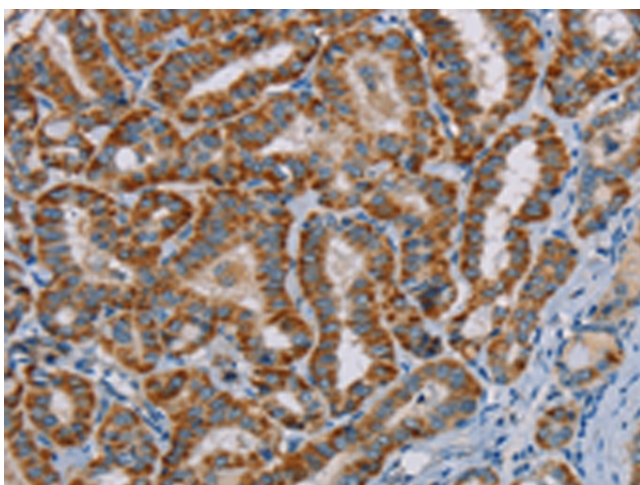
[View online »](#)

Synonyms: HSPC032; MIMP; SLC25A50

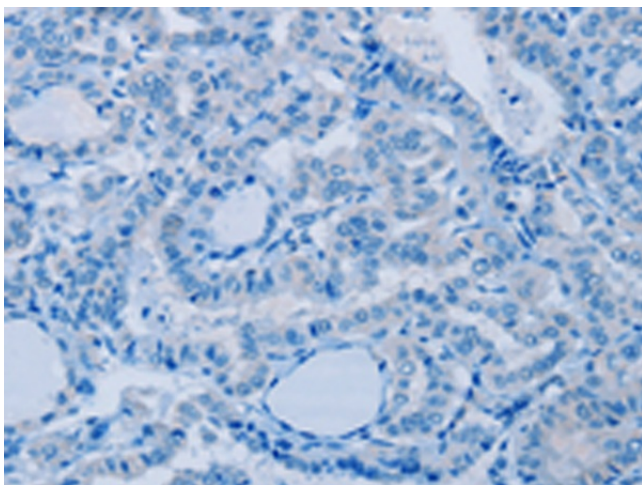
Product images:



Gel: 10%SDS-PAGE
 Lysate: 40 µg
 Lane 1-5: Human testis tissue
 K562 cells
 PC3 cells
 human liver cancer tissue
 hela cells
 Primary antibody: [TA350187] (MTCH2 Antibody)
 at dilution 1/400
 Secondary antibody: Goat anti rabbit IgG at
 1/8000 dilution
 Exposure time: 40 seconds



Immunohistochemistry of paraffin-embedded
 Human thyroid cancer tissue using [TA350187]
 (MTCH2 Antibody) at dilution 1/45 (Original
 magnification: ×200)



Immunohistochemistry of paraffin-embedded Human thyroid cancer tissue using [TA350187] (MTCH2 Antibody) at dilution 1/45, treated with fusion protein. (Original magnification: ×200)