

Product datasheet for **TA350185**

Macrophage Scavenger Receptor I (MSR1) Rabbit Polyclonal Antibody

Product data:

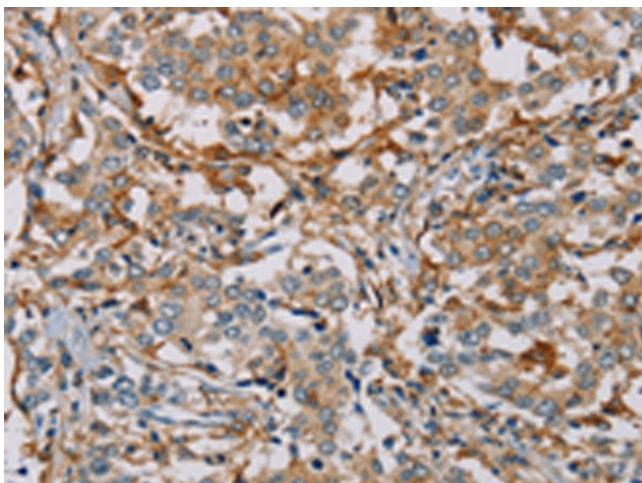
Product Type:	Primary Antibodies
Applications:	IHC
Recommended Dilution:	IHC: 25-100 Positive control: Human liver cancer Predicted cell location: Cytoplasm
Reactivity:	Human, Mouse
Host:	Rabbit
Isotype:	IgG
Clonality:	Polyclonal
Immunogen:	Fusion protein of human MSR1
Formulation:	pH7.4 PBS, 0.05% NaN ₃ , 40% Glycerol
Concentration:	lot specific
Purification:	Antigen affinity purification
Conjugation:	Unconjugated
Storage:	Store at -20°C as received.
Stability:	Stable for 12 months from date of receipt.
Gene Name:	macrophage scavenger receptor 1
Database Link:	NP_619729 Entrez Gene 20288 Mouse Entrez Gene 4481 Human P21757
Background:	This gene encodes the class A macrophage scavenger receptors, which include three different types (1, 2, 3) generated by alternative splicing of this gene. These receptors or isoforms are macrophage-specific trimeric integral membrane glycoproteins and have been implicated in many macrophage-associated physiological and pathological processes including atherosclerosis, Alzheimer's disease, and host defense. The isoforms type 1 and type 2 are functional receptors and are able to mediate the endocytosis of modified low density lipoproteins (LDLs).
Synonyms:	CD204; pHSR1; pHSR2; SCARA1; SR-A; SRA



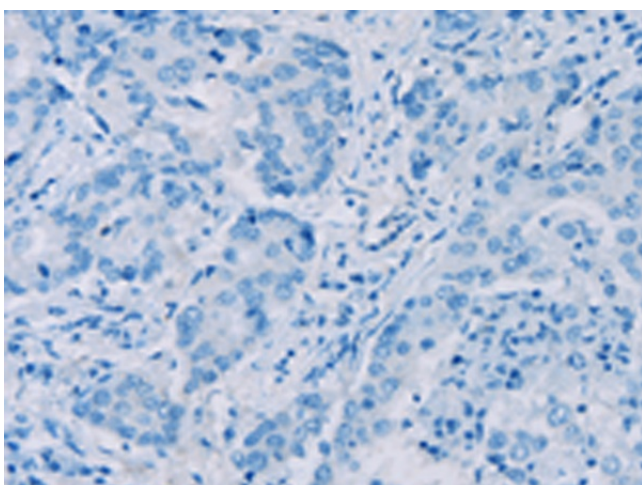
[View online »](#)

Protein Families: Druggable Genome, Transmembrane

Product images:



Immunohistochemistry of paraffin-embedded Human liver cancer tissue using TA350185 (MSR1 Antibody) at dilution 1/30 (Original magnification: ×200)



Immunohistochemistry of paraffin-embedded Human liver cancer tissue using TA350185 (MSR1 Antibody) at dilution 1/30, treated with fusion protein. (Original magnification: ×200)