

Product datasheet for **TA350184**

MRPL39 Rabbit Polyclonal Antibody

Product data:

Product Type:	Primary Antibodies
Applications:	IHC, WB
Recommended Dilution:	WB: 1000-5000 WB positive control: 293T, K562, 231 and hela cells IHC: 50-200 Positive control: Human thyroid cancer Predicted cell location: Cytoplasm
Reactivity:	Human, Mouse
Host:	Rabbit
Isotype:	IgG
Clonality:	Polyclonal
Immunogen:	Fusion protein of human MRPL39
Formulation:	pH7.4 PBS, 0.05% NaN ₃ , 40% Glycerol
Concentration:	lot specific
Purification:	Antigen affinity purification
Conjugation:	Unconjugated
Storage:	Store at -20°C as received.
Stability:	Stable for 12 months from date of receipt.
Predicted Protein Size:	39 kDa
Gene Name:	mitochondrial ribosomal protein L39
Database Link:	NP_542984 Entrez Gene 27393 Mouse Entrez Gene 54148 Human Q9NYK5



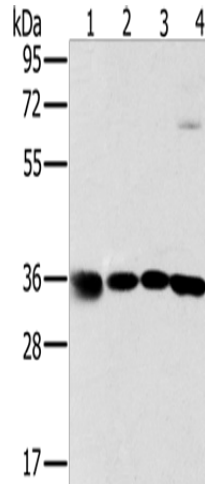
[View online »](#)

Background:

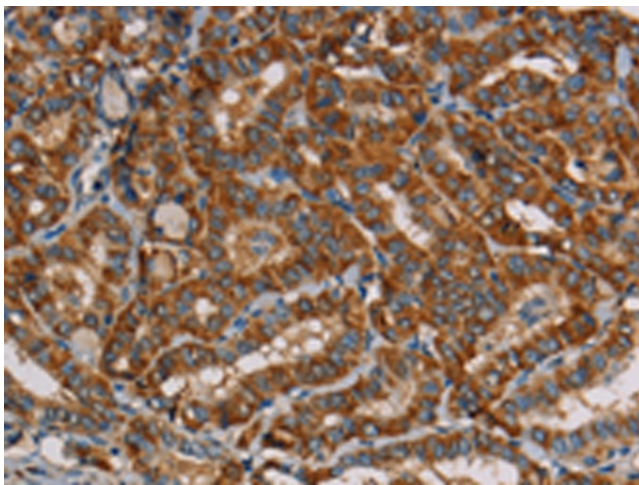
Mammalian mitochondrial ribosomal proteins are encoded by nuclear genes and help in protein synthesis within the mitochondrion. Mitochondrial ribosomes (mitoribosomes) consist of a small 28S subunit and a large 39S subunit. They have an estimated 75% protein to rRNA composition compared to prokaryotic ribosomes, where this ratio is reversed. Another difference between mammalian mitoribosomes and prokaryotic ribosomes is that the latter contain a 5S rRNA.

Synonyms:

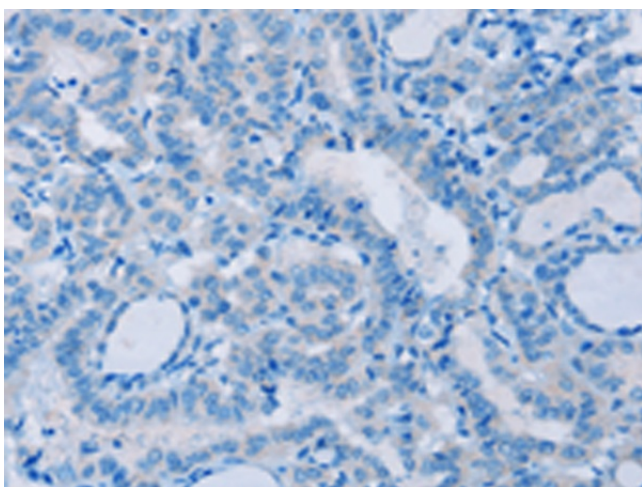
C21orf92; L39mt; MRP-L5; MRPL5; MSTP003; PRED22; PRED66; RPML5

Product images:


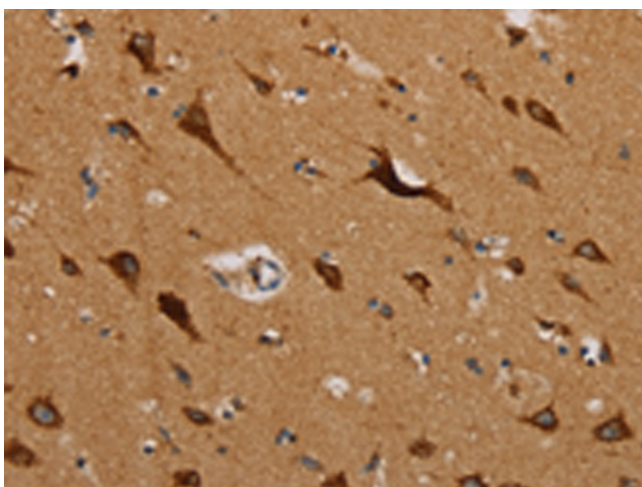
Gel: 8%SDS-PAGE
 Lysate: 40 µg
 Lane 1-4: 293T cells
 K562 cells
 231 cells
 hela cells
 Primary antibody: TA350184 (MRPL39 Antibody)
 at dilution 1/600
 Secondary antibody: Goat anti rabbit IgG at
 1/8000 dilution
 Exposure time: 2 seconds



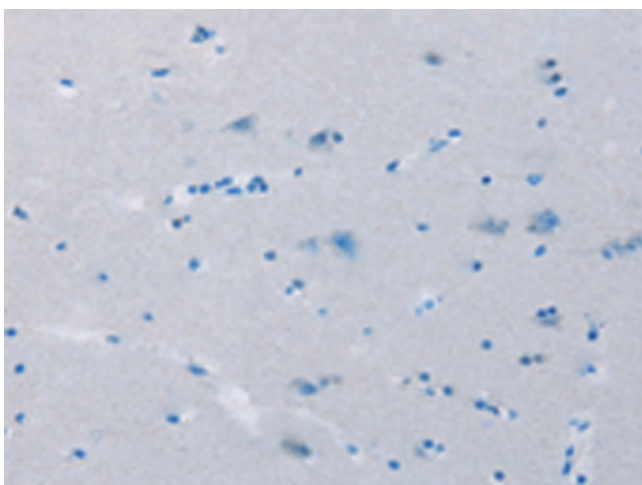
Immunohistochemistry of paraffin-embedded
 Human thyroid cancer tissue using TA350184
 (MRPL39 Antibody) at dilution 1/45 (Original
 magnification: ×200)



Immunohistochemistry of paraffin-embedded Human thyroid cancer tissue using TA350184 (MRPL39 Antibody) at dilution 1/45, treated with fusion protein. (Original magnification: ×200)



Immunohistochemistry of paraffin-embedded Human brain tissue using TA350184 (MRPL39 Antibody) at dilution 1/45 (Original magnification: ×200)



Immunohistochemistry of paraffin-embedded Human brain tissue using TA350184 (MRPL39 Antibody) at dilution 1/45, treated with fusion protein. (Original magnification: ×200)