

## Product datasheet for **TA350183S**

### MRPL28 Rabbit Polyclonal Antibody

#### Product data:

Product Type:	Primary Antibodies
Applications:	IHC, WB
Recommended Dilution:	WB: 1000-5000 WB positive control: 293T cells and human testis tissue, A375 cells and human normal kidney tissue IHC: 100-300 Positive control: Human thyroid cancer Predicted cell location: Cytoplasm
Reactivity:	Human, Mouse
Host:	Rabbit
Isotype:	IgG
Clonality:	Polyclonal
Immunogen:	Fusion protein of human MRPL28
Formulation:	pH7.4 PBS, 0.05% NaN <sub>3</sub> , 40% Glycerol
Purification:	Antigen affinity purification
Conjugation:	Unconjugated
Storage:	Store at -20°C as received.
Stability:	Stable for 12 months from date of receipt.
Predicted Protein Size:	30 kDa
Gene Name:	mitochondrial ribosomal protein L28
Database Link:	<a href="#">NP_006419</a> <a href="#">Entrez Gene 68611 Mouse</a> <a href="#">Entrez Gene 10573 Human</a> <a href="#">Q13084</a>



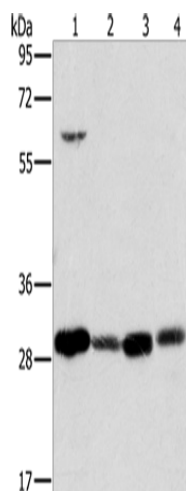
[View online »](#)

**Background:**

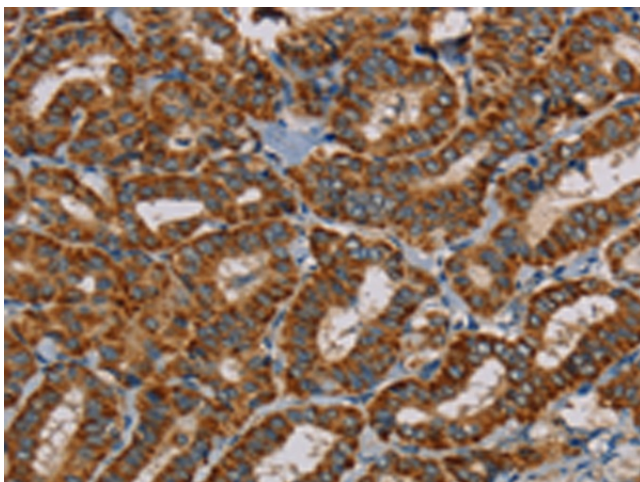
Mammalian mitochondrial ribosomal proteins are encoded by nuclear genes and help in protein synthesis within the mitochondrion. Mitochondrial ribosomes (mitoribosomes) consist of a small 28S subunit and a large 39S subunit. They have an estimated 75% protein to rRNA composition compared to prokaryotic ribosomes, where this ratio is reversed. Another difference between mammalian mitoribosomes and prokaryotic ribosomes is that the latter contain a 5S rRNA. Among different species, the proteins comprising the mitoribosome differ greatly in sequence, and sometimes in biochemical properties, which prevents easy recognition by sequence homology.

**Synonyms:**

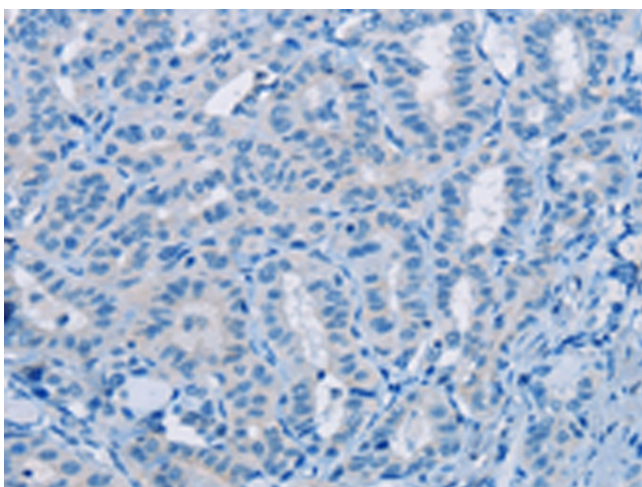
MAAT1; p15

**Product images:**


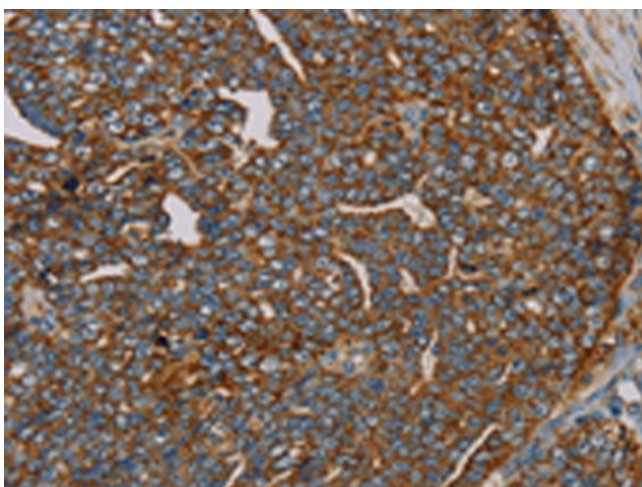
Gel: 8%SDS-PAGE  
Lysate: 40 µg  
Lane 1-4: 293T cells  
human testis tissue  
A375 cells  
human normal kidney tissue  
Primary antibody: [TA350183] (MRPL28 Antibody)  
at dilution 1/600  
Secondary antibody: Goat anti rabbit IgG at  
1/8000 dilution  
Exposure time: 2 seconds



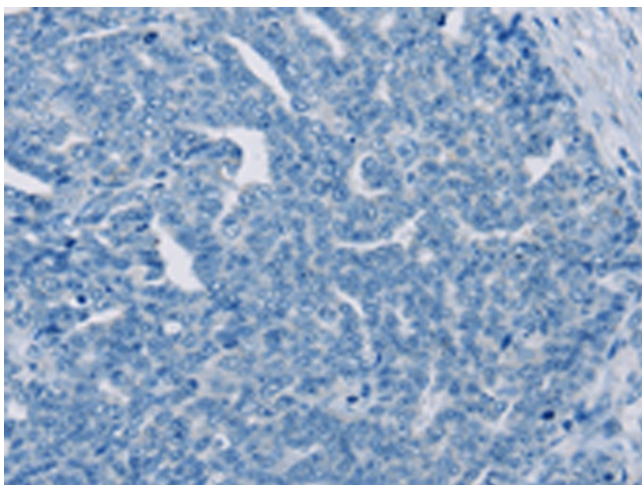
Immunohistochemistry of paraffin-embedded  
Human thyroid cancer tissue using [TA350183]  
(MRPL28 Antibody) at dilution 1/45 (Original  
magnification: x200)



Immunohistochemistry of paraffin-embedded Human thyroid cancer tissue using [TA350183] (MRPL28 Antibody) at dilution 1/45, treated with fusion protein. (Original magnification: ×200)



Immunohistochemistry of paraffin-embedded Human cervical cancer tissue using [TA350183] (MRPL28 Antibody) at dilution 1/45 (Original magnification: ×200)



Immunohistochemistry of paraffin-embedded Human cervical cancer tissue using [TA350183] (MRPL28 Antibody) at dilution 1/45, treated with fusion protein. (Original magnification: ×200)