

Product datasheet for **TA350181**

MRE11 Rabbit Polyclonal Antibody

Product data:

Product Type:	Primary Antibodies
Applications:	IHC, WB
Recommended Dilution:	WB: 500-2000 WB positive control: Raji and K562 cells IHC: 100-300 Positive control: Human colon cancer Predicted cell location: Nucleus
Reactivity:	Human, Mouse, Rat
Host:	Rabbit
Isotype:	IgG
Clonality:	Polyclonal
Immunogen:	Fusion protein of human MRE11A
Formulation:	pH7.4 PBS, 0.05% NaN ₃ , 40% Glycerol
Concentration:	lot specific
Purification:	Antigen affinity purification
Conjugation:	Unconjugated
Storage:	Store at -20°C as received.
Stability:	Stable for 12 months from date of receipt.
Predicted Protein Size:	81 kDa
Gene Name:	MRE11 homolog A, double strand break repair nuclease
Database Link:	NP_005581 Entrez Gene 17535 Mouse Entrez Gene 64046 Rat Entrez Gene 4361 Human P49959



[View online »](#)

Background:

This gene encodes a nuclear protein involved in homologous recombination, telomere length maintenance, and DNA double-strand break repair. By itself, the protein has 3' to 5' exonuclease activity and endonuclease activity. The protein forms a complex with the RAD50 homolog; this complex is required for nonhomologous joining of DNA ends and possesses increased single-stranded DNA endonuclease and 3' to 5' exonuclease activities. In conjunction with a DNA ligase, this protein promotes the joining of noncomplementary ends in vitro using short homologies near the ends of the DNA fragments. This gene has a pseudogene on chromosome 3. Alternative splicing of this gene results in two transcript variants encoding different isoforms.

Synonyms:

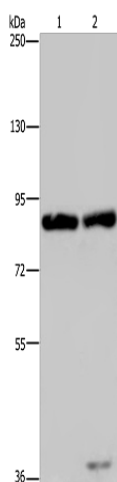
ATLD; HNGS1; MRE11; MRE11B

Protein Families:

Druggable Genome, Stem cell - Pluripotency

Protein Pathways:

Homologous recombination, Non-homologous end-joining

Product images:

Gel: 6%SDS-PAGE

Lysate: 40 µg

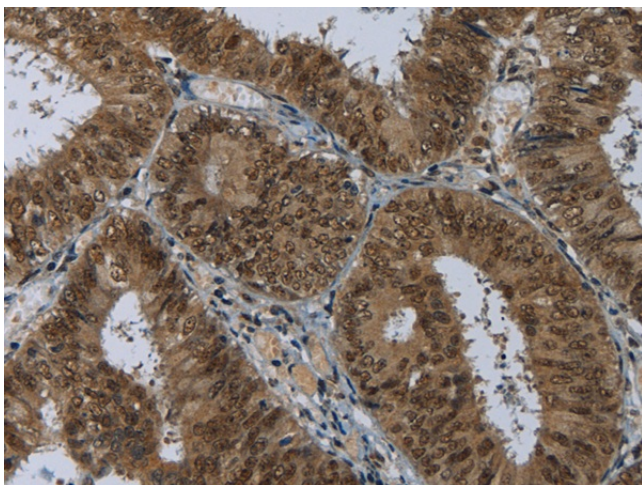
Lane 1-2: Raji cells

K562 cells

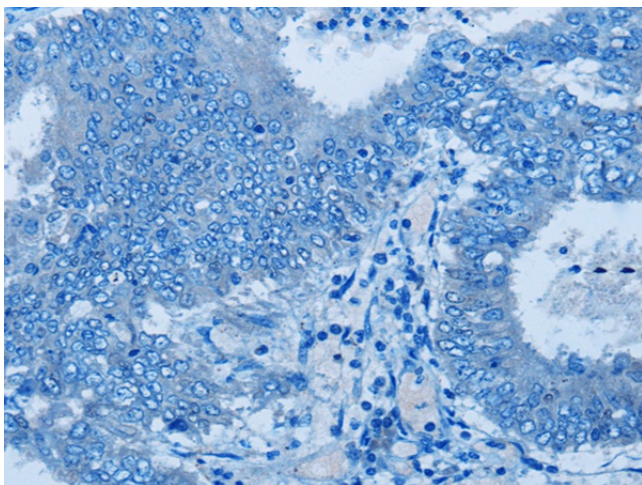
Primary antibody: TA350181 (MRE11 Antibody) at dilution 1/500

Secondary antibody: Goat anti rabbit IgG at 1/8000 dilution

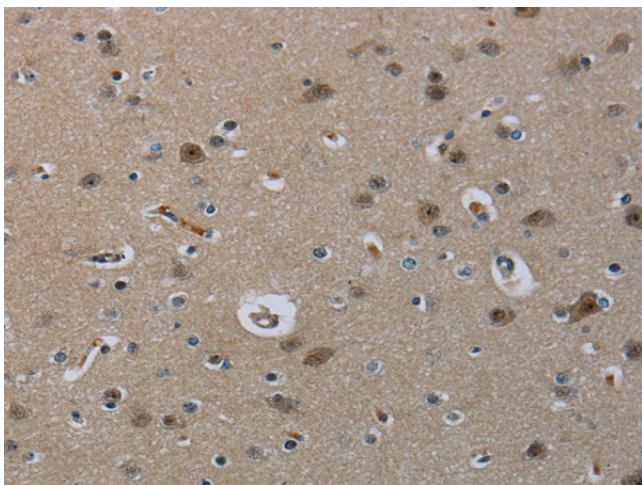
Exposure time: 10 minutes



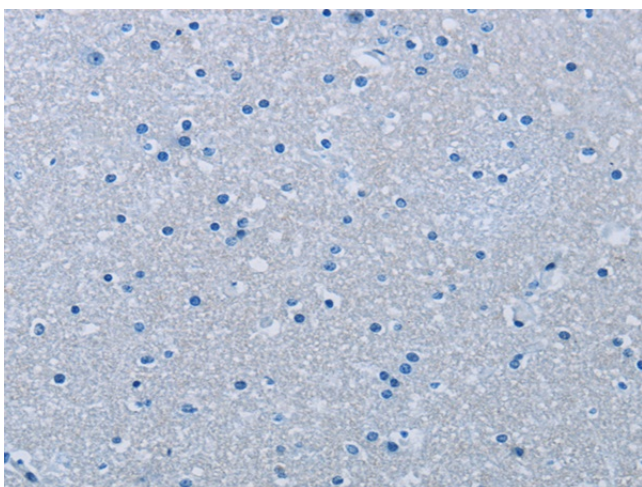
Immunohistochemistry of paraffin-embedded Human colon cancer tissue using TA350181 (MRE11 Antibody) at dilution 1/60 (Original magnification: x200)



Immunohistochemistry of paraffin-embedded Human colon cancer tissue using TA350181 (MRE11 Antibody) at dilution 1/60, treated with fusion protein. (Original magnification: x200)



Immunohistochemistry of paraffin-embedded Human brain tissue using TA350181 (MRE11 Antibody) at dilution 1/60 (Original magnification: x200)



Immunohistochemistry of paraffin-embedded Human brain tissue using TA350181 (MRE11 Antibody) at dilution 1/60, treated with fusion protein. (Original magnification: $\times 200$)