

Product datasheet for **TA350177**

Mimitin (NDUFAF2) Rabbit Polyclonal Antibody

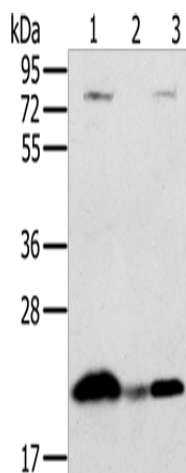
Product data:

Product Type:	Primary Antibodies
Applications:	WB
Recommended Dilution:	WB: 500-2000 WB positive control: Raji cells and human liver cancer tissue, hela cells
Reactivity:	Human, Mouse
Host:	Rabbit
Isotype:	IgG
Clonality:	Polyclonal
Immunogen:	Fusion protein of human NDUFAF2
Formulation:	pH7.4 PBS, 0.05% NaN ₃ , 40% Glycerol
Concentration:	lot specific
Purification:	Antigen affinity purification
Conjugation:	Unconjugated
Storage:	Store at -20°C as received.
Stability:	Stable for 12 months from date of receipt.
Predicted Protein Size:	20 kDa
Gene Name:	NADH:ubiquinone oxidoreductase complex assembly factor 2
Database Link:	NP_777549 Entrez Gene 75597 Mouse Entrez Gene 91942 Human Q8N183
Background:	NADH:ubiquinone oxidoreductase (complex I) catalyzes the transfer of electrons from NADH to ubiquinone (coenzyme Q) in the first step of the mitochondrial respiratory chain, resulting in the translocation of protons across the inner mitochondrial membrane. This gene encodes a complex I assembly factor. Mutations in this gene cause progressive encephalopathy resulting from mitochondrial complex I deficiency.
Synonyms:	B17.2L; mimitin; MMTN; NDUFA12L



[View online »](#)

Product images:



Gel: 10%SDS-PAGE
Lysate: 40 μ g
Lane 1-3: Raji cells
human liver cancer tissue
hela cells
Primary antibody: TA350177 (NDUFAF2 Antibody)
at dilution 1/250
Secondary antibody: Goat anti rabbit IgG at
1/8000 dilution
Exposure time: 10 seconds