

## Product datasheet for **TA350173**

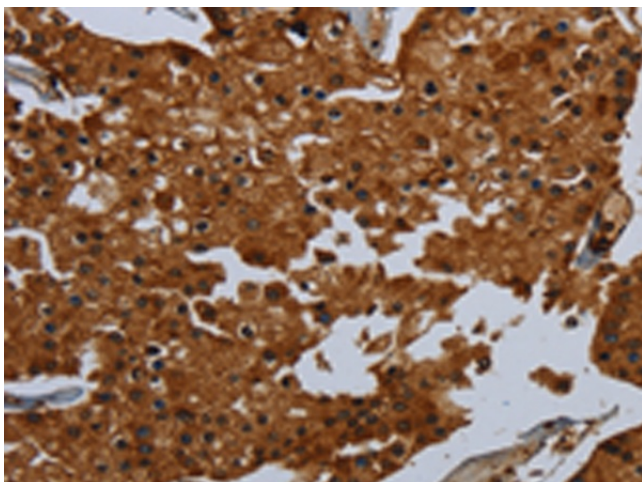
### ENTPD7 Rabbit Polyclonal Antibody

#### Product data:

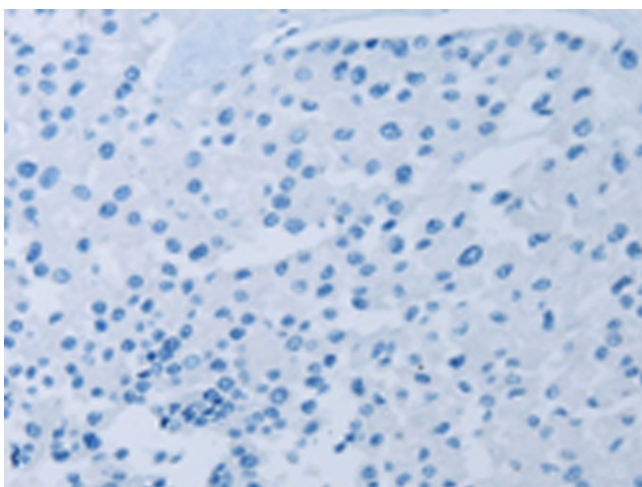
Product Type:	Primary Antibodies
Applications:	IHC
Recommended Dilution:	IHC: 50-200 Positive control: Human prostate cancer Predicted cell location: Cytoplasm
Reactivity:	Human, Mouse
Host:	Rabbit
Isotype:	IgG
Clonality:	Polyclonal
Immunogen:	Fusion protein of human ENTPD7
Formulation:	pH7.4 PBS, 0.05% NaN <sub>3</sub> , 40% Glycerol
Concentration:	lot specific
Purification:	Antigen affinity purification
Conjugation:	Unconjugated
Storage:	Store at -20°C as received.
Stability:	Stable for 12 months from date of receipt.
Gene Name:	ectonucleoside triphosphate diphosphohydrolase 7
Database Link:	<a href="#">NP_065087</a> <a href="#">Entrez Gene 93685 Mouse</a> <a href="#">Entrez Gene 57089 Human</a> <a href="#">Q9NQZ7</a>
Background:	LALP1 (lysosomal apyrase-like protein 1), also known as ENTPD7 (ectonucleoside triphosphate diphosphohydrolase 7), is a 604 amino acid multi-pass membrane protein that belongs to the GDA1/CD39 NTPase family. Preferentially hydrolyzing nucleoside 5'-triphosphates, LALP1 and has an order of activity with respect to possible substrates, which is UTP > GTP > CTP.
Synonyms:	LALP1
Protein Families:	Transmembrane



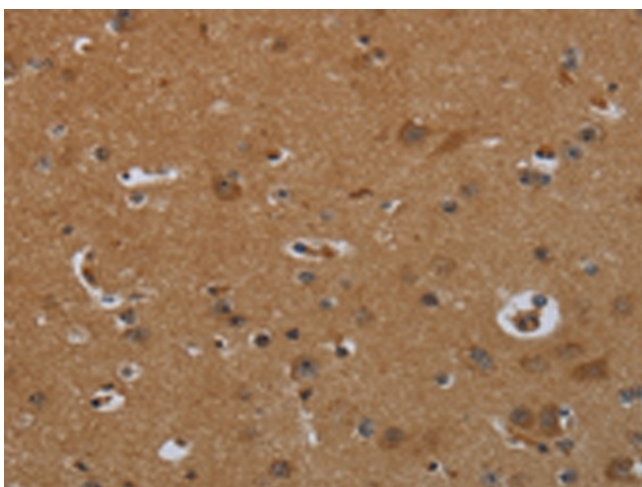
[View online »](#)

**Product images:**

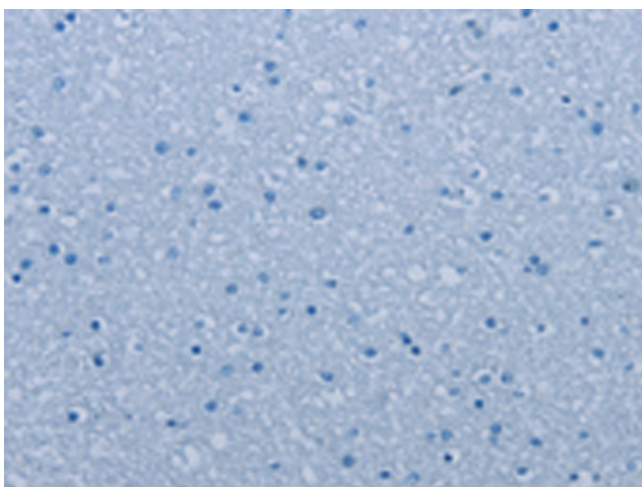
Immunohistochemistry of paraffin-embedded Human prostate cancer tissue using TA350173 (ENTPD7 Antibody) at dilution 1/60 (Original magnification:  $\times 200$ )



Immunohistochemistry of paraffin-embedded Human prostate cancer tissue using TA350173 (ENTPD7 Antibody) at dilution 1/60, treated with fusion protein. (Original magnification:  $\times 200$ )



Immunohistochemistry of paraffin-embedded Human brain tissue using TA350173 (ENTPD7 Antibody) at dilution 1/60 (Original magnification: ×200)



Immunohistochemistry of paraffin-embedded Human brain tissue using TA350173 (ENTPD7 Antibody) at dilution 1/60, treated with fusion protein. (Original magnification: ×200)