

Product datasheet for **TA350171**

REG3G Rabbit Polyclonal Antibody

Product data:

Product Type:	Primary Antibodies
Applications:	IHC, WB
Recommended Dilution:	WB: 500-2000 WB positive control: Mouse pancreas tissue IHC: 100-300 Positive control: Human colon cancer Predicted cell location: Cytoplasm
Reactivity:	Human, Mouse
Host:	Rabbit
Isotype:	IgG
Clonality:	Polyclonal
Immunogen:	Fusion protein of human REG3G
Formulation:	pH7.4 PBS, 0.05% NaN ₃ , 40% Glycerol
Concentration:	lot specific
Purification:	Antigen affinity purification
Conjugation:	Unconjugated
Storage:	Store at -20°C as received.
Stability:	Stable for 12 months from date of receipt.
Predicted Protein Size:	19 kDa
Gene Name:	regenerating family member 3 gamma
Database Link:	NP_940850 Entrez Gene 130120 Human Q6UW15

Background: This gene encodes a member of the regenerating islet-derived genes (REG)3 protein family. These proteins are secreted, C-type lectins with a carbohydrate recognition domain and N-terminal signal peptide. The protein encoded by this gene is an antibacterial lectin with activity against Gram-positive bacteria. Alternative splicing results in multiple transcript variants encoding multiple isoforms.



[View online »](#)

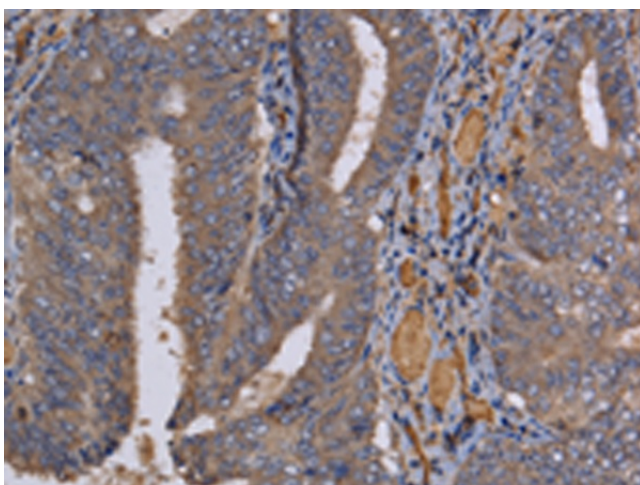
Synonyms: LPPM429; PAP-1B; PAP1B; PAP IB; PAPIB; REG-III; REG III; UNQ429

Protein Families: Secreted Protein

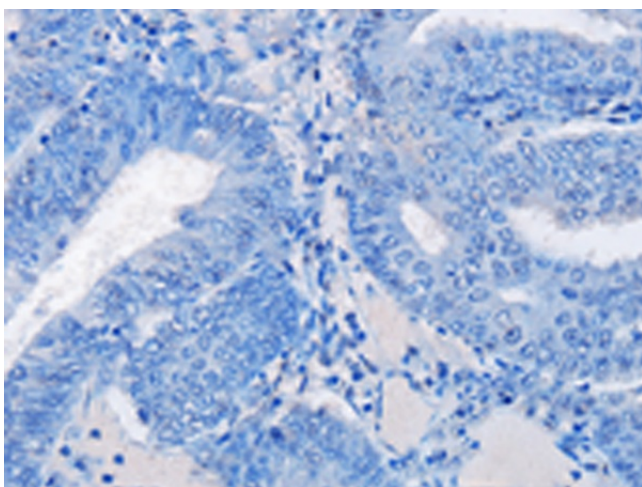
Product images:



Gel: 10%SDS-PAGE
Lysate: 40 μ g
Lane: Mouse pancreas tissue
Primary antibody: TA350171 (REG3G Antibody) at dilution 1/400
Secondary antibody: Goat anti rabbit IgG at 1/8000 dilution
Exposure time: 40 seconds



Immunohistochemistry of paraffin-embedded Human colon cancer tissue using TA350171 (REG3G Antibody) at dilution 1/60 (Original magnification: \times 200)



Immunohistochemistry of paraffin-embedded Human colon cancer tissue using TA350171 (REG3G Antibody) at dilution 1/60, treated with fusion protein. (Original magnification: ×200)