

Product datasheet for **TA350170**

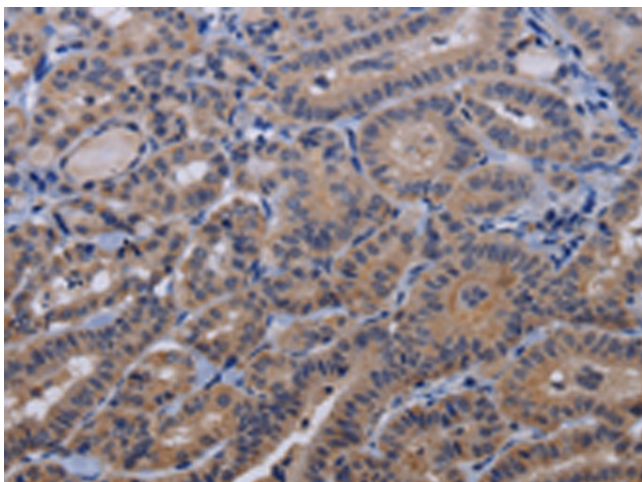
TRPM8 Rabbit Polyclonal Antibody

Product data:

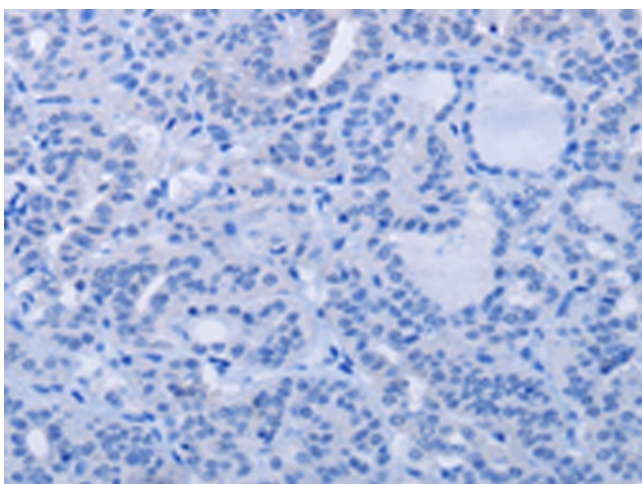
Product Type:	Primary Antibodies
Applications:	IHC
Recommended Dilution:	IHC: 25-100 Positive control: Human thyroid cancer Predicted cell location: Cytoplasm
Reactivity:	Human, Mouse, Rat
Host:	Rabbit
Isotype:	IgG
Clonality:	Polyclonal
Immunogen:	Fusion protein of human TRPM8
Formulation:	pH7.4 PBS, 0.05% NaN ₃ , 40% Glycerol
Concentration:	lot specific
Purification:	Antigen affinity purification
Conjugation:	Unconjugated
Storage:	Store at -20°C as received.
Stability:	Stable for 12 months from date of receipt.
Gene Name:	transient receptor potential cation channel subfamily M member 8
Database Link:	NP_076985 Entrez Gene 171382 Mouse Entrez Gene 171384 Rat Entrez Gene 79054 Human Q7Z2W7
Background:	Transient receptor potential ion channels (TRPC) are a superfamily of six transmembrane segment-spanning gated cation channels. TRP subtypes mediate store-operated Ca ²⁺ entry, a process involving Ca ²⁺ influx and replenishment of Ca ²⁺ stores formerly emptied through the action of inositol 1,4,5-trisphosphate production and other Ca ²⁺ mobilizing agents.
Synonyms:	LTRPC6; TRPP8
Protein Families:	Druggable Genome, Ion Channels: Transient receptor potential, Transmembrane



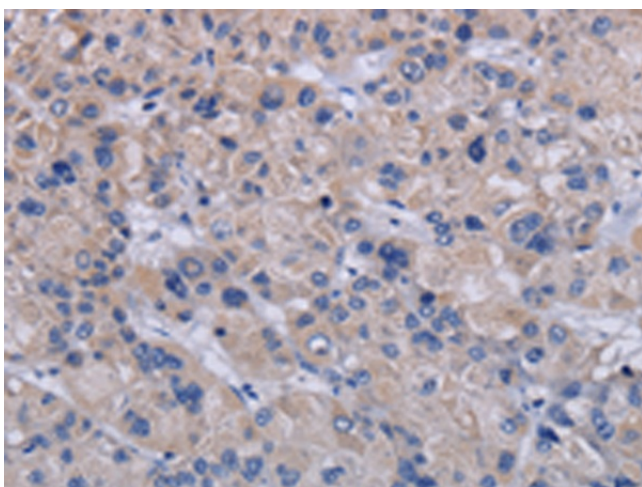
[View online »](#)

Product images:

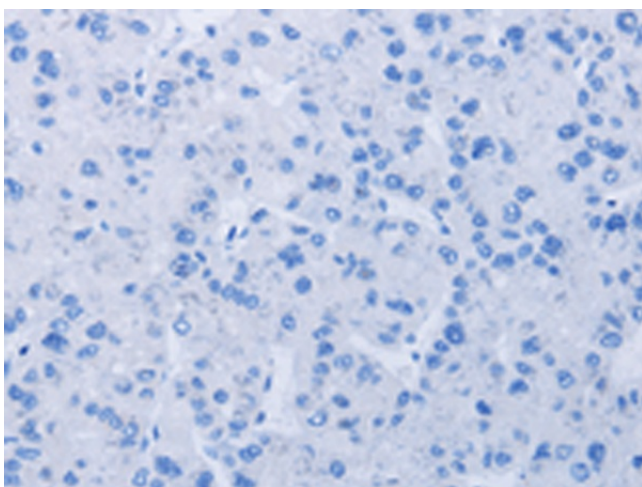
Immunohistochemistry of paraffin-embedded Human thyroid cancer tissue using TA350170 (TRPM8 Antibody) at dilution 1/30 (Original magnification: $\times 200$)



Immunohistochemistry of paraffin-embedded Human thyroid cancer tissue using TA350170 (TRPM8 Antibody) at dilution 1/30, treated with fusion protein. (Original magnification: $\times 200$)



Immunohistochemistry of paraffin-embedded Human liver cancer tissue using TA350170 (TRPM8 Antibody) at dilution 1/30 (Original magnification: $\times 200$)



Immunohistochemistry of paraffin-embedded Human liver cancer tissue using TA350170 (TRPM8 Antibody) at dilution 1/30, treated with fusion protein. (Original magnification: $\times 200$)