

## Product datasheet for **TA350165**

### Meprin alpha (MEP1A) Rabbit Polyclonal Antibody

#### Product data:

Product Type:	Primary Antibodies
Applications:	WB
Recommended Dilution:	WB: 200-1000 WB positive control: Human rectum carcinoma tissue
Reactivity:	Human, Rat
Host:	Rabbit
Isotype:	IgG
Clonality:	Polyclonal
Immunogen:	Fusion protein of human MEP1A
Formulation:	pH7.4 PBS, 0.05% NaN <sub>3</sub> , 40% Glycerol
Concentration:	lot specific
Purification:	Antigen affinity purification
Conjugation:	Unconjugated
Storage:	Store at -20°C as received.
Stability:	Stable for 12 months from date of receipt.
Predicted Protein Size:	84 kDa
Gene Name:	meprin A subunit alpha
Database Link:	<a href="#">NP_005579</a> <a href="#">Entrez Gene 4224 Human</a> <a href="#">Q16819</a>

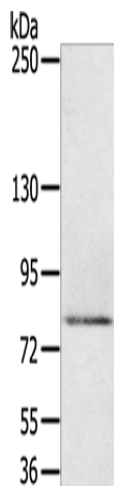
**Background:** Meprin A subunit alpha also known as endopeptidase-2 or PABA peptide hydrolase is the alpha subunit of the meprin A enzyme that in humans is encoded by the MEP1A gene.[1] [2]The MEP1A locus is on chromosome 6p in humans and on chromosome 17 in mice. The meprin alpha subunit product of the MEP1A gene is processed in the endoplasmic reticulum during intracellular transport, and is secreted as homomeric meprin A.

**Synonyms:** PPHA  
**Protein Families:** Druggable Genome, Protease, Transmembrane



[View online »](#)

## Product images:



Gel: 6%SDS-PAGE

Lysate: 40  $\mu$ g

Lane: Human rectum carcinoma tissue

Primary antibody: TA350165 (MEP1A Antibody) at dilution 1/200

Secondary antibody: Goat anti rabbit IgG at 1/8000 dilution

Exposure time: 3 minutes