

## Product datasheet for **TA350164**

### MEI1 Rabbit Polyclonal Antibody

#### Product data:

Product Type:	Primary Antibodies
Applications:	IHC
Recommended Dilution:	IHC: 25-100 Positive control: Human thyroid cancer Predicted cell location: Cytoplasm
Reactivity:	Human
Host:	Rabbit
Isotype:	IgG
Clonality:	Polyclonal
Immunogen:	Fusion protein of human MEI1
Formulation:	pH7.4 PBS, 0.05% NaN <sub>3</sub> , 40% Glycerol
Concentration:	lot specific
Purification:	Antigen affinity purification
Conjugation:	Unconjugated
Storage:	Store at -20°C as received.
Stability:	Stable for 12 months from date of receipt.
Gene Name:	meiotic double-stranded break formation protein 1
Database Link:	<a href="#">NP_689726</a> <a href="#">Entrez Gene 150365 Human</a> <a href="#">Q5TIA1</a>



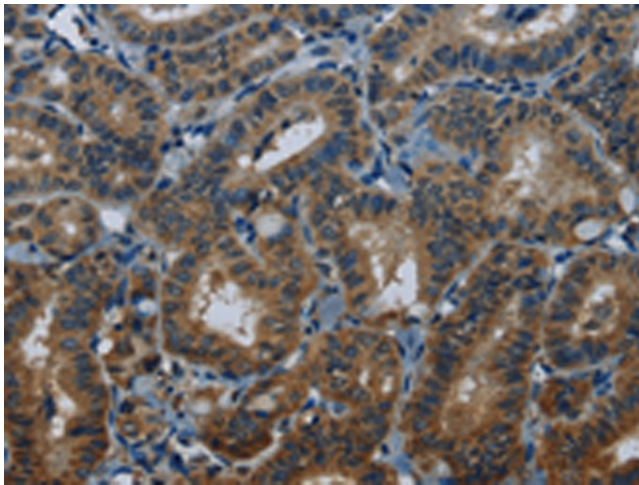
[View online »](#)

**Background:**

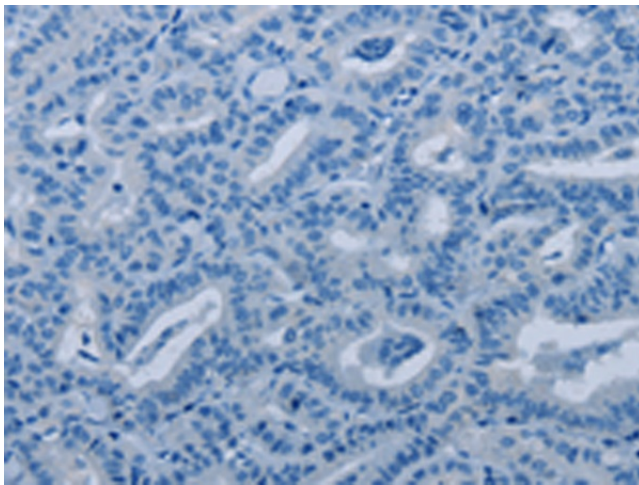
The predominant cause of spermatogenic arrest of meiosis is the failure of homologous chromosomes to accurately synapse. MEI1 (Meiosis inhibitor protein 1), also designated Meiosis defective protein 1, is a 1274 amino acid protein that is likely required for the formation of genetically programmed double-strand breaks, the first step in the initiation of meiosis. With predominant expression in testis, it is likely that defects of the gene encoding MEI1 results in male infertility. Interestingly, studies show that genetic variation in the MEI gene possibly predisposes European Americans but not Israeli men to infertility by meiotic arrest. Human MEI1 shares 79% sequence similarity with its mouse homolog. There are seven isoforms of MEI1 that are produced as a result of alternative splicing events.

**Synonyms:**

SPATA38

**Product images:**


Immunohistochemistry of paraffin-embedded Human thyroid cancer tissue using TA350164 (MEI1 Antibody) at dilution 1/20 (Original magnification: ×200)



Immunohistochemistry of paraffin-embedded Human thyroid cancer tissue using TA350164 (MEI1 Antibody) at dilution 1/20, treated with fusion protein. (Original magnification: ×200)