

Product datasheet for **TA350162**

Rabbit Monoclonal Antibody

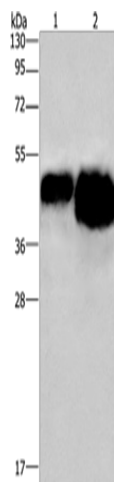
Product data:

Product Type:	Primary Antibodies
Applications:	WB
Recommended Dilution:	WB: 500-2000 WB positive control: OVAL protein
Reactivity:	Chicken
Host:	Rabbit
Isotype:	IgG
Clonality:	Monoclonal
Immunogen:	Fusion protein of Chicken OVAL
Formulation:	pH7.4 PBS, 0.05% NaN ₃ , 40% Glycerol
Concentration:	lot specific
Purification:	Antigen affinity purification
Conjugation:	Unconjugated
Storage:	Store at -20°C as received.
Stability:	Stable for 12 months from date of receipt.
Predicted Protein Size:	43 kDa
Background:	Ovalbumin (abbreviated OVA) is the main protein found in egg white, making up 60-65% of the total protein. Ovalbumin displays sequence and three-dimensional homology to the serpin superfamily, but unlike most serpins it is not a serine protease inhibitor. It is presumed to be a storage protein.



[View online »](#)

Product images:



Gel: 10%SDS-PAGE
Lysate: 0.4 μ g
0.8 μ g
Lane 1-2: 0.4 μ g
0.8 μ g OVAL protein
Primary antibody: TA350162 (OVAL Antibody) at
dilution 1/500
Secondary antibody: Goat anti rabbit IgG at
1/8000 dilution
Exposure time: 3 seconds