

Product datasheet for **TA350161**

MDH1 Rabbit Polyclonal Antibody

Product data:

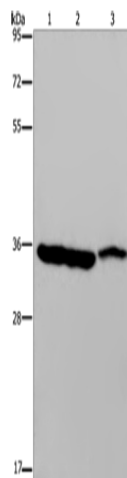
Product Type:	Primary Antibodies
Applications:	WB
Recommended Dilution:	WB: 500-2000 WB positive control: Mouse heart, liver and stomach tissue
Reactivity:	Human, Mouse, Rat
Host:	Rabbit
Isotype:	IgG
Clonality:	Polyclonal
Immunogen:	Fusion protein of human MDH1
Formulation:	pH7.4 PBS, 0.05% NaN ₃ , 40% Glycerol
Concentration:	lot specific
Purification:	Antigen affinity purification
Conjugation:	Unconjugated
Storage:	Store at -20°C as received.
Stability:	Stable for 12 months from date of receipt.
Predicted Protein Size:	36 kDa
Gene Name:	malate dehydrogenase 1
Database Link:	NP_005908 Entrez Gene 17449 MouseEntrez Gene 24551 RatEntrez Gene 4190 Human P40925
Background:	Malate dehydrogenase catalyzes the reversible oxidation of malate to oxaloacetate, utilizing the NAD/NADH cofactor system in the citric acid cycle. The protein encoded by this gene is localized to the cytoplasm and may play pivotal roles in the malate-aspartate shuttle that operates in the metabolic coordination between cytosol and mitochondria. Alternatively spliced transcript variants encoding distinct isoforms have been found for this gene.
Synonyms:	HEL-S-32; MDH-s; MDHA; MGC:1375; MOR2
Protein Families:	Druggable Genome



[View online »](#)

Protein Pathways: Citrate cycle (TCA cycle), Glyoxylate and dicarboxylate metabolism, Metabolic pathways, Pyruvate metabolism

Product images:



Gel: 8%SDS-PAGE
Lysate: 40 μ g
Lane 1-3: Mouse heart tissue
Mouse liver tissue
Mouse stomach tissue
Primary antibody: TA350161 (MDH1 Antibody) at dilution 1/500
Secondary antibody: Goat anti rabbit IgG at 1/8000 dilution
Exposure time: 3 seconds