

## Product datasheet for **TA350160**

### Malignant T cell amplified sequence 1 (MCTS1) Rabbit Polyclonal Antibody

#### Product data:

Product Type:	Primary Antibodies
Applications:	IHC, WB
Recommended Dilution:	WB: 200-1000 WB positive control: Jurkat and PC3 cells IHC: 100-300 Positive control: Human thyroid cancer Predicted cell location: Cytoplasm or Nucleus
Reactivity:	Human
Host:	Rabbit
Isotype:	IgG
Clonality:	Polyclonal
Immunogen:	Fusion protein of human MCTS1
Formulation:	pH7.4 PBS, 0.05% NaN <sub>3</sub> , 40% Glycerol
Concentration:	lot specific
Purification:	Antigen affinity purification
Conjugation:	Unconjugated
Storage:	Store at -20°C as received.
Stability:	Stable for 12 months from date of receipt.
Predicted Protein Size:	21 kDa
Gene Name:	malignant T-cell amplified sequence 1
Database Link:	<a href="#">NP_054779</a> <a href="#">Entrez Gene 28985 Human</a> <a href="#">Q9ULC4</a>



[View online »](#)

**Background:**

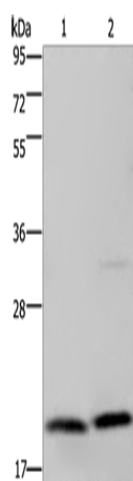
MCTS1 (malignant T cell amplified sequence 1), also known as MCT1, is a 181 amino acid protein that is ubiquitously expressed and localizes to the cytoplasm of cells. MCTS1 may play a role in cell cycle regulation by decreasing cell doubling time and by shortening the duration of G1 transit time and G1/S transition. The protein level of Cdk4 and Cdk6 kinases activity and cyclin D1 is enhanced by expression of MCTS1. As a translation enhancer, MCTS1 recruits DENR and binds to the cap complex of the 5'-terminus of mRNAs, subsequently altering the mRNA translation profile. MCTS1 promotes lymphoid tumor development and contributes to the pathogenesis and progression of breast cancer. MCTS1 positively regulates phosphorylation of ERK1 and ERK2.

**Synonyms:**

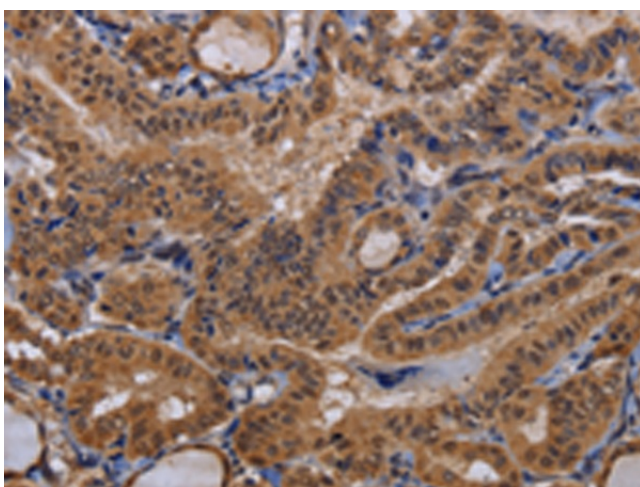
MCT-1; MCT1

**Protein Families:**

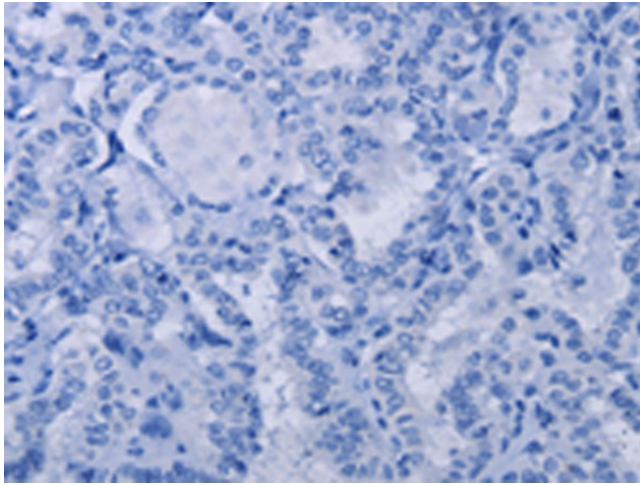
Druggable Genome

**Product images:**

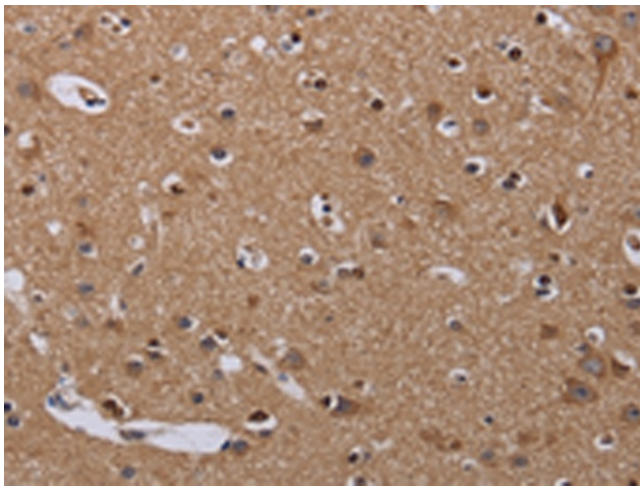
Gel: 10%SDS-PAGE  
Lysate: 40 µg  
Lane 1-2: Jurkat cells  
PC3 cells  
Primary antibody: TA350160 (MCTS1 Antibody) at dilution 1/200  
Secondary antibody: Goat anti rabbit IgG at 1/8000 dilution  
Exposure time: 1 minute



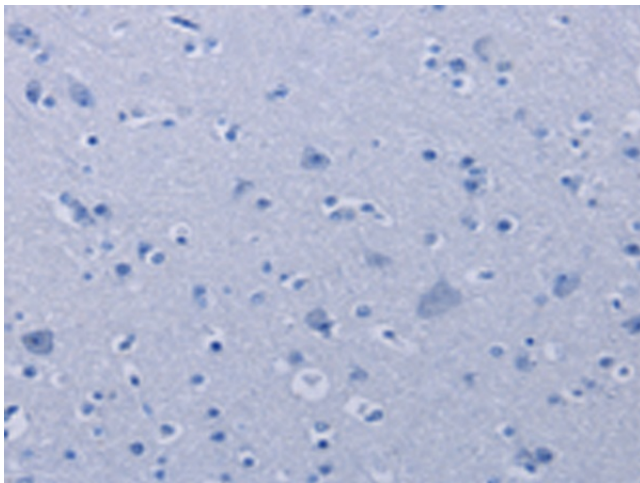
Immunohistochemistry of paraffin-embedded Human thyroid cancer tissue using TA350160 (MCTS1 Antibody) at dilution 1/60 (Original magnification: ×200)



Immunohistochemistry of paraffin-embedded Human thyroid cancer tissue using TA350160 (MCTS1 Antibody) at dilution 1/60, treated with fusion protein. (Original magnification: ×200)



Immunohistochemistry of paraffin-embedded Human brain tissue using TA350160 (MCTS1 Antibody) at dilution 1/60 (Original magnification: ×200)



Immunohistochemistry of paraffin-embedded Human brain tissue using TA350160 (MCTS1 Antibody) at dilution 1/60, treated with fusion protein. (Original magnification: ×200)