

## Product datasheet for **TA350159**

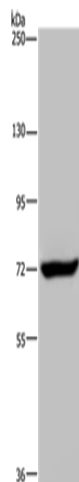
### **MCPIP1 (ZC3H12A) Rabbit Polyclonal Antibody**

#### **Product data:**

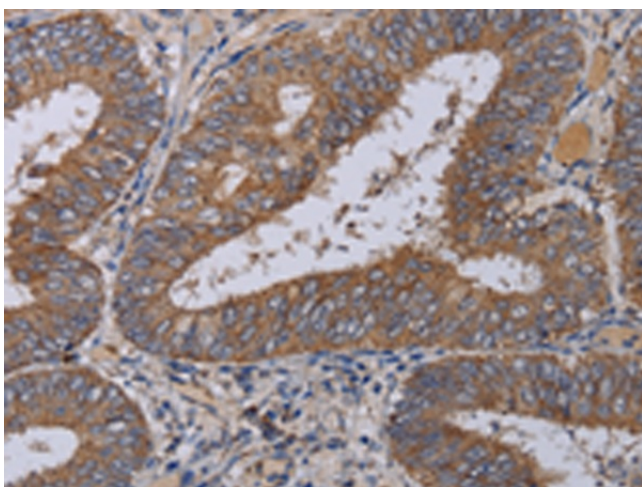
<b>Product Type:</b>	Primary Antibodies
<b>Applications:</b>	IHC, WB
<b>Recommended Dilution:</b>	WB: 500-2000 WB positive control: K562 cells IHC: 50-200 Positive control: Human colon cancer Predicted cell location: Cytoplasm
<b>Reactivity:</b>	Human
<b>Host:</b>	Rabbit
<b>Isotype:</b>	IgG
<b>Clonality:</b>	Polyclonal
<b>Immunogen:</b>	Fusion protein of human ZC3H12A
<b>Formulation:</b>	pH7.4 PBS, 0.05% NaN <sub>3</sub> , 40% Glycerol
<b>Concentration:</b>	lot specific
<b>Purification:</b>	Antigen affinity purification
<b>Conjugation:</b>	Unconjugated
<b>Storage:</b>	Store at -20°C as received.
<b>Stability:</b>	Stable for 12 months from date of receipt.
<b>Predicted Protein Size:</b>	66 kDa
<b>Gene Name:</b>	zinc finger CCCH-type containing 12A
<b>Database Link:</b>	<a href="#">NP_079355</a> <a href="#">Entrez Gene 80149 Human</a> <a href="#">Q5D1E8</a>
<b>Background:</b>	ZC3H12A is an MCP1 (CCL2; MIM 158105)-induced protein that acts as a transcriptional activator and causes cell death of cardiomyocytes, possibly via induction of genes associated with apoptosis.
<b>Synonyms:</b>	dj423B22.1; MCPIP; MCPIP1



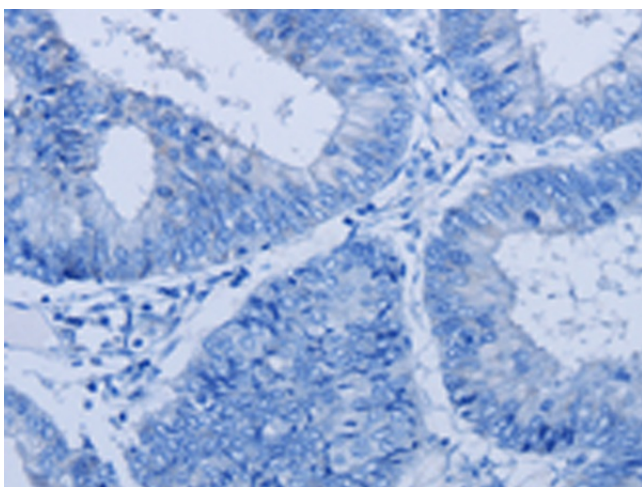
[View online »](#)

**Product images:**

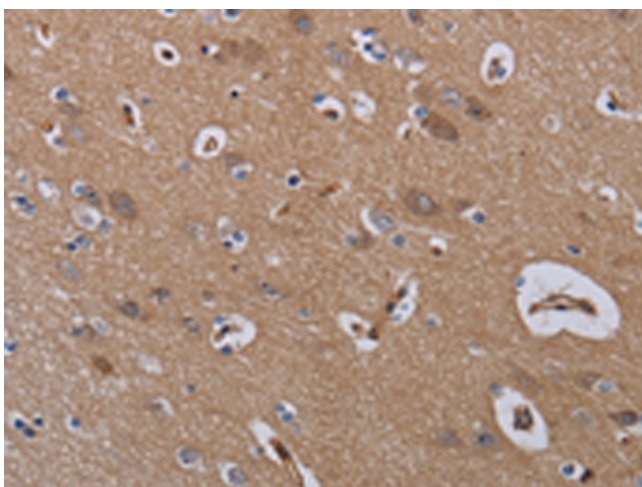
Gel: 6%SDS-PAGE  
Lysate: 40 µg  
Lane: K562 cells  
Primary antibody: TA350159 (ZC3H12A Antibody)  
at dilution 1/200  
Secondary antibody: Goat anti rabbit IgG at  
1/8000 dilution  
Exposure time: 20 seconds



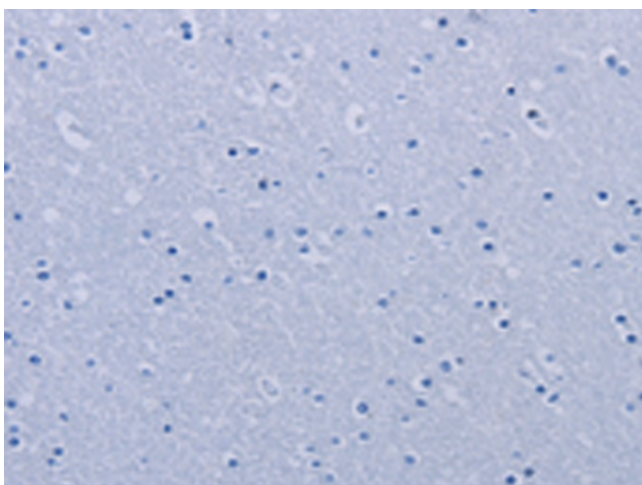
Immunohistochemistry of paraffin-embedded  
Human colon cancer tissue using TA350159  
(ZC3H12A Antibody) at dilution 1/40 (Original  
magnification: ×200)



Immunohistochemistry of paraffin-embedded Human colon cancer tissue using TA350159 (ZC3H12A Antibody) at dilution 1/40, treated with fusion protein. (Original magnification: ×200)



Immunohistochemistry of paraffin-embedded Human brain tissue using TA350159 (ZC3H12A Antibody) at dilution 1/40 (Original magnification: ×200)



Immunohistochemistry of paraffin-embedded Human brain tissue using TA350159 (ZC3H12A Antibody) at dilution 1/40, treated with fusion protein. (Original magnification: ×200)