

Product datasheet for **TA350157S**

Matrin 3 (MATR3) Rabbit Polyclonal Antibody

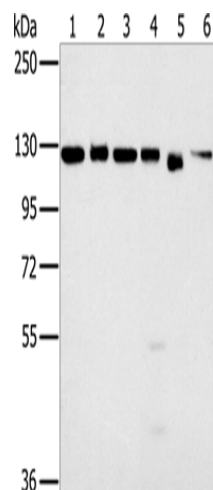
Product data:

Product Type:	Primary Antibodies
Applications:	WB
Recommended Dilution:	WB: 500-2000 WB positive control: 293T, K562, hela, 231, Jurkat and NIH/3T3 cells
Reactivity:	Human, Mouse
Host:	Rabbit
Isotype:	IgG
Clonality:	Polyclonal
Immunogen:	Fusion protein of human MATR3
Formulation:	pH7.4 PBS, 0.05% NaN ₃ , 40% Glycerol
Purification:	Antigen affinity purification
Conjugation:	Unconjugated
Storage:	Store at -20°C as received.
Stability:	Stable for 12 months from date of receipt.
Predicted Protein Size:	95 kDa
Gene Name:	matrin 3
Database Link:	NP_954659 Entrez Gene 17184 Mouse Entrez Gene 9782 Human P43243
Background:	This gene encodes a nuclear matrix protein, which is proposed to stabilize certain messenger RNA species. Mutations of this gene are associated with distal myopathy 2, which often includes vocal cord and pharyngeal weakness. Alternatively spliced transcript variants, including read-through transcripts composed of the upstream small nucleolar RNA host gene 4 (non-protein coding) and matrin 3 gene sequence, have been identified. Pseudogenes of this gene are located on chromosomes 1 and X.
Synonyms:	ALS21; MPD2; VCPDM



[View online »](#)

Product images:



Gel: 6%SDS-PAGE

Lysate: 40 μ g

Lane 1-6: 293T cells

K562 cells

hela cells

231 cells

Jurkat cells

NIH/3T3 cells

Primary antibody: [TA350157] (MATR3 Antibody)
at dilution 1/500

Secondary antibody: Goat anti rabbit IgG at
1/8000 dilution

Exposure time: 3 seconds