

Product datasheet for **TA350153S**

TAB3 Rabbit Polyclonal Antibody

Product data:

Product Type:	Primary Antibodies
Applications:	IHC, WB
Recommended Dilution:	WB: 1000-5000 WB positive control: 293T, Raw264.7, NIH/3T3, K562 and Jurkat cells IHC: 50-200 Positive control: Human thyroid cancer Predicted cell location: Cytoplasm
Reactivity:	Human, Mouse
Host:	Rabbit
Isotype:	IgG
Clonality:	Polyclonal
Immunogen:	Fusion protein of human TAB3
Formulation:	pH7.4 PBS, 0.05% NaN ₃ , 40% Glycerol
Purification:	Antigen affinity purification
Conjugation:	Unconjugated
Storage:	Store at -20°C as received.
Stability:	Stable for 12 months from date of receipt.
Predicted Protein Size:	79 kDa
Gene Name:	TGF-beta activated kinase 1/MAP3K7 binding protein 3
Database Link:	NP_690000 Entrez Gene 66724 Mouse Entrez Gene 257397 Human Q8N5C8

Background: The product of this gene functions in the NF-kappaB signal transduction pathway. The encoded protein, and the similar and functionally redundant protein MAP3K7IP2/TAB2, forms a ternary complex with the protein kinase MAP3K7/TAK1 and either TRAF2 or TRAF6 in response to stimulation with the pro-inflammatory cytokines TNF or IL-1. Subsequent MAP3K7/TAK1 kinase activity triggers a signaling cascade leading to activation of the NF-kappaB transcription factor. The human genome contains a related pseudogene.



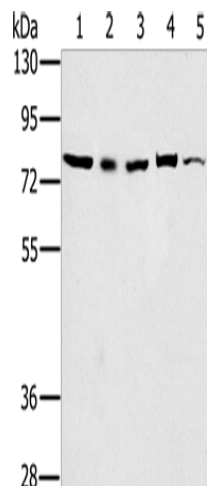
[View online »](#)

Synonyms: MAP3K7IP3; NAP1

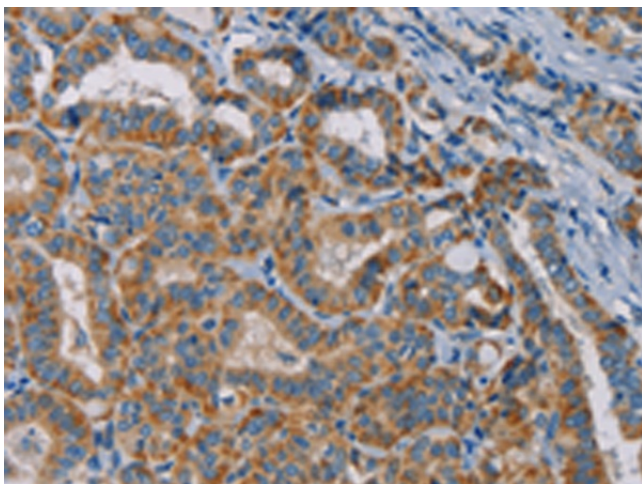
Protein Families: Druggable Genome

Protein Pathways: NOD-like receptor signaling pathway

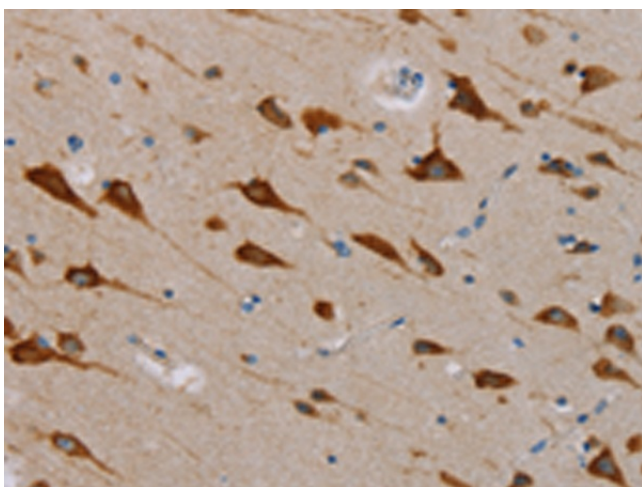
Product images:



Gel: 6%SDS-PAGE
Lysate: 40 µg
Lane 1-5: 293T cells
Raw264.7 cells
NIH/3T3 cells
K562 cells
Jurkat cells
Primary antibody: [TA350153] (TAB3 Antibody) at dilution 1/800
Secondary antibody: Goat anti rabbit IgG at 1/8000 dilution
Exposure time: 10 seconds



Immunohistochemistry of paraffin-embedded Human thyroid cancer tissue using [TA350153] (TAB3 Antibody) at dilution 1/25. (Original magnification: ×200)



Immunohistochemistry of paraffin-embedded Human brain tissue using [TA350153] (TAB3 Antibody) at dilution 1/25. (Original magnification: $\times 200$)