

## Product datasheet for **TA350151S**

### **BUB3 Rabbit Polyclonal Antibody**

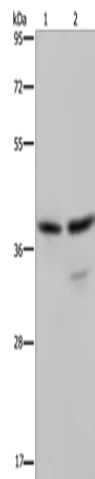
#### **Product data:**

Product Type:	Primary Antibodies
Applications:	WB
Recommended Dilution:	WB: 500-2000 WB positive control: Jurkat and Hela cells
Reactivity:	Human, Mouse
Host:	Rabbit
Isotype:	IgG
Clonality:	Polyclonal
Immunogen:	Fusion protein of human BUB3
Formulation:	pH7.4 PBS, 0.05% NaN <sub>3</sub> , 40% Glycerol
Purification:	Antigen affinity purification
Conjugation:	Unconjugated
Storage:	Store at -20°C as received.
Stability:	Stable for 12 months from date of receipt.
Predicted Protein Size:	37 kDa
Gene Name:	BUB3, mitotic checkpoint protein
Database Link:	<a href="#">NP_001007794</a> <a href="#">Entrez Gene 12237 Mouse</a> <a href="#">Entrez Gene 9184 Human</a> <a href="#">O43684</a>
Background:	This gene encodes a protein involved in spindle checkpoint function. The encoded protein contains four WD repeat domains and has sequence similarity with the yeast BUB3 protein. Alternate transcriptional splice variants, encoding different isoforms, have been characterized.
Synonyms:	BUB3L; hBUB3
Protein Families:	Druggable Genome
Protein Pathways:	Cell cycle



[View online »](#)

## Product images:



Gel: 8%SDS-PAGE

Lysate: 40 µg

Lane 1-2: Jurkat cells

Hela cells

Primary antibody: [TA350151] (BUB3 Antibody) at dilution 1/300

Secondary antibody: Goat anti rabbit IgG at 1/8000 dilution

Exposure time: 10 seconds