

## Product datasheet for **TA350150**

### **MAGEB10 Rabbit Polyclonal Antibody**

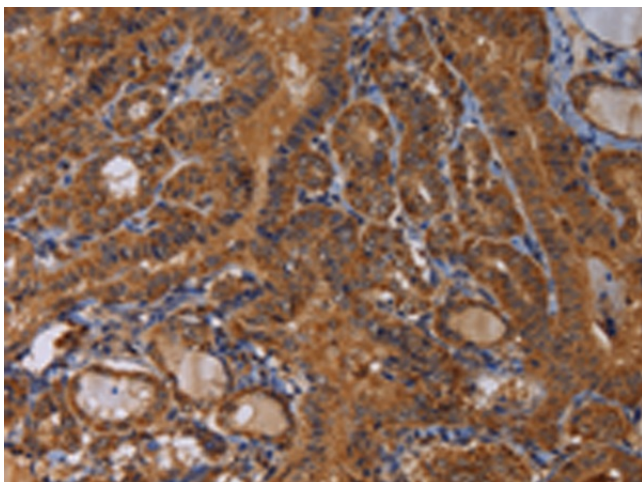
#### **Product data:**

Product Type:	Primary Antibodies
Applications:	IHC
Recommended Dilution:	IHC: 100-300 Positive control: Human thyroid cancer Predicted cell location: Cytoplasm
Reactivity:	Human
Host:	Rabbit
Isotype:	IgG
Clonality:	Polyclonal
Immunogen:	Fusion protein of human MAGEB10
Formulation:	pH7.4 PBS, 0.05% NaN <sub>3</sub> , 40% Glycerol
Concentration:	lot specific
Purification:	Antigen affinity purification
Conjugation:	Unconjugated
Storage:	Store at -20°C as received.
Stability:	Stable for 12 months from date of receipt.
Gene Name:	MAGE family member B10
Database Link:	<a href="#">NP_872312</a> <a href="#">Entrez Gene 139422 Human</a> <a href="#">Q96LZ2</a>
Background:	This gene encodes a member of the B subfamily of the melanoma associated antigen protein family. The encoded protein is specifically expressed in testis and tumor cells.
Synonyms:	FLJ32965; MGC120394

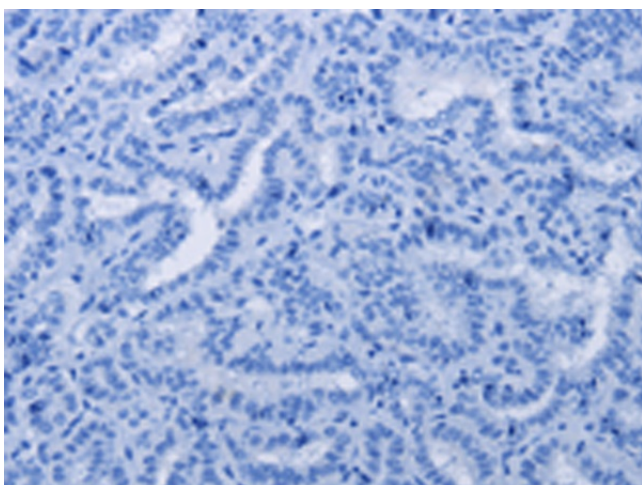


[View online »](#)

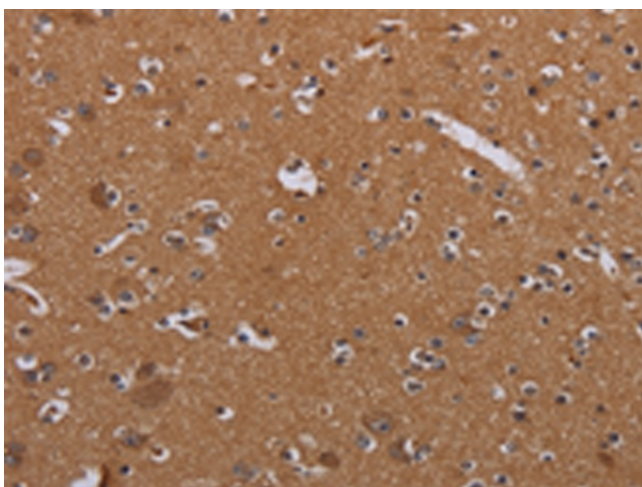
## Product images:



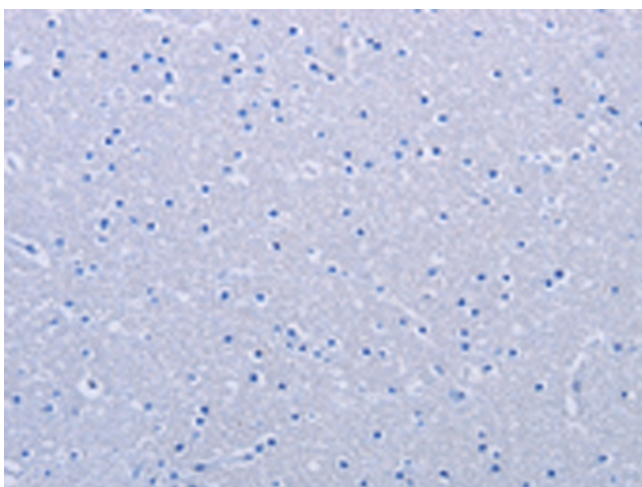
Immunohistochemistry of paraffin-embedded Human thyroid cancer tissue using TA350150 (MAGEB10 Antibody) at dilution 1/60 (Original magnification:  $\times 200$ )



Immunohistochemistry of paraffin-embedded Human thyroid cancer tissue using TA350150 (MAGEB10 Antibody) at dilution 1/60, treated with fusion protein. (Original magnification:  $\times 200$ )



Immunohistochemistry of paraffin-embedded Human brain tissue using TA350150 (MAGEB10 Antibody) at dilution 1/60 (Original magnification: ×200)



Immunohistochemistry of paraffin-embedded Human brain tissue using TA350150 (MAGEB10 Antibody) at dilution 1/60, treated with fusion protein. (Original magnification: ×200)