

## Product datasheet for **TA350148**

### **MAGEA10 Rabbit Polyclonal Antibody**

#### **Product data:**

Product Type:	Primary Antibodies
Applications:	IHC, WB
Recommended Dilution:	WB: 1000-5000 WB positive control: A375 cells IHC: 50-200 Positive control: Human esophagus cancer Predicted cell location: Nucleus
Reactivity:	Human
Host:	Rabbit
Isotype:	IgG
Clonality:	Polyclonal
Immunogen:	Fusion protein of human MAGEA10
Formulation:	pH7.4 PBS, 0.05% NaN <sub>3</sub> , 40% Glycerol
Concentration:	lot specific
Purification:	Antigen affinity purification
Conjugation:	Unconjugated
Storage:	Store at -20°C as received.
Stability:	Stable for 12 months from date of receipt.
Predicted Protein Size:	41 kDa
Gene Name:	MAGE family member A10
Database Link:	<a href="#">NP_066386</a> <a href="#">Entrez Gene 4109 Human</a> <a href="#">P43363</a>



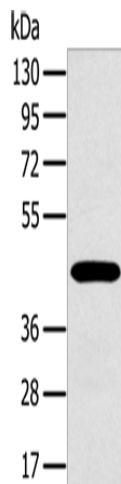
[View online »](#)

**Background:**

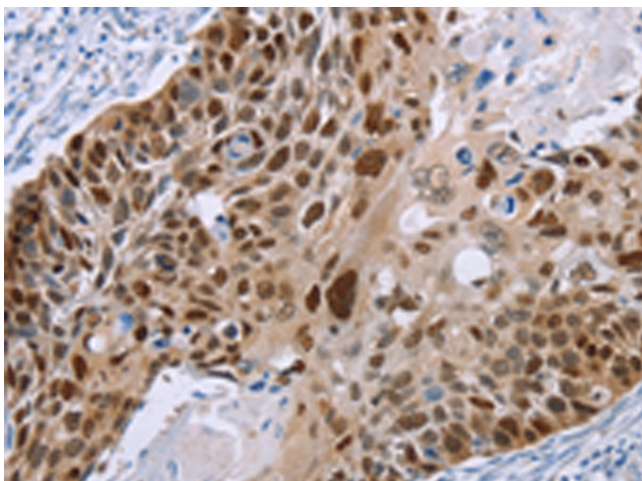
This gene is a member of the MAGEA gene family. The members of this family encode proteins with 50 to 80% sequence identity to each other. The promoters and first exons of the MAGEA genes show considerable variability, suggesting that the existence of this gene family enables the same function to be expressed under different transcriptional controls. The MAGEA genes are clustered at chromosomal location Xq28. They have been implicated in some hereditary disorders, such as dyskeratosis congenita. Alternative splicing results in multiple transcript variants.

**Synonyms:**

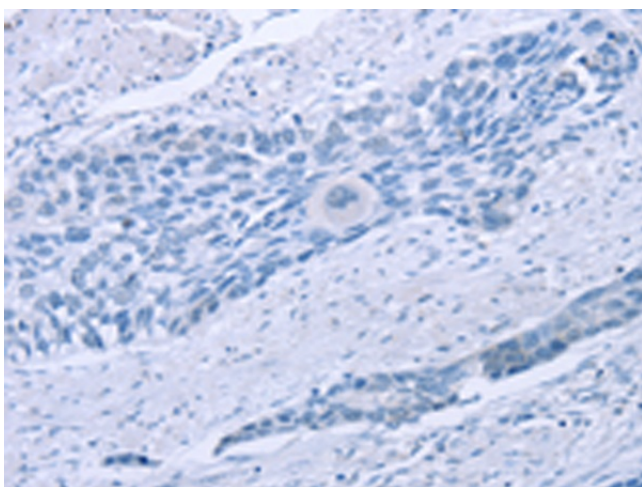
CT1.10; MAGE10

**Product images:**

Gel: 8%SDS-PAGE  
Lysate: 40 µg  
Lane: A375 cells  
Primary antibody: TA350148 (MAGEA10 Antibody) at dilution 1/400  
Secondary antibody: Goat anti rabbit IgG at 1/8000 dilution  
Exposure time: 20 seconds



Immunohistochemistry of paraffin-embedded Human esophagus cancer tissue using TA350148 (MAGEA10 Antibody) at dilution 1/50 (Original magnification: ×200)



Immunohistochemistry of paraffin-embedded Human esophagus cancer tissue using TA350148 (MAGEA10 Antibody) at dilution 1/50, treated with fusion protein. (Original magnification: ×200)