

Product datasheet for **TA350147**

LZTFL1 Rabbit Polyclonal Antibody

Product data:

Product Type:	Primary Antibodies
Applications:	IHC, WB
Recommended Dilution:	WB: 500-2000 WB positive control: Human transitional cells carcinoma tissue, 293T and A172 cells, human testis tissue and Hela cells IHC: 50-200 Positive control: Human gastric cancer Predicted cell location: Cytoplasm
Reactivity:	Human, Mouse, Rat
Host:	Rabbit
Isotype:	IgG
Clonality:	Polyclonal
Immunogen:	Fusion protein of human LZTFL1
Formulation:	pH7.4 PBS, 0.05% NaN ₃ , 40% Glycerol
Concentration:	lot specific
Purification:	Antigen affinity purification
Conjugation:	Unconjugated
Storage:	Store at -20°C as received.
Stability:	Stable for 12 months from date of receipt.
Predicted Protein Size:	35 kDa
Gene Name:	leucine zipper transcription factor like 1
Database Link:	NP_065080 Entrez Gene 93730 Mouse Entrez Gene 316102 Rat Entrez Gene 54585 Human Q9NQ48



[View online »](#)

Background:

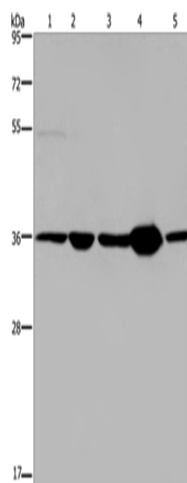
This gene encodes a ubiquitously expressed protein that localizes to the cytoplasm. This protein interacts with Bardet-Biedl Syndrome (BBS) proteins and, through its interaction with BBS protein complexes, regulates protein trafficking to the ciliary membrane. Nonsense mutations in this gene cause a form of Bardet-Biedl Syndrome; a ciliopathy characterized in part by polydactyly, obesity, cognitive impairment, hypogonadism, and kidney failure. This gene may also function as a tumor suppressor; possibly by interacting with E-cadherin and the actin cytoskeleton and thereby regulating the transition of epithelial cells to mesenchymal cells. Alternative splicing of this gene results in multiple transcript variants.

Synonyms:

BBS17

Protein Families:

Transcription Factors

Product images:

Gel: 8%SDS-PAGE

Lysate: 40 µg

Lane 1-5: Human transitional cell carcinoma tissue

293T cells

A172 cells

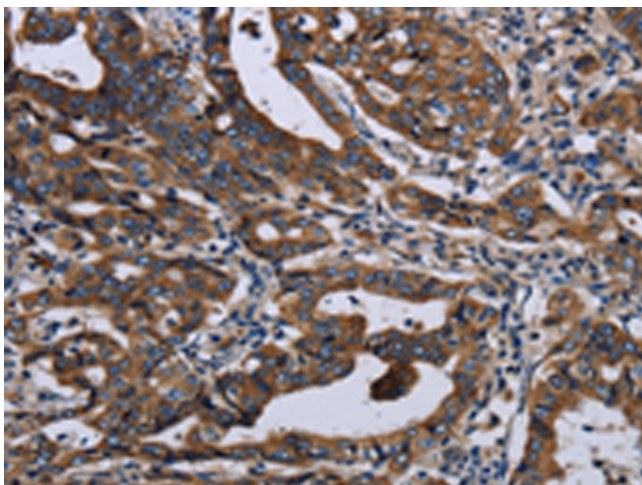
human testis tissue

Hela cells

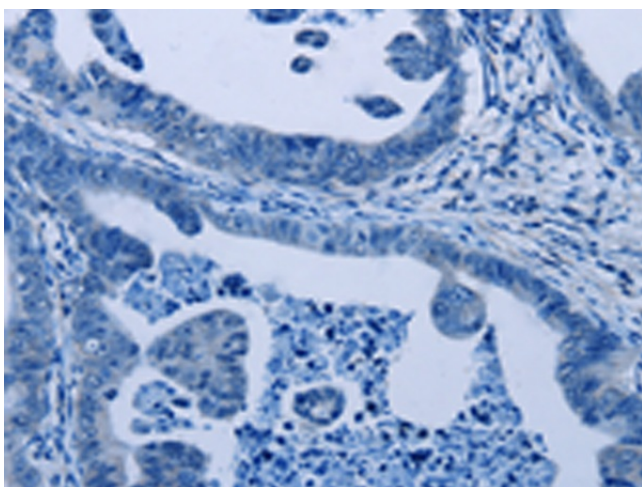
Primary antibody: TA350147 (LZTFL1 Antibody) at dilution 1/550

Secondary antibody: Goat anti rabbit IgG at 1/8000 dilution

Exposure time: 20 seconds



Immunohistochemistry of paraffin-embedded Human gastric cancer tissue using TA350147 (LZTFL1 Antibody) at dilution 1/50 (Original magnification: ×200)



Immunohistochemistry of paraffin-embedded Human gastric cancer tissue using TA350147 (LZTFL1 Antibody) at dilution 1/50, treated with fusion protein. (Original magnification: $\times 200$)