

## Product datasheet for **TA350146**

### LYN Rabbit Polyclonal Antibody

#### Product data:

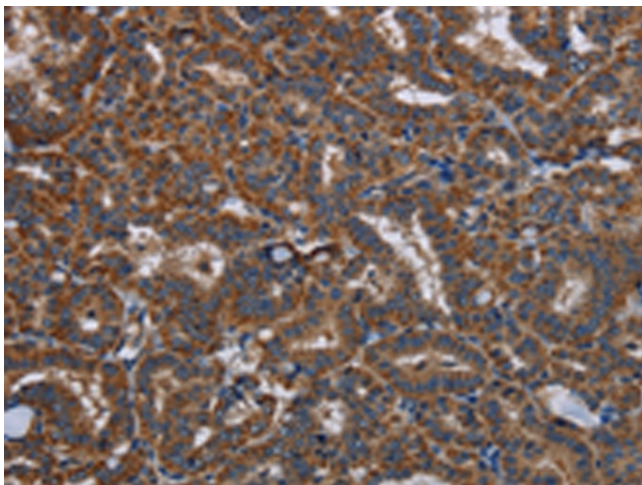
Product Type:	Primary Antibodies
Applications:	IHC
Recommended Dilution:	IHC: 25-100 Positive control: Human thyroid cancer Predicted cell location: Cytoplasm
Reactivity:	Human, Mouse, Rat
Host:	Rabbit
Isotype:	IgG
Clonality:	Polyclonal
Immunogen:	Fusion protein of human LYN
Formulation:	pH7.4 PBS, 0.05% NaN <sub>3</sub> , 40% Glycerol
Concentration:	lot specific
Purification:	Antigen affinity purification
Conjugation:	Unconjugated
Storage:	Store at -20°C as received.
Stability:	Stable for 12 months from date of receipt.
Gene Name:	LYN proto-oncogene, Src family tyrosine kinase
Database Link:	<a href="#">NP_002341</a> <a href="#">Entrez Gene 17096 Mouse</a> <a href="#">Entrez Gene 81515 Rat</a> <a href="#">Entrez Gene 4067 Human</a> <a href="#">P07948</a>
Background:	This gene encodes a tyrosine protein kinase, which maybe involved in the regulation of mast cell degranulation, and erythroid differentiation. Alternatively spliced transcript variants encoding different isoforms have been found for this gene.
Synonyms:	JTK8; p53Lyn; p56Lyn
Protein Families:	Druggable Genome, Protein Kinase



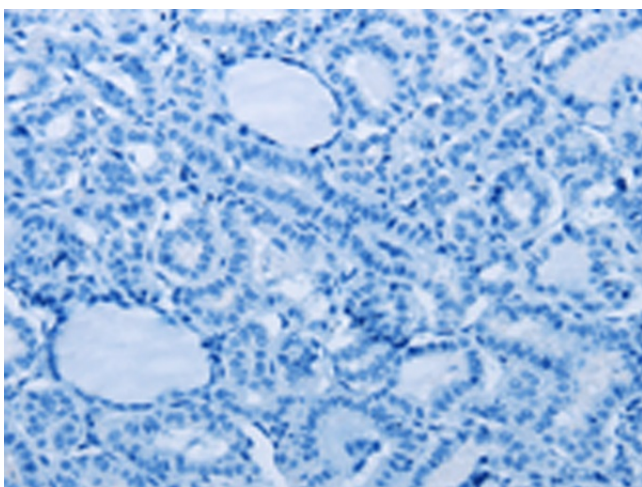
[View online »](#)

**Protein Pathways:** B cell receptor signaling pathway, Chemokine signaling pathway, Epithelial cell signaling in Helicobacter pylori infection, Fc epsilon RI signaling pathway, Fc gamma R-mediated phagocytosis, Long-term depression

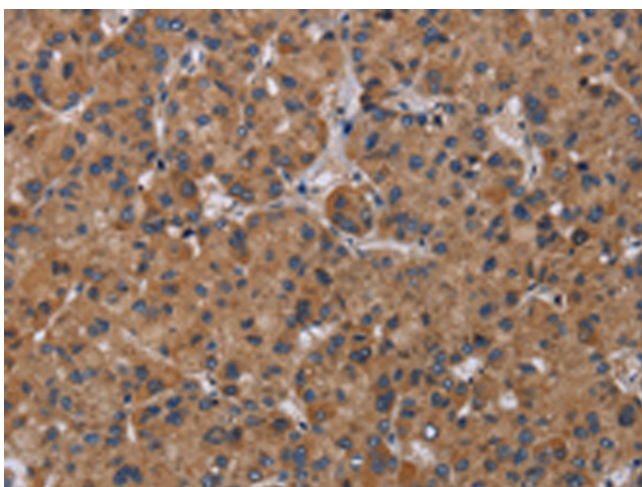
**Product images:**



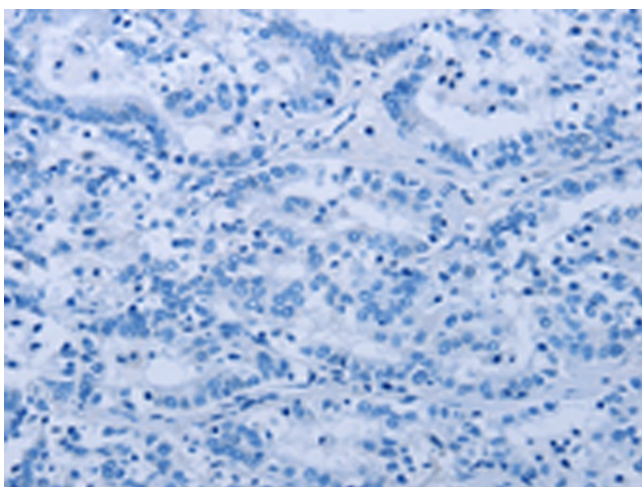
Immunohistochemistry of paraffin-embedded Human thyroid cancer tissue using TA350146 (LYN Antibody) at dilution 1/20 (Original magnification:  $\times 200$ )



Immunohistochemistry of paraffin-embedded Human thyroid cancer tissue using TA350146 (LYN Antibody) at dilution 1/20, treated with fusion protein. (Original magnification:  $\times 200$ )



Immunohistochemistry of paraffin-embedded Human liver cancer tissue using TA350146 (LYN Antibody) at dilution 1/20 (Original magnification: ×200)



Immunohistochemistry of paraffin-embedded Human liver cancer tissue using TA350146 (LYN Antibody) at dilution 1/20, treated with fusion protein. (Original magnification: ×200)