

Product datasheet for **TA350144S**

Leukotriene A4 hydrolase (LTA4H) Rabbit Polyclonal Antibody

Product data:

Product Type:	Primary Antibodies
Applications:	IHC, WB
Recommended Dilution:	WB: 200-1000 WB positive control: Human fetal brain tissue IHC: 25-100 Positive control: Human esophagus cancer Predicted cell location: Cytoplasm and Nucleus
Reactivity:	Human, Mouse, Rat
Host:	Rabbit
Isotype:	IgG
Clonality:	Polyclonal
Immunogen:	Fusion protein of human LTA4H
Formulation:	pH7.4 PBS, 0.05% NaN ₃ , 40% Glycerol
Purification:	Antigen affinity purification
Conjugation:	Unconjugated
Storage:	Store at -20°C as received.
Stability:	Stable for 12 months from date of receipt.
Predicted Protein Size:	69 kDa
Gene Name:	leukotriene A4 hydrolase
Database Link:	NP_000886 Entrez Gene 16993 Mouse Entrez Gene 299732 Rat Entrez Gene 4048 Human P09960

Background: LTA4H (Leukotriene A4-hydrolase) is a Zn²⁺-containing enzyme with both epoxide hydrolase and aminopeptidase activity. As an epoxide hydrolase, LTA4H catalyzes the hydration of LTA4 to leukotriene B4 (LTB4, 5S,12R-dihydroxy-6,14-cis-8,10-trans-eicosatetraenoic acid), a potent lipid chemoattractant that influences inflammation, immune responses, and host defense against infection. As an aminopeptidase, LTA4H catalyzes the cleavage of amides of para-nitroaniline. The human LTA4H gene encodes a 610 amino acid protein.



[View online »](#)

Synonyms: leukotriene A4 hydrolase

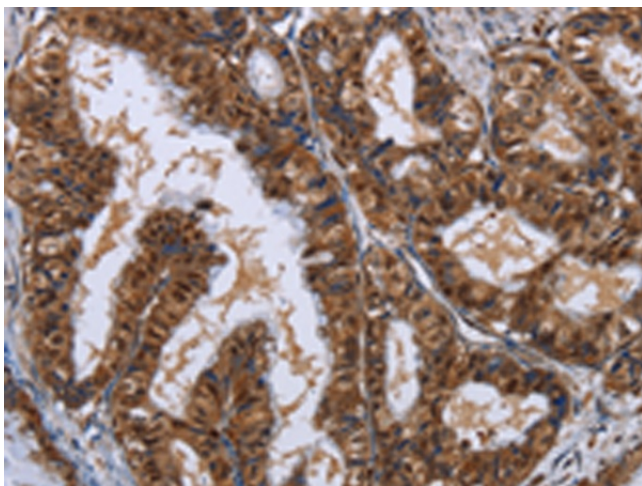
Protein Families: Druggable Genome, Protease

Protein Pathways: Arachidonic acid metabolism, Metabolic pathways

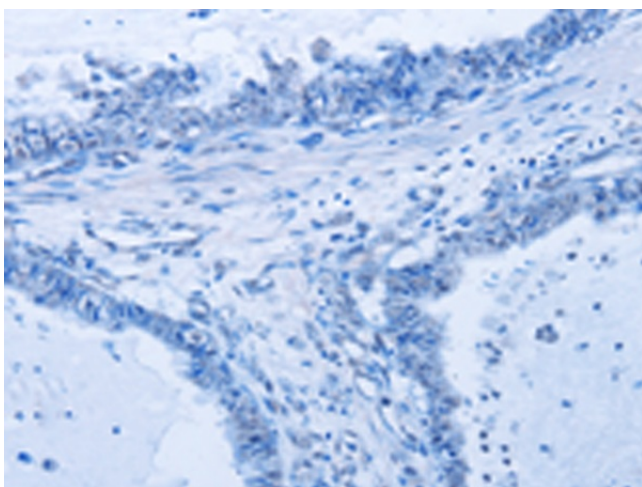
Product images:



Gel: 8%SDS-PAGE
Lysate: 40 µg
Lane: Human fetal brain tissue
Primary antibody: [TA350144] (LTA4H Antibody) at dilution 1/500
Secondary antibody: Goat anti rabbit IgG at 1/8000 dilution
Exposure time: 2 minutes



Immunohistochemistry of paraffin-embedded Human esophagus cancer tissue using [TA350144] (LTA4H Antibody) at dilution 1/30 (Original magnification: ×200)



Immunohistochemistry of paraffin-embedded Human esophagus cancer tissue using [TA350144] (LTA4H Antibody) at dilution 1/30, treated with fusion protein. (Original magnification: $\times 200$)