

## Product datasheet for **TA350144**

### Leukotriene A4 hydrolase (LTA4H) Rabbit Polyclonal Antibody

#### Product data:

|                         |  |
|-------------------------|--|
| Product Type:           | Primary Antibodies   |
| Applications:           | IHC, WB  |
| Recommended Dilution:   | WB: 200-1000<br>WB positive control: Human fetal brain tissue<br>IHC: 25-100<br>Positive control: Human esophagus cancer<br>Predicted cell location: Cytoplasm and Nucleus   |
| Reactivity:             | Human, Mouse, Rat  |
| Host:                   | Rabbit   |
| Isotype:                | IgG  |
| Clonality:              | Polyclonal   |
| Immunogen:              | Fusion protein of human LTA4H  |
| Formulation:            | pH7.4 PBS, 0.05% NaN <sub>3</sub> , 40% Glycerol   |
| Concentration:          | lot specific   |
| Purification:           | Antigen affinity purification  |
| Conjugation:            | Unconjugated   |
| Storage:                | Store at -20°C as received.  |
| Stability:              | Stable for 12 months from date of receipt.   |
| Predicted Protein Size: | 69 kDa   |
| Gene Name:              | leukotriene A4 hydrolase   |
| Database Link:          | <a href="#">NP_000886</a><br><a href="#">Entrez Gene 16993 Mouse</a> <a href="#">Entrez Gene 299732 Rat</a> <a href="#">Entrez Gene 4048 Human</a><br><a href="#">P09960</a> |



[View online »](#)

**Background:** LTA4H (Leukotriene A4-hydrolase ) is a Zn<sup>2+</sup>-containing enzyme with both epoxide hydrolase and aminopeptidase activity. As an epoxide hydrolase, LTA4H catalyzes the hydration of LTA4 to leukotriene B4 (LTB4, 5S,12R-dihydroxy-6,14-cis-8,10-trans-eicosatetraenoic acid), a potent lipid chemoattractant that influences inflammation, immune responses, and host defense against infection. As an aminopeptidase, LTA4H catalyzes the cleavage of amides of para-nitroaniline. The human LTA4H gene encodes a 610 amino acid protein.

**Synonyms:** leukotriene A4 hydrolase

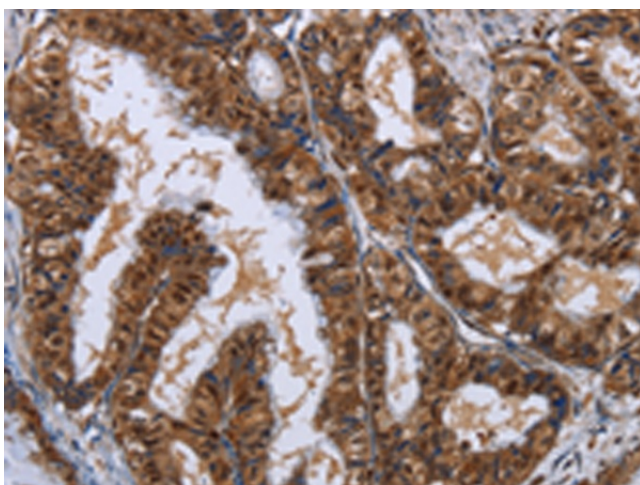
**Protein Families:** Druggable Genome, Protease

**Protein Pathways:** Arachidonic acid metabolism, Metabolic pathways

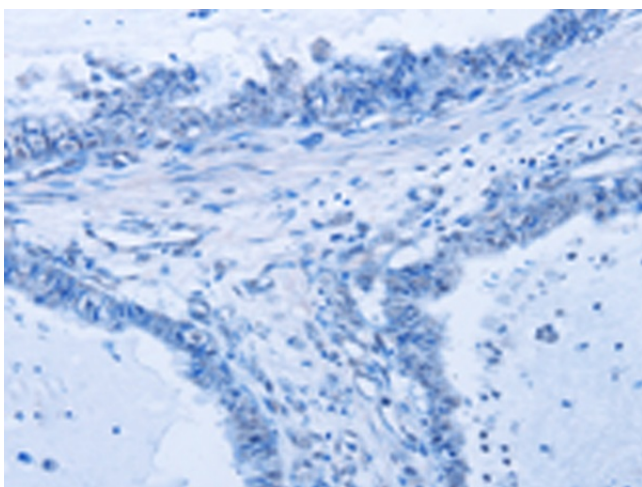
### Product images:



Gel: 8%SDS-PAGE  
Lysate: 40 µg  
Lane: Human fetal brain tissue  
Primary antibody: TA350144 (LTA4H Antibody) at dilution 1/500  
Secondary antibody: Goat anti rabbit IgG at 1/8000 dilution  
Exposure time: 2 minutes



Immunohistochemistry of paraffin-embedded Human esophagus cancer tissue using TA350144 (LTA4H Antibody) at dilution 1/30 (Original magnification: ×200)



Immunohistochemistry of paraffin-embedded Human esophagus cancer tissue using TA350144 (LTA4H Antibody) at dilution 1/30, treated with fusion protein. (Original magnification: ×200)