

Product datasheet for TA350143S

LRRC57 Rabbit Polyclonal Antibody

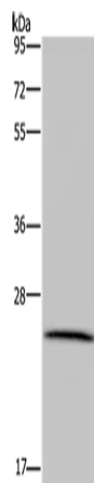
Product data:

Product Type:	Primary Antibodies
Applications:	IHC, WB
Recommended Dilution:	WB: 200-1000 WB positive control: HT-29 cells IHC: 50-200 Positive control: Human thyroid cancer Predicted cell location: Cytoplasm
Reactivity:	Human, Mouse, Rat
Host:	Rabbit
Isotype:	IgG
Clonality:	Polyclonal
Immunogen:	Fusion protein of human LRRC57
Formulation:	pH7.4 PBS, 0.05% NaN ₃ , 40% Glycerol
Purification:	Antigen affinity purification
Conjugation:	Unconjugated
Storage:	Store at -20°C as received.
Stability:	Stable for 12 months from date of receipt.
Predicted Protein Size:	27 kDa
Gene Name:	leucine rich repeat containing 57
Database Link:	NP_694992 Entrez Gene 66606 Mouse Entrez Gene 311346 Rat Entrez Gene 255252 Human Q8N9N7
Background:	LRRC57 (leucine rich repeat containing 57) is a 239 amino acid protein that contains eight LRR repeats and is encoded by a gene that maps to human chromosome 15q15.2. Chromosome 15 houses over 700 genes and comprises nearly 3% of the human genome. Angelman syndrome, Prader-Willi syndrome, Tay-Sachs disease and Marfan syndrome are all associated with defects in chromosome 15-localized genes.
Synonyms:	DKFZp686H1865; FLJ36812

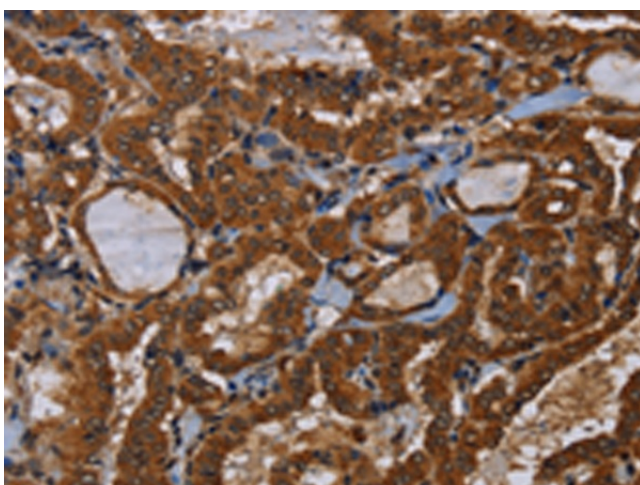

[View online »](#)

Protein Families: Druggable Genome

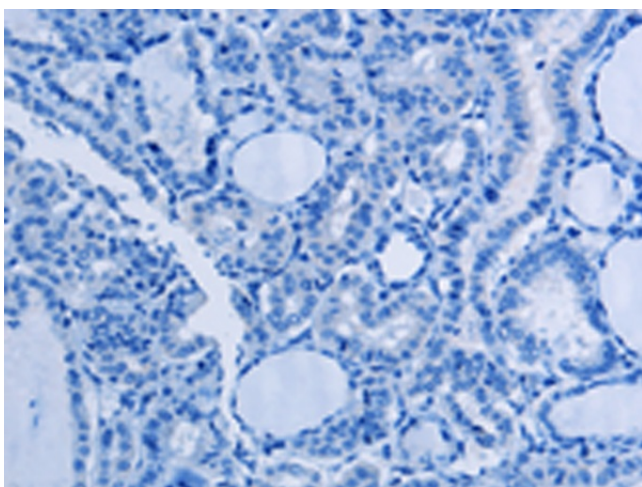
Product images:



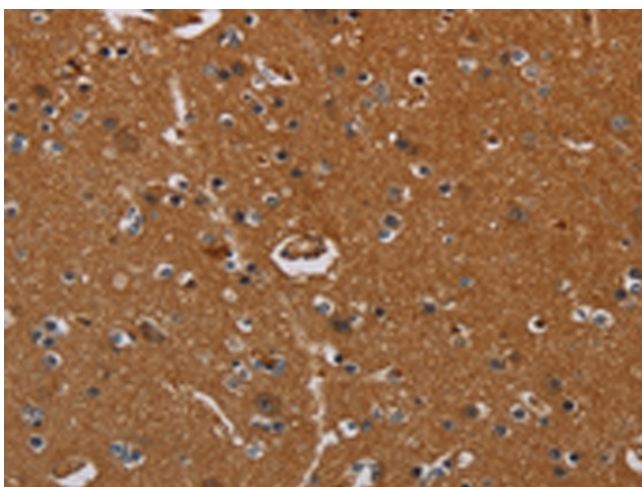
Gel: 10%SDS-PAGE
Lysate: 40 µg
Lane: HT29 cells
Primary antibody: [TA350143] (LRRC57 Antibody)
at dilution 1/200
Secondary antibody: Goat anti rabbit IgG at
1/8000 dilution
Exposure time: 5 minutes



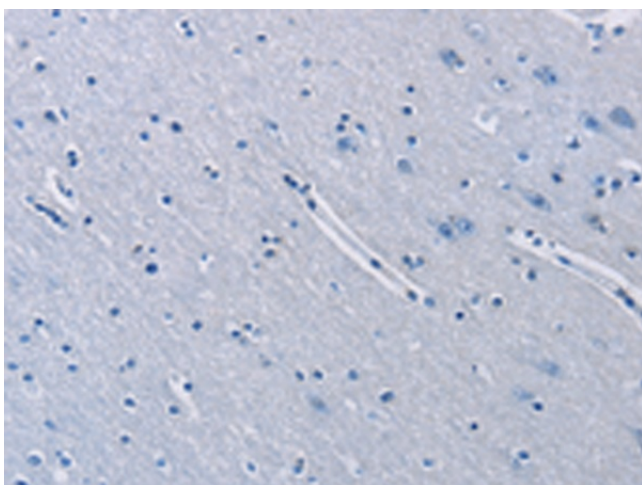
Immunohistochemistry of paraffin-embedded
Human thyroid cancer tissue using [TA350143]
(LRRC57 Antibody) at dilution 1/40 (Original
magnification: ×200)



Immunohistochemistry of paraffin-embedded Human thyroid cancer tissue using [TA350143] (LRR57 Antibody) at dilution 1/40, treated with fusion protein. (Original magnification: ×200)



Immunohistochemistry of paraffin-embedded Human brain tissue using [TA350143] (LRR57 Antibody) at dilution 1/40 (Original magnification: ×200)



Immunohistochemistry of paraffin-embedded Human brain tissue using [TA350143] (LRR57 Antibody) at dilution 1/40, treated with fusion protein. (Original magnification: ×200)