

## Product datasheet for **TA350143**

### LRR57 Rabbit Polyclonal Antibody

#### Product data:

|                         |  |
|-------------------------|--|
| Product Type:           | Primary Antibodies   |
| Applications:           | IHC, WB  |
| Recommended Dilution:   | WB: 200-1000<br>WB positive control: HT-29 cells<br>IHC: 50-200<br>Positive control: Human thyroid cancer<br>Predicted cell location: Cytoplasm  |
| Reactivity:             | Human, Mouse, Rat  |
| Host:                   | Rabbit   |
| Isotype:                | IgG  |
| Clonality:              | Polyclonal   |
| Immunogen:              | Fusion protein of human LRR57  |
| Formulation:            | pH7.4 PBS, 0.05% NaN <sub>3</sub> , 40% Glycerol   |
| Concentration:          | lot specific   |
| Purification:           | Antigen affinity purification  |
| Conjugation:            | Unconjugated   |
| Storage:                | Store at -20°C as received.  |
| Stability:              | Stable for 12 months from date of receipt.   |
| Predicted Protein Size: | 27 kDa   |
| Gene Name:              | leucine rich repeat containing 57  |
| Database Link:          | <a href="#">NP_694992</a><br><a href="#">Entrez Gene 66606 Mouse</a> <a href="#">Entrez Gene 311346 Rat</a> <a href="#">Entrez Gene 255252 Human</a><br><a href="#">Q8N9N7</a>   |
| Background:             | LRR57 (leucine rich repeat containing 57) is a 239 amino acid protein that contains eight LRR repeats and is encoded by a gene that maps to human chromosome 15q15.2. Chromosome 15 houses over 700 genes and comprises nearly 3% of the human genome. Angelman syndrome, Prader-Willi syndrome, Tay-Sachs disease and Marfan syndrome are all associated with defects in chromosome 15-localized genes. |

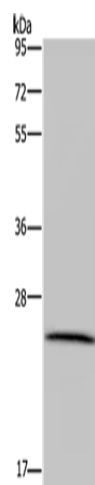


[View online »](#)

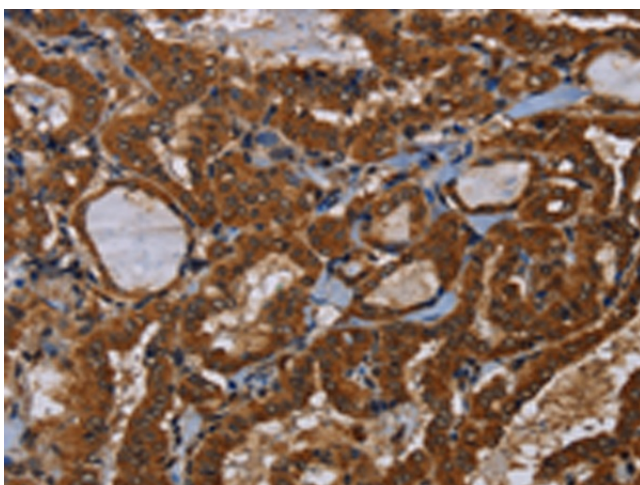
Synonyms: DKFZp686H1865; FLJ36812

Protein Families: Druggable Genome

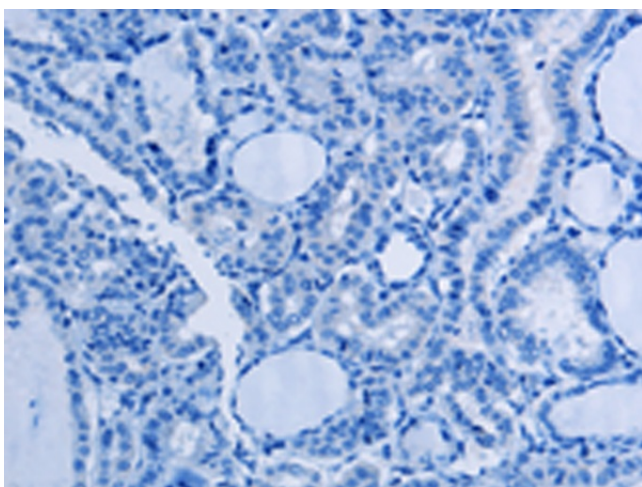
### Product images:



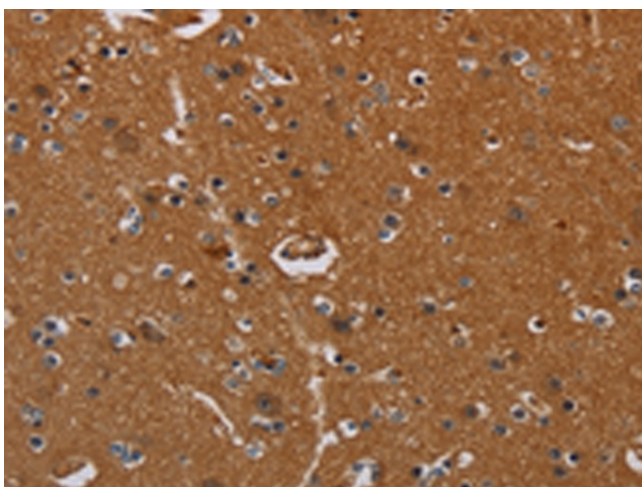
Gel: 10%SDS-PAGE  
Lysate: 40  $\mu$ g  
Lane: HT29 cells  
Primary antibody: TA350143 (LRRC57 Antibody)  
at dilution 1/200  
Secondary antibody: Goat anti rabbit IgG at  
1/8000 dilution  
Exposure time: 5 minutes



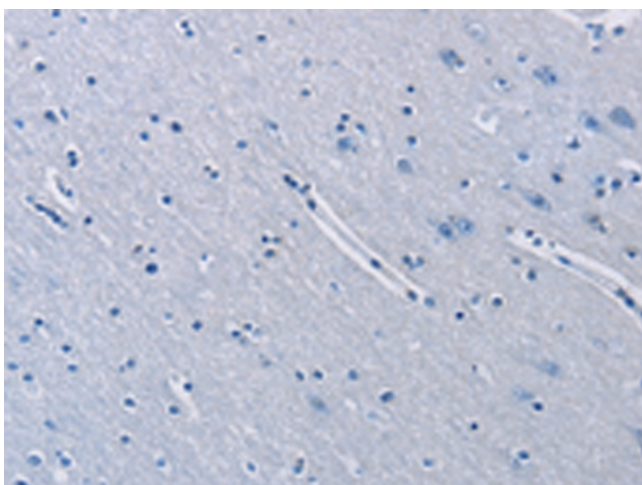
Immunohistochemistry of paraffin-embedded  
Human thyroid cancer tissue using TA350143  
(LRRC57 Antibody) at dilution 1/40 (Original  
magnification:  $\times$ 200)



Immunohistochemistry of paraffin-embedded Human thyroid cancer tissue using TA350143 (LRRC57 Antibody) at dilution 1/40, treated with fusion protein. (Original magnification: ×200)



Immunohistochemistry of paraffin-embedded Human brain tissue using TA350143 (LRRC57 Antibody) at dilution 1/40 (Original magnification: ×200)



Immunohistochemistry of paraffin-embedded Human brain tissue using TA350143 (LRRC57 Antibody) at dilution 1/40, treated with fusion protein. (Original magnification: ×200)