

## Product datasheet for **TA350137**

### LIMS1 Rabbit Polyclonal Antibody

#### Product data:

Product Type:	Primary Antibodies
Applications:	IHC, WB
Recommended Dilution:	WB: 500-2000 WB positive control: Human kidney and mouse lung tissue IHC: 50-200 Positive control: Human colon cancer Predicted cell location: Cytoplasm
Reactivity:	Human, Mouse
Host:	Rabbit
Isotype:	IgG
Clonality:	Polyclonal
Immunogen:	Fusion protein of human LIMS1
Formulation:	pH7.4 PBS, 0.05% NaN <sub>3</sub> , 40% Glycerol
Concentration:	lot specific
Purification:	Antigen affinity purification
Conjugation:	Unconjugated
Storage:	Store at -20°C as received.
Stability:	Stable for 12 months from date of receipt.
Predicted Protein Size:	37 kDa
Gene Name:	LIM zinc finger domain containing 1
Database Link:	<a href="#">NP_004978</a> <a href="#">Entrez Gene 110829 Mouse</a> <a href="#">Entrez Gene 3987 Human</a> <a href="#">P48059</a>



[View online »](#)

**Background:**

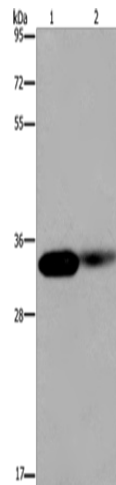
The protein encoded by this gene is an adaptor protein which contains five LIM domains, or double zinc fingers. The protein is likely involved in integrin signaling through its LIM domain-mediated interaction with integrin-linked kinase, found in focal adhesion plaques. It is also thought to act as a bridge linking integrin-linked kinase to NCK adaptor protein 2, which is involved in growth factor receptor kinase signaling pathways. Its localization to the periphery of spreading cells also suggests that this protein may play a role in integrin-mediated cell adhesion or spreading. Several transcript variants encoding different isoforms have been found for this gene.

**Synonyms:**

PINCH; PINCH-1; PINCH1

**Protein Families:**

Druggable Genome

**Product images:**

Gel: 8%SDS-PAGE

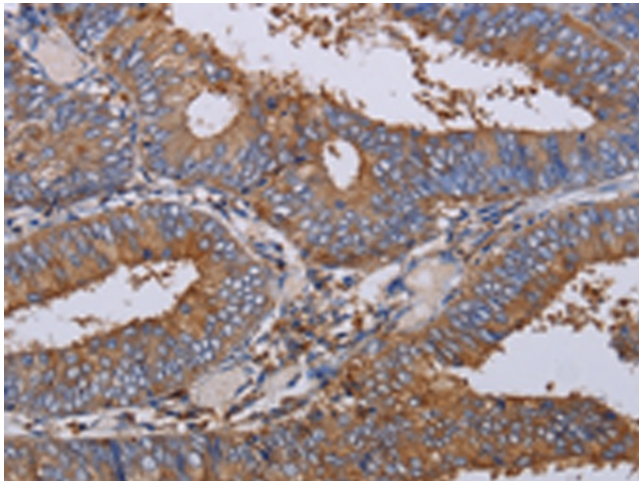
Lysate: 40 µg

Lane 1-2: Human kidney tissue  
mouse lung tissue

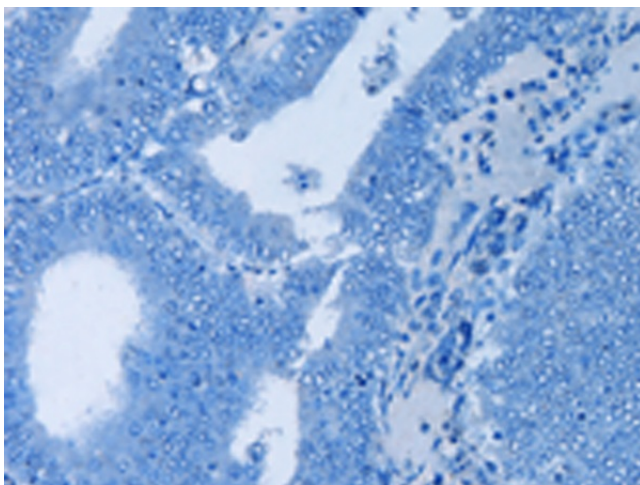
Primary antibody: TA350137 (LIMS1 Antibody) at  
dilution 1/200

Secondary antibody: Goat anti rabbit IgG at  
1/8000 dilution

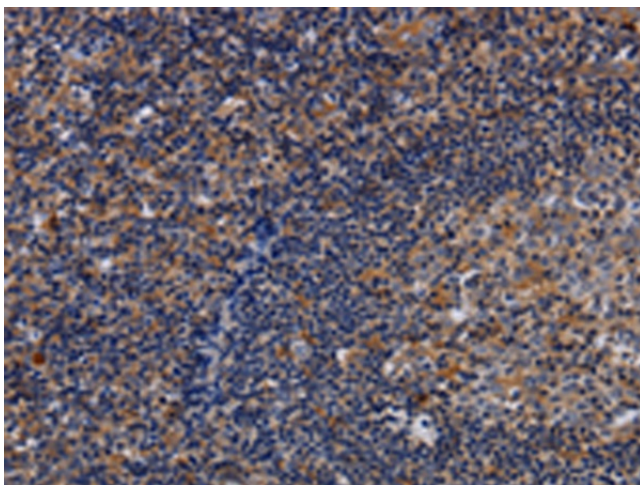
Exposure time: 20 seconds



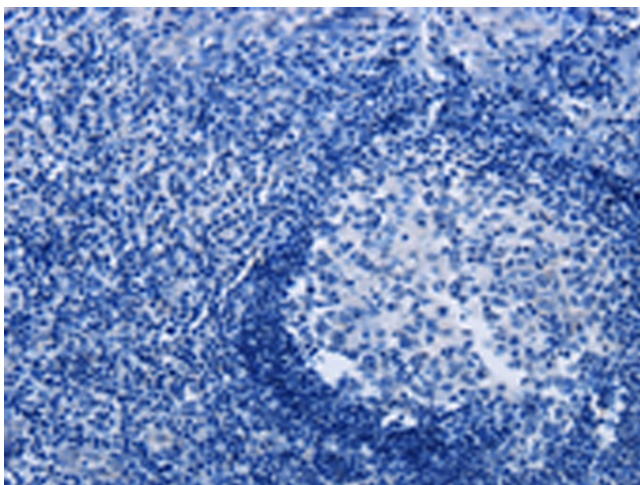
Immunohistochemistry of paraffin-embedded  
Human colon cancer tissue using TA350137  
(LIMS1 Antibody) at dilution 1/40 (Original  
magnification: ×200)



Immunohistochemistry of paraffin-embedded Human colon cancer tissue using TA350137 (LIMS1 Antibody) at dilution 1/40, treated with fusion protein. (Original magnification:  $\times 200$ )



Immunohistochemistry of paraffin-embedded Human tonsil tissue using TA350137 (LIMS1 Antibody) at dilution 1/40 (Original magnification:  $\times 200$ )



Immunohistochemistry of paraffin-embedded Human tonsil tissue using TA350137 (LIMS1 Antibody) at dilution 1/40, treated with fusion protein. (Original magnification:  $\times 200$ )