

## Product datasheet for **TA350132S**

### P3H3 Rabbit Polyclonal Antibody

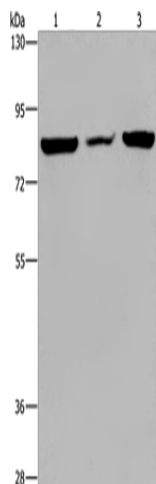
#### Product data:

Product Type:	Primary Antibodies
Applications:	IHC, WB
Recommended Dilution:	WB: 500-2000 WB positive control: A549 cells, mouse heart tissue and Hela cells IHC: 50-200 Positive control: Human rectal cancer Predicted cell location: Cytoplasm
Reactivity:	Human, Mouse
Host:	Rabbit
Isotype:	IgG
Clonality:	Polyclonal
Immunogen:	Fusion protein of human LEPREL2
Formulation:	pH7.4 PBS, 0.05% NaN <sub>3</sub> , 40% Glycerol
Purification:	Antigen affinity purification
Conjugation:	Unconjugated
Storage:	Store at -20°C as received.
Stability:	Stable for 12 months from date of receipt.
Predicted Protein Size:	82 kDa
Gene Name:	prolyl 3-hydroxylase 3
Database Link:	<a href="#">NP_055077</a> <a href="#">Entrez Gene 10536 Human</a> <a href="#">Q8IVL6</a>
Background:	The protein encoded by this gene belongs to the leprecan family of proteoglycans, which function as collagen prolyl hydroxylases that are required for proper collagen biosynthesis, folding and assembly. This protein, like other family members, is thought to reside in the endoplasmic reticulum. Epigenetic inactivation of this gene is associated with breast and other cancers, suggesting that it may function as a tumor suppressor.
Synonyms:	GRCB; HSU47926; LEPREL2

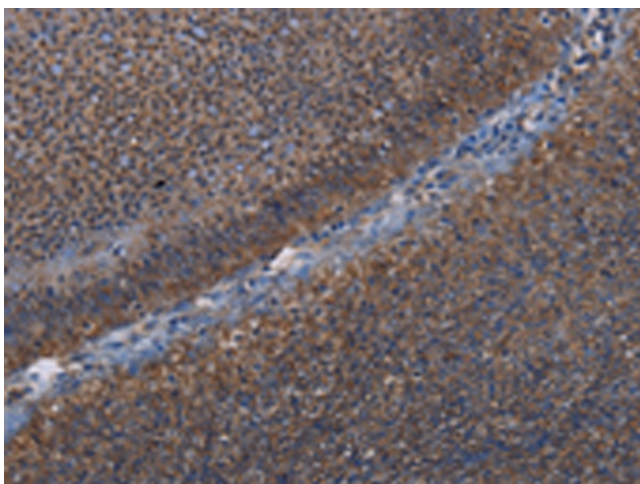


[View online »](#)

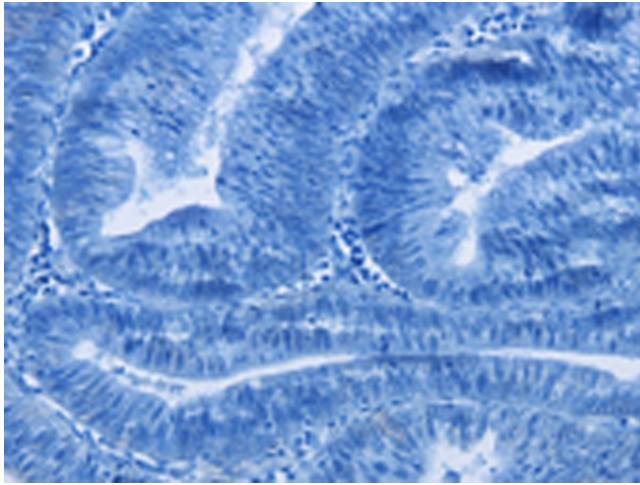
## Product images:



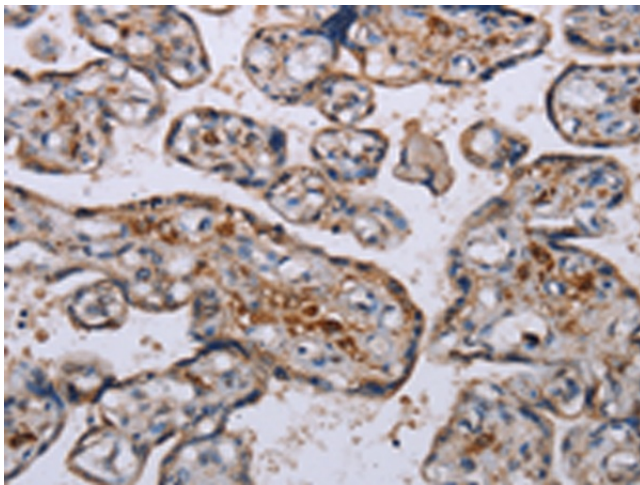
Gel: 6%SDS-PAGE  
Lysate: 40  $\mu$ g  
Lane 1-3: A549 cells  
mouse heart tissue  
HeLa cells  
Primary antibody: [TA350132] (P3H3 Antibody) at dilution 1/300  
Secondary antibody: Goat anti rabbit IgG at 1/8000 dilution  
Exposure time: 20 seconds



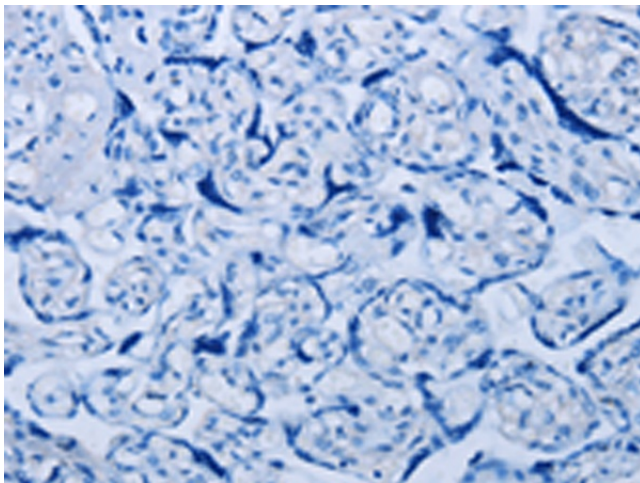
Immunohistochemistry of paraffin-embedded Human rectal cancer tissue using [TA350132] (P3H3 Antibody) at dilution 1/50 (Original magnification:  $\times$ 200)



Immunohistochemistry of paraffin-embedded Human rectal cancer tissue using [TA350132] (P3H3 Antibody) at dilution 1/50, treated with fusion protein. (Original magnification: ×200)



Immunohistochemistry of paraffin-embedded Human placenta tissue using [TA350132] (P3H3 Antibody) at dilution 1/50 (Original magnification: ×200)



Immunohistochemistry of paraffin-embedded Human placenta tissue using [TA350132] (P3H3 Antibody) at dilution 1/50, treated with fusion protein. (Original magnification: ×200)