

Product datasheet for **TA350130**

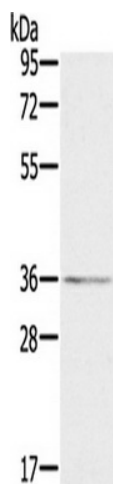
LCMT1 Rabbit Polyclonal Antibody

Product data:

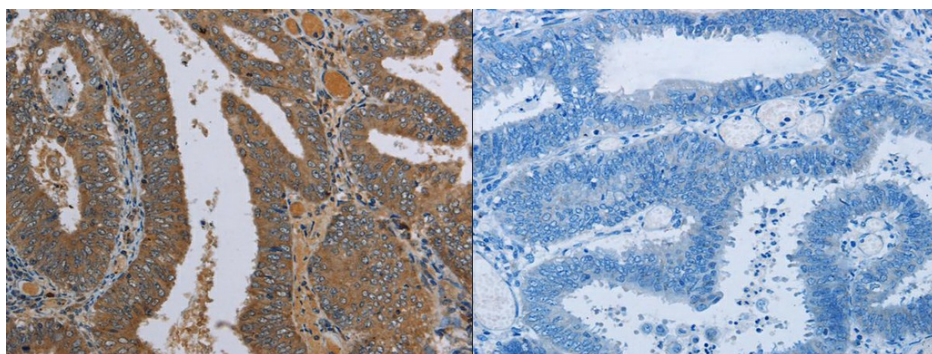
Product Type:	Primary Antibodies
Applications:	IHC, WB
Recommended Dilution:	ELISA: 1000-2000, WB: 200-1000, IHC: 25-100
Reactivity:	Human, Rat
Host:	Rabbit
Isotype:	IgG
Clonality:	Polyclonal
Immunogen:	Fusion protein of human LCMT1
Formulation:	pH7.4 PBS, 0.05% NaN ₃ , 40% Glycerol
Concentration:	lot specific
Purification:	Antigen affinity purification
Conjugation:	Unconjugated
Storage:	Store at -20°C as received.
Stability:	Stable for 12 months from date of receipt.
Predicted Protein Size:	38 kDa
Gene Name:	leucine carboxyl methyltransferase 1
Database Link:	NP_057393 Entrez Gene 361643 Rat Entrez Gene 51451 Human Q9UIC8
Background:	LCMT1 catalyzes the methylation of the carboxyl group of the C-terminal leucine residue (leu309) of the catalytic subunit of protein phosphatase-2A.
Synonyms:	CGI-68; LCMT; PPMT1
Protein Pathways:	Androgen and estrogen metabolism, Histidine metabolism, Selenoamino acid metabolism, Tyrosine metabolism



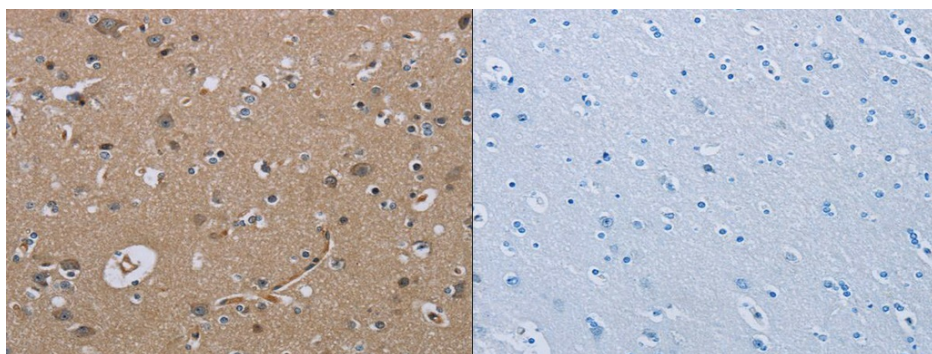
[View online »](#)

Product images:

Gel: 8%SDS-PAGE, Lysate: 40 ug, Lane: 231 cells, Primary antibody: (LCMT1 Antibody) at dilution 1/400, Secondary antibody: Goat anti rabbit IgG at 1/8000 dilution, Exposure time: 1 minute



The image on the left is immunohistochemistry of paraffin-embedded Human colon cancer tissue using (LCMT1 Antibody) at dilution 1/20, on the right is treated with fusion protein. (Original magnification: $\times 200$)



The image on the left is immunohistochemistry of paraffin-embedded Human brain tissue using (LCMT1 Antibody) at dilution 1/20, on the right is treated with fusion protein. (Original magnification: $\times 200$)