

Product datasheet for **TA350129S**

Laminin 5 (LAMB3) Rabbit Polyclonal Antibody

Product data:

Product Type:	Primary Antibodies
Applications:	IHC, WB
Recommended Dilution:	WB: 200-1000 WB positive control: PC3 cells IHC: 50-200 Positive control: Human sarcoma Predicted cell location: Cytoplasm
Reactivity:	Human, Mouse
Host:	Rabbit
Isotype:	IgG
Clonality:	Polyclonal
Immunogen:	Fusion protein of human LAMB3
Formulation:	pH7.4 PBS, 0.05% NaN ₃ , 40% Glycerol
Purification:	Antigen affinity purification
Conjugation:	Unconjugated
Storage:	Store at -20°C as received.
Stability:	Stable for 12 months from date of receipt.
Predicted Protein Size:	130 kDa
Gene Name:	laminin subunit beta 3
Database Link:	NP_001017402 Entrez Gene 16780 Mouse Entrez Gene 3914 Human Q13751

Background: The product encoded by this gene is a laminin that belongs to a family of basement membrane proteins. This protein is a beta subunit laminin, which together with an alpha and a gamma subunit, forms laminin-5. Mutations in this gene cause epidermolysis bullosa junctional Herlitz type, and generalized atrophic benign epidermolysis bullosa, diseases that are characterized by blistering of the skin. Multiple alternatively spliced transcript variants that encode the same protein have been found for this gene.



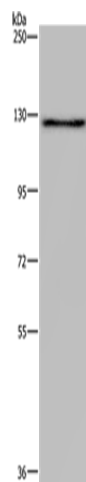
[View online »](#)

Synonyms: AI1A; BM600-125KDA; LAM5; LAMNB1

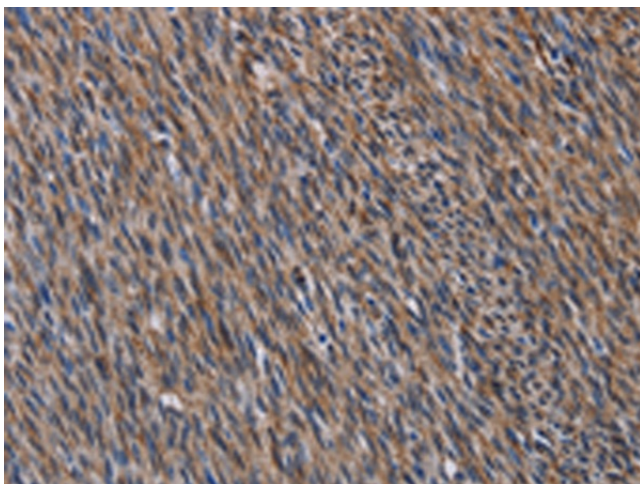
Protein Families: Druggable Genome, Secreted Protein

Protein Pathways: ECM-receptor interaction, Focal adhesion, Pathways in cancer, Small cell lung cancer

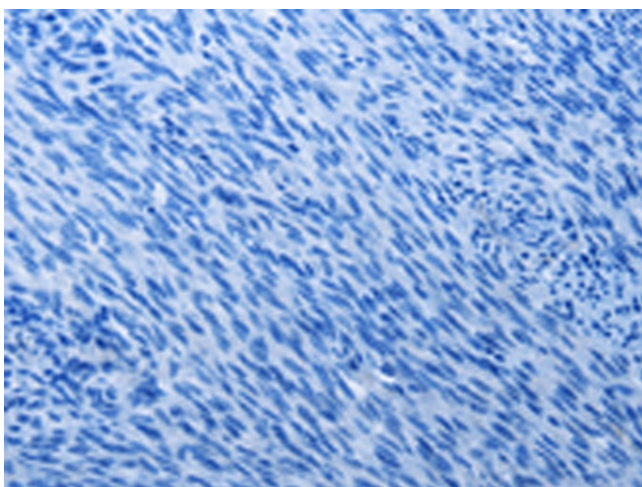
Product images:



Gel: 6%SDS-PAGE
Lysate: 40 µg
Lane: PC3 cells
Primary antibody: [TA350129] (LAMB3 Antibody) at dilution 1/200
Secondary antibody: Goat anti rabbit IgG at 1/8000 dilution
Exposure time: 20 seconds



Immunohistochemistry of paraffin-embedded Human sarcoma tissue using [TA350129] (LAMB3 Antibody) at dilution 1/40 (Original magnification: ×200)



Immunohistochemistry of paraffin-embedded Human sarcoma tissue using [TA350129] (LAMB3 Antibody) at dilution 1/40, treated with fusion protein. (Original magnification: $\times 200$)