

Product datasheet for **TA350121**

KLHL9 Rabbit Polyclonal Antibody

Product data:

Product Type:	Primary Antibodies
Applications:	WB
Recommended Dilution:	WB: 200-1000 WB positive control: Hela, SKOV3 and Jurkat cells
Reactivity:	Human, Mouse
Host:	Rabbit
Isotype:	IgG
Clonality:	Polyclonal
Immunogen:	Fusion protein of human KLHL9
Formulation:	pH7.4 PBS, 0.05% NaN ₃ , 40% Glycerol
Concentration:	lot specific
Purification:	Antigen affinity purification
Conjugation:	Unconjugated
Storage:	Store at -20°C as received.
Stability:	Stable for 12 months from date of receipt.
Predicted Protein Size:	69 kDa
Gene Name:	kelch like family member 9
Database Link:	NP_061335 Entrez Gene 242521 MouseEntrez Gene 55958 Human Q9P2J3

Background: The BTB (Broad-Complex, Tramtrack and Bric a brac) domain, also known as the POZ (Poxvirus and Zinc finger) domain, is an N-terminal homodimerization domain that contains multiple copies of kelch repeats and/or C2H2-type zinc fingers. Proteins that contain BTB domains are thought to be involved in transcriptional regulation via control of chromatin structure and function. KLHL9 (kelch-like 9) is a 617 amino acid protein containing one BACK (BTB/kelch associated) domain, six kelch repeats and a BTB/POZ domain. KLHL9 is believed to play a role in protein ubiquitination and may function as a substrate-specific adapters of an E3 ubiquitin-protein ligase complex with CUL-3.

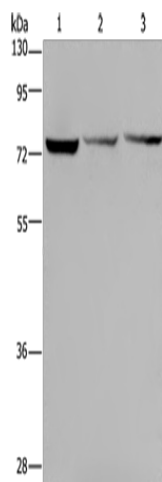


[View online »](#)

Synonyms: RP11-380P16.6

Protein Pathways: Ubiquitin mediated proteolysis

Product images:



Gel: 8%SDS-PAGE

Lysate: 40 µg

Lane 1-3: Hela cells

SKOV3 cells

Jurkat cells

Primary antibody: TA350121 (KLHL9 Antibody) at dilution 1/300

Secondary antibody: Goat anti rabbit IgG at 1/8000 dilution

Exposure time: 1 minute