

Product datasheet for **TA350120S**

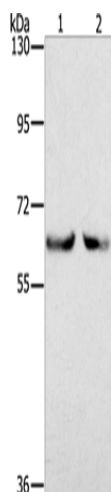
KLHL2 Rabbit Polyclonal Antibody

Product data:

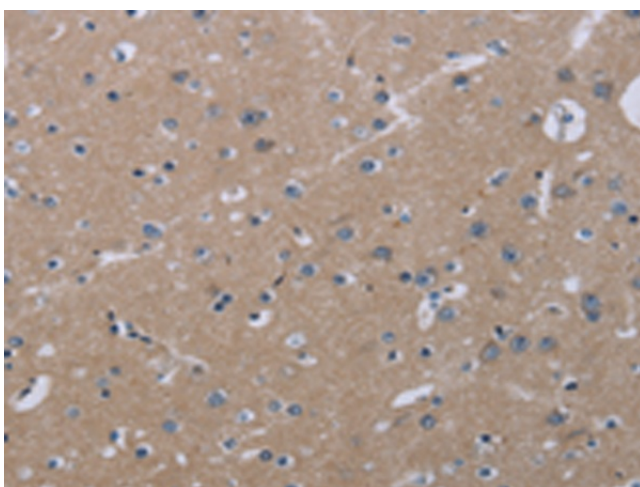
Product Type:	Primary Antibodies
Applications:	IHC, WB
Recommended Dilution:	WB: 200-1000 WB positive control: Jurkat and K562 cells IHC: 25-100 Positive control: Human brain Predicted cell location: Cytoplasm
Reactivity:	Human, Mouse, Rat
Host:	Rabbit
Isotype:	IgG
Clonality:	Polyclonal
Immunogen:	Fusion protein of human KLHL2
Formulation:	pH7.4 PBS, 0.05% NaN ₃ , 40% Glycerol
Purification:	Antigen affinity purification
Conjugation:	Unconjugated
Storage:	Store at -20°C as received.
Stability:	Stable for 12 months from date of receipt.
Predicted Protein Size:	66 kDa
Gene Name:	kelch like family member 2
Database Link:	NP_009177 Entrez Gene 77113 MouseEntrez Gene 290692 RatEntrez Gene 11275 Human O95198
Background:	KLHL2 (kelch-like protein 2), also known as actin-binding protein Mayven, is a 593 amino acid actin-binding protein. Highly expressed in brain, KLHL2 is thought to play a role in the organization of the actin cytoskeleton in brain cells.
Synonyms:	ABP-KELCH; MAV; MAYVEN



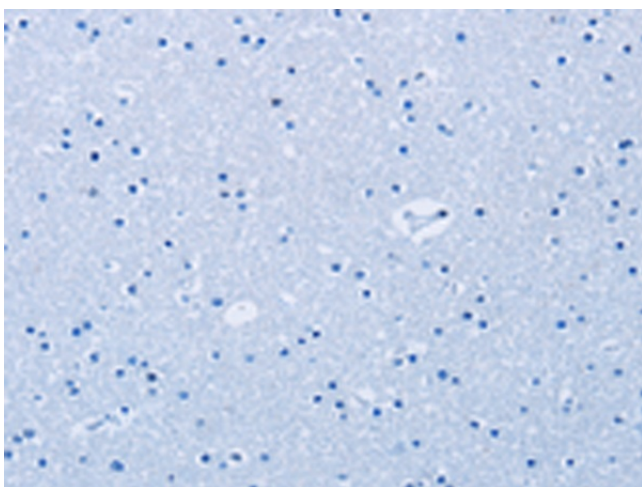
[View online »](#)

Product images:

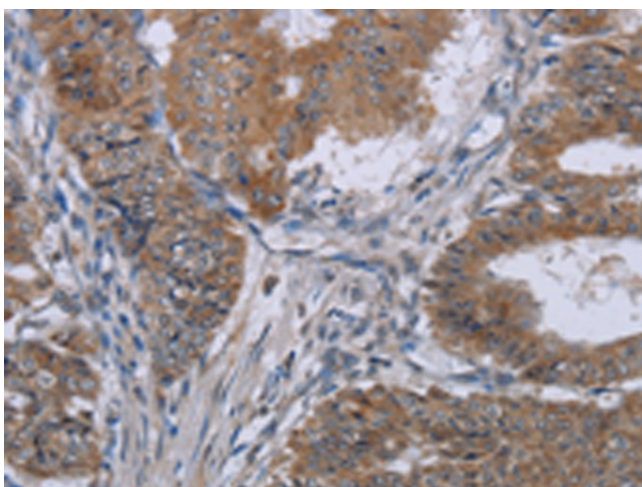
Gel: 6%SDS-PAGE
Lysate: 100 μ g
Lane 1-2: Jurkat cells
K562 cells
Primary antibody: [TA350120] (KLHL2 Antibody)
at dilution 1/200
Secondary antibody: Goat anti rabbit IgG at
1/8000 dilution
Exposure time: 2 minutes



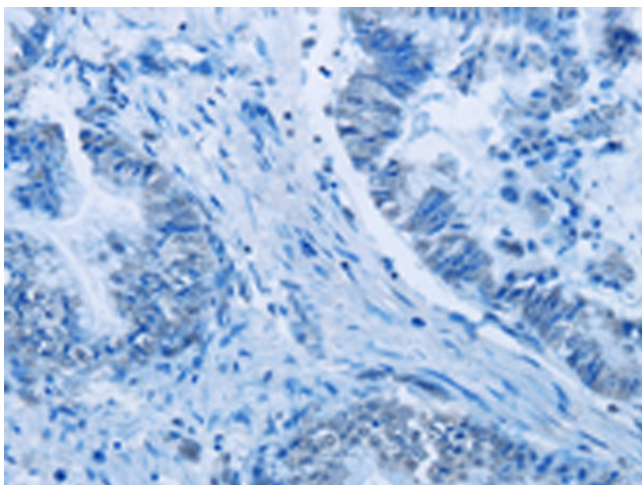
Immunohistochemistry of paraffin-embedded
Human brain tissue using [TA350120] (KLHL2
Antibody) at dilution 1/20 (Original magnification:
 \times 200)



Immunohistochemistry of paraffin-embedded Human brain tissue using [TA350120] (KLHL2 Antibody) at dilution 1/20, treated with fusion protein. (Original magnification: $\times 200$)



Immunohistochemistry of paraffin-embedded Human esophagus cancer tissue using [TA350120] (KLHL2 Antibody) at dilution 1/20 (Original magnification: $\times 200$)



Immunohistochemistry of paraffin-embedded Human esophagus cancer tissue using [TA350120] (KLHL2 Antibody) at dilution 1/20, treated with fusion protein. (Original magnification: $\times 200$)