

Product datasheet for **TA350120**

KLHL2 Rabbit Polyclonal Antibody

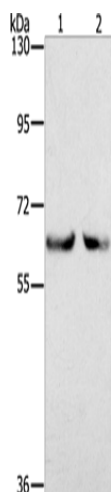
Product data:

Product Type:	Primary Antibodies
Applications:	IHC, WB
Recommended Dilution:	WB: 200-1000 WB positive control: Jurkat and K562 cells IHC: 25-100 Positive control: Human brain Predicted cell location: Cytoplasm
Reactivity:	Human, Mouse, Rat
Host:	Rabbit
Isotype:	IgG
Clonality:	Polyclonal
Immunogen:	Fusion protein of human KLHL2
Formulation:	pH7.4 PBS, 0.05% NaN ₃ , 40% Glycerol
Concentration:	lot specific
Purification:	Antigen affinity purification
Conjugation:	Unconjugated
Storage:	Store at -20°C as received.
Stability:	Stable for 12 months from date of receipt.
Predicted Protein Size:	66 kDa
Gene Name:	kelch like family member 2
Database Link:	NP_009177 Entrez Gene 77113 Mouse Entrez Gene 290692 Rat Entrez Gene 11275 Human O95198
Background:	KLHL2 (kelch-like protein 2), also known as actin-binding protein Mayven, is a 593 amino acid actin-binding protein. Highly expressed in brain, KLHL2 is thought to play a role in the organization of the actin cytoskeleton in brain cells.
Synonyms:	ABP-KELCH; MAV; MAYVEN



[View online »](#)

Product images:



Gel: 6%SDS-PAGE

Lysate: 100 μ g

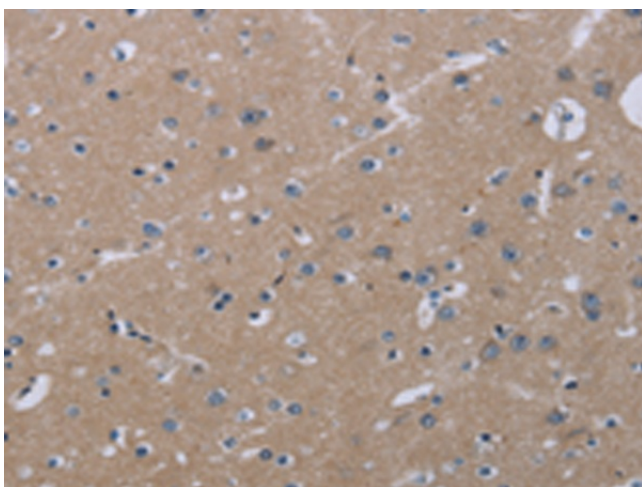
Lane 1-2: Jurkat cells

K562 cells

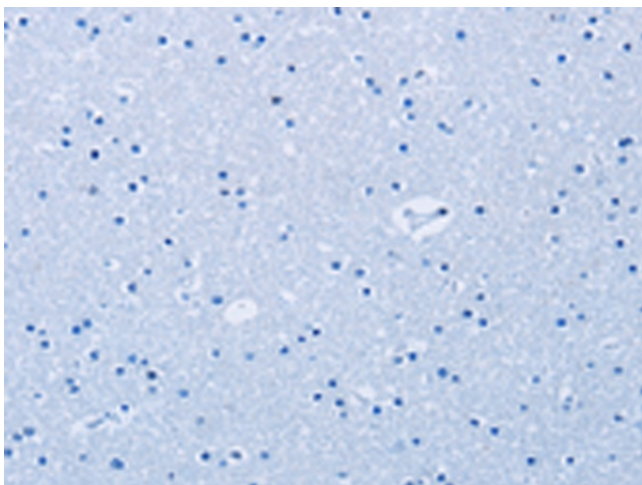
Primary antibody: TA350120 (KLHL2 Antibody) at dilution 1/200

Secondary antibody: Goat anti rabbit IgG at 1/8000 dilution

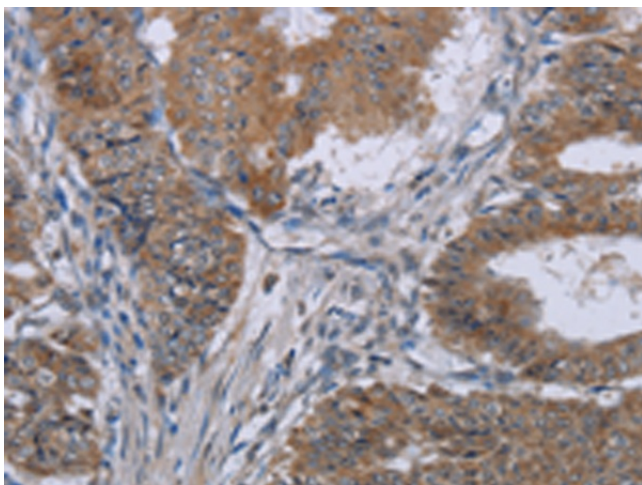
Exposure time: 2 minutes



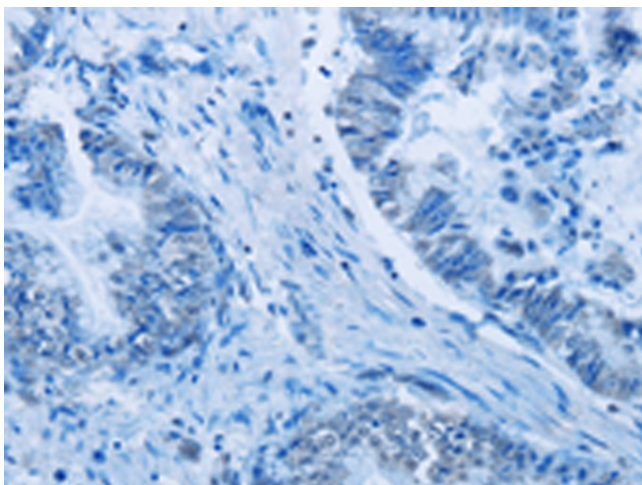
Immunohistochemistry of paraffin-embedded Human brain tissue using TA350120 (KLHL2 Antibody) at dilution 1/20 (Original magnification: \times 200)



Immunohistochemistry of paraffin-embedded Human brain tissue using TA350120 (KLHL2 Antibody) at dilution 1/20, treated with fusion protein. (Original magnification: x200)



Immunohistochemistry of paraffin-embedded Human esophagus cancer tissue using TA350120 (KLHL2 Antibody) at dilution 1/20 (Original magnification: x200)



Immunohistochemistry of paraffin-embedded Human esophagus cancer tissue using TA350120 (KLHL2 Antibody) at dilution 1/20, treated with fusion protein. (Original magnification: x200)