

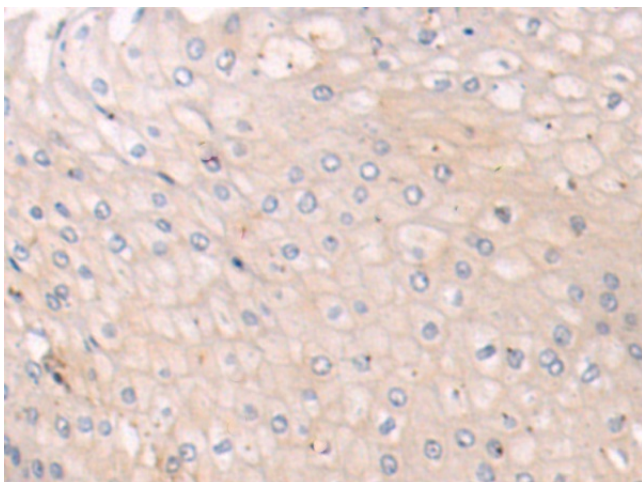
## Product datasheet for **TA350119S**

### KLHL1 Rabbit Polyclonal Antibody

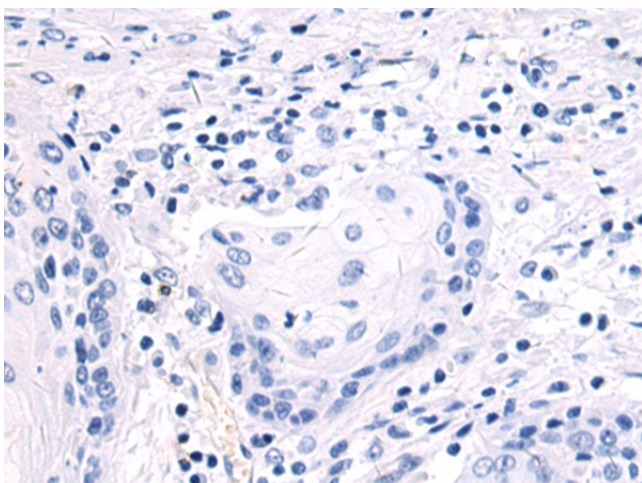
#### Product data:

Product Type:	Primary Antibodies
Applications:	IHC
Recommended Dilution:	IHC: 50-200 Positive control: Human esophagus cancer Predicted cell location: Cytoplasm
Reactivity:	Human, Mouse
Host:	Rabbit
Isotype:	IgG
Clonality:	Polyclonal
Immunogen:	Fusion protein of human KLHL1
Formulation:	pH7.4 PBS, 0.05% NaN <sub>3</sub> , 40% Glycerol
Purification:	Antigen affinity purification
Conjugation:	Unconjugated
Storage:	Store at -20°C as received.
Stability:	Stable for 12 months from date of receipt.
Gene Name:	kelch like family member 1
Database Link:	<a href="#">NP_065917</a> <a href="#">Entrez Gene 93688 Mouse</a> <a href="#">Entrez Gene 57626 Human</a> <a href="#">Q9NR64</a>
Background:	KLHL1 (kelch-like protein 1) is a 748 amino acid protein that is the homolog of the Drosophila kelch protein. Localized to the cytoskeleton, KLHL1 contains six kelch repeats and one BTB (POZ) domain. The BTB (Broad-Complex, Tramtrack and Bric a brac) domain, also known as the POZ (Poxvirus and Zinc finger) domain, is an N-terminal homodimerization domain that contains multiple copies of kelch repeats and/or C2H2-type zinc fingers.
Synonyms:	MRP2

[View online »](#)

**Product images:**


Immunohistochemistry of paraffin-embedded Human esophagus cancer tissue using [TA350119] (KLHL1 Antibody) at dilution 1/100 (Original magnification: ×200)



Immunohistochemistry of paraffin-embedded Human esophagus cancer tissue using [TA350119] (KLHL1 Antibody) at dilution 1/100, treated with fusion protein. (Original magnification: ×200)