

Product datasheet for **TA350118S**

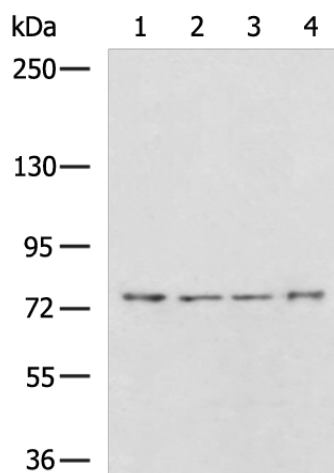
KLHL1 Rabbit Polyclonal Antibody

Product data:

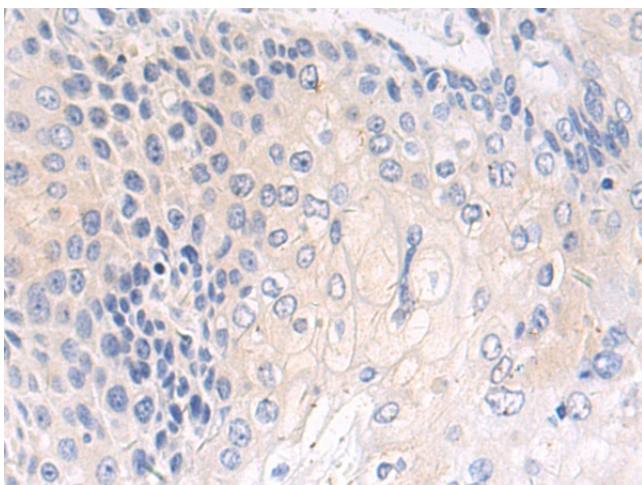
Product Type:	Primary Antibodies
Applications:	IHC, WB
Recommended Dilution:	WB: 200-1000 WB positive control: HepG2, 231, HeLa, NIH/3T3 cell lysates IHC: 50-100 Positive control: Human esophagus cancer Predicted cell location: Cytoplasm
Reactivity:	Human, Mouse
Host:	Rabbit
Isotype:	IgG
Clonality:	Polyclonal
Immunogen:	Fusion protein of human KLHL1
Formulation:	pH7.4 PBS, 0.05% NaN ₃ , 40% Glycerol
Purification:	Antigen affinity purification
Conjugation:	Unconjugated
Storage:	Store at -20°C as received.
Stability:	Stable for 12 months from date of receipt.
Predicted Protein Size:	83 kDa
Gene Name:	kelch like family member 1
Database Link:	NP_065917 Entrez Gene 93688 Mouse Entrez Gene 57626 Human Q9NR64
Background:	The KLHL1 protein belongs to a family of actin-organizing proteins related to Drosophila Kelch
Synonyms:	MRP2



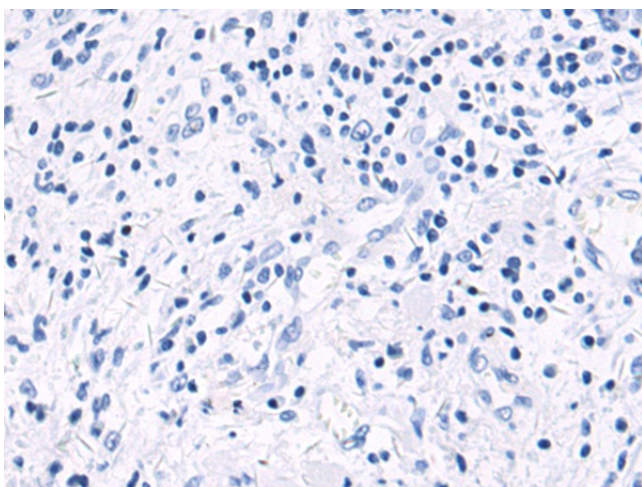
[View online »](#)

Product images:


Gel: 6%SDS-PAGE
 Lysate: 40 µg
 Lane 1-4: HepG2
 231
 HeLa
 NIH/3T3 cell lysates
 Primary antibody: [TA350118] (KLHL1 Antibody)
 at dilution 1/500
 Secondary antibody: Goat anti rabbit IgG at
 1/5000 dilution
 Exposure time: 5 minutes



Immunohistochemistry of paraffin-embedded
 Human esophagus cancer tissue using
 [TA350118] (KLHL1 Antibody) at dilution 1/60
 (Original magnification: ×200)



Immunohistochemistry of paraffin-embedded Human esophagus cancer tissue using [TA350118] (KLHL1 Antibody) at dilution 1/60, treated with fusion protein. (Original magnification: ×200)